



**HAL**  
open science

## **Bombali Ebolavirus in Mops condylurus Bats (Molossidae), Mozambique**

Camille Lebarbenchon, Steven M Goodman, Axel O G Hoarau, Gildas Le Minter, Andréa dos Santos, M Corrie Schoeman, Christophe Léculier, Hervé Raoul, Eduardo S Gudo, Patrick Mavingui

► **To cite this version:**

Camille Lebarbenchon, Steven M Goodman, Axel O G Hoarau, Gildas Le Minter, Andréa dos Santos, et al.. Bombali Ebolavirus in Mops condylurus Bats (Molossidae), Mozambique. *Emerging Infectious Diseases*, 2022, 28 (12), pp.2583 - 2585. 10.3201/eid2812.220853 . hal-04095238

**HAL Id: hal-04095238**

**<https://hal.univ-reunion.fr/hal-04095238>**

Submitted on 11 May 2023

**HAL** is a multi-disciplinary open access archive for the deposit and dissemination of scientific research documents, whether they are published or not. The documents may come from teaching and research institutions in France or abroad, or from public or private research centers.

L'archive ouverte pluridisciplinaire **HAL**, est destinée au dépôt et à la diffusion de documents scientifiques de niveau recherche, publiés ou non, émanant des établissements d'enseignement et de recherche français ou étrangers, des laboratoires publics ou privés.

## Bombali Ebolavirus in *Mops condylurus* Bats (Molossidae), Mozambique

Camille Lebarbenchon, Steven M. Goodman, Axel O.G. Hoarau, Gildas Le Minter, Andréa Dos Santos, M. Corrie Schoeman, Christophe Léculier, Hervé Raoul, Eduardo S. Gudo, Patrick Mavingui

Author affiliations: Processus Infectieux en Milieu Insulaire Tropical, University of Reunion, Inserm, CNRS, IRD, Saint-Denis, Reunion Island, France (C. Lebarbenchon, A.O.G. Hoarau, G. Le Minter, P. Mavingui); Field Museum of Natural History, Chicago, USA S.M. Goodman); Association Vahatra, Antananarivo, Madagascar (S.M. Goodman); Eduardo Mondlane University, Maputo, Mozambique (A. Dos Santos); University of Kwa-Zulu Natal, Kwa-Zulu Natal, South Africa (M.C. Schoeman); Jean Mérieux Inserm P4 Laboratory, Lyon, France (C. Léculier, H. Raoul); National Institute of Health, Maputo, Mozambique (E.S. Gudo)

DOI: <https://doi.org/10.3201/eid2812.220853>

We detected Bombali ebolavirus RNA in 3 free-tailed bats (*Mops condylurus*, Molossidae) in Mozambique. Sequencing of the large protein gene revealed 98% identity with viruses previously detected in Sierra Leone, Kenya, and Guinea. Our findings further support the suspected role of *Mops condylurus* bats in maintaining Bombali ebolavirus.

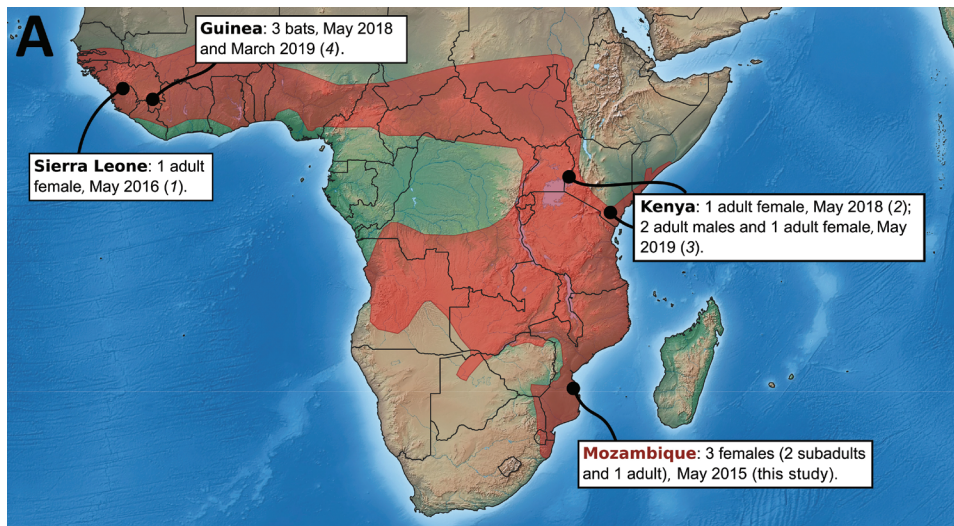
Six viruses of the genus *Ebolavirus* have been documented to date (Zaire, Sudan, Bundibugyo, Taï Forest, Reston, and Bombali), and some have caused outbreaks in Africa, resulting in high human fatality rates. Bombali virus (BOMV) was first identified in free-tailed bats of the family Molossidae, specifically the species *Mops condylurus* and *Chaerephon pumilus*, in 2016 in the Bombali District in Sierra Leone (1). This virus was later detected in *M. condylurus* bats in Kenya (2,3) in 2018 and in Guinea (4) in 2019 (Figure, panel A). Human infections have not been documented, including in patients with febrile illness symptoms in areas where BOMV has been found in bats (2).

We detected BOMV RNA in 3 *M. condylurus* bats (all female) captured in Mozambique in the southeastern portion of this species' geographic range (Figure, panel A). In May 2015, we obtained samples from 54 *M. condylurus* bats residing in buildings in the Inhassoro District of southeastern Mozambique and from 211 other bats (representing 10 species), mostly from caves (Appendix, <https://wwwnc.cdc.gov/EID/article/28/12/22-0853-App1.pdf>). We screened all

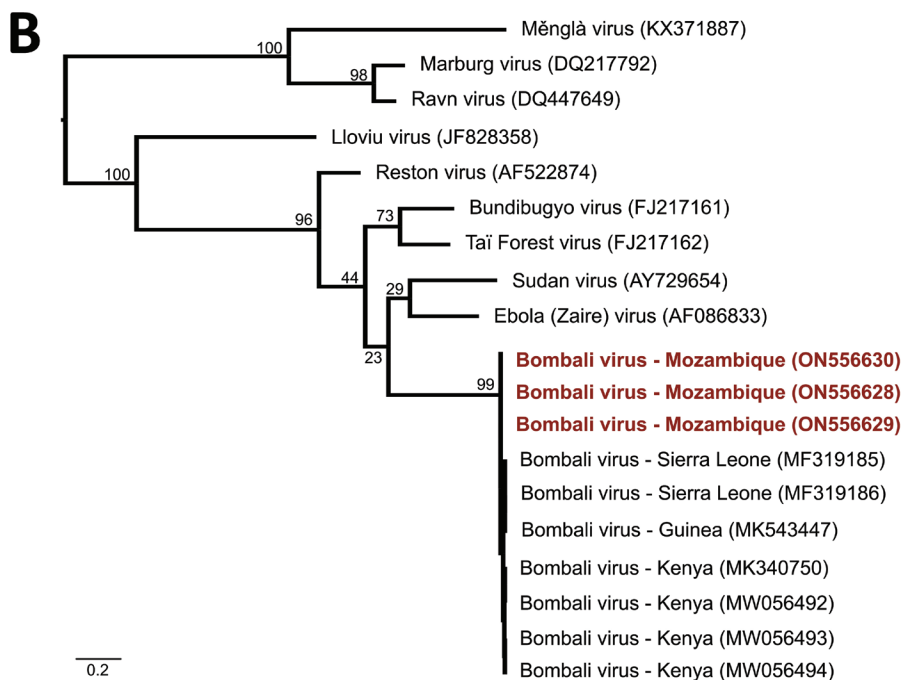
samples for viruses belonging to the families *Astroviridae* (5), *Coronaviridae* (6), and *Paramyxoviridae* (7). We performed RNA extraction with the QIAamp Viral RNA Mini Kit (QIAGEN, <https://www.qiagen.com>) and reverse transcription with the ProtoScript II Reverse Transcriptase and Random Primer 6 (New England BioLabs, <https://www.neb.com>). We screened complementary DNA with 3 assays targeting the large (L) protein gene of Filoviridae (Appendix) and submitted PCR products of the expected size for direct Sanger sequencing (GenoScreen, <https://www.genoscreen.fr>). We did not attempt virus isolation in this study. We processed samples in a Biosafety Level 3 laboratory at the University of Reunion (Saint-Denis, Reunion Island, France) and transferred original samples to the Biosafety Level 4 laboratory at Inserm Jean Mérieux (Lyon, France).

To date, BOMV is the only ebolavirus that has been recurrently detected by PCR, across multiple years (2015–2019), and in bat populations located >5,000 km apart (1–4). Our study provides support for BOMV in the southern range of where *M. condylurus* bats are known to reside (Figure, panel A). Partial sequencing of the L protein gene revealed that the BOMV sequences detected in bats from Mozambique were closely related to those sequences reported in bats from Sierra Leone, Kenya, and Guinea (Figure, panel B). Although our findings are based on short sequences (587 bp), this finding could suggest a strong association between BOMV and *M. condylurus* bats across their geographic range.

BOMV epidemiology in *M. condylurus* bats is unknown. Seasonal variation of environmental conditions and population structure are important drivers for the transmission dynamics of infectious agents in natural systems (8). For instance, pulses of Marburg virus, paramyxovirus, and coronavirus shedding have been shown to coincide with a seasonal increase of juveniles in bat populations (9,10). Although our study was based on a limited sampling, we detected BOMV only in female bats ( $\chi^2 = 4.6$ ;  $df = 1$ ;  $p < 0.05$ ; no. tested females/males: 26/28) and did not find differences between adults and subadults ( $\chi^2 = 0.5$ ;  $df = 1$ ;  $p = 0.46$ ; no. tested adults/subadults: 29/25). Previous reports likewise reported BOMV more frequently in female bats (Figure, panel A) (1–3). All prior studies reported BOMV-positive bats during the month of May (Figure, panel A) (1–4). Whether these observations reflect a biologic phenomenon remains to be tested. Across their geographic range, female *M. condylurus* bats usually have 2 birthing periods that occur between September and early May, and some variation in virus shedding can be anticipated with



**Figure.** Bombali virus detection in Angolan free-tailed bats (*Mops condylurus*). A) Geographic range highlighted in red. Information regarding the sex of positive *M. condylurus* bats in Guinea is not available (4). The map was generated with data available from Natural Earth (<https://www.naturalearthdata.com>) and the International Union for Conservation of Nature Red List Web site (<https://www.iucnredlist.org>). B) Maximum-likelihood tree based on partial nucleotide sequences (587 bp) of the large protein gene of selected filoviruses. Red indicates sequences generated in this study. The phylogenetic analysis was conducted with the transversion plus gamma evolutionary model ( $\alpha = 0.32$ ) and 1,000 bootstraps (Appendix, <https://wwwnc.cdc.gov/EID/article/28/12/22-0853-App1.pdf>). All but 1 of the Bombali virus were detected in *Mops condylurus* bats, with the exception of MF319186, which collected from a *Chaerephon pumilus* bat (1).



each reproductive cycle, as documented for other bat-virus systems. Longitudinal studies are needed to investigate biologic and ecologic factors involved in the transmission dynamics of BOMV in *M. condylurus* bats but also to fully assess virus spillover risk to other hosts, including humans.

In Mozambique, neither BOMV nor other species of ebolavirus have been detected in humans, highlighting that our findings should not be considered evidence of a major threat to local communities, but should be instead considered a catalyst for further investigation and surveillance. Additional studies should focus on other Molossidae bats, because BOMV was initially reported in another member of

the family, *Chaerephon pumilus* (1), and these bats commonly roost in synanthropic settings and therefore generate opportunities for spillover. Indeed, most BOMV-positive bats were captured in day-roost sites in buildings occupied by humans or livestock (1,3,4). Assessing livestock exposure to BOMV also would be prudent, given their key role as intermediate hosts in the emergence of zoonotic viruses.

The discovery of ebolavirus in wild animals raises questions regarding virus spillover and epidemic potential. In addition to the identification of molecular factors involved in the ability of the virus to replicate in human cells, risk assessment should include environmental factors across the local, social,

and habitat landscape. Employing a One Health approach (i.e., collaborative, multisectoral, and transdisciplinary) might prevent future outbreaks, promote sustainable development of human communities, and offer protection for bats that play a key functional role in ecosystems.

### Acknowledgments

We thank K. Dellagi and H. Pascalis for developing and managing the program “Partenariat Mozambique-Réunion dans la recherche en santé: pour une approche intégrée d’étude des maladies infectieuses à risque épidémique (MoZaR),” funded by the “Fond Européen de Développement Régional, Programme Opérationnel de Coopération Territoriale 2015,” and during which the samples reported herein were collected.

Molecular analyses were financially supported by the UMR Processus Infectieux en Milieu Insulaire Tropical (University of Reunion, CNRS 9192, Inserm 1187, IRD 249). C.L. was supported by a “Chaire Mixte Inserm-Université de La Réunion” and A.O.G.H. by a “Ministère de l’Enseignement supérieur, de la Recherche et de l’Innovation” PhD fellowship.

### About the Author

Dr. Lebarbenchon is an associate professor at the University of La Réunion–National Institute of Health and Medical Research. His research focuses on the ecology and evolution of emerging viruses in bats and wild birds on tropical islands.

### References

1. Goldstein T, Anthony SJ, Gbakima A, Bird BH, Bangura J, Tremeau-Bravard A, et al. The discovery of Bombali virus adds further support for bats as hosts of ebolaviruses. *Nat Microbiol.* 2018;3:1084–9. <https://doi.org/10.1038/s41564-018-0227-2>
2. Forbes KM, Webala PW, Jääskeläinen AJ, Abdurahman S, Ogola J, Masika MM, et al. Bombali Virus in *Mops condylurus* bat, Kenya. *Emerg Infect Dis.* 2019;25:955–7. <https://doi.org/10.3201/eid2505.181666>
3. Kareinen L, Ogola J, Kivistö I, Smura T, Aaltonen K, Jääskeläinen AJ, et al. Range expansion of Bombali virus in *Mops condylurus* bats, Kenya, 2019. *Emerg Infect Dis.* 2020;26:3007–10. <https://doi.org/10.3201/eid2612.202925>
4. Karan LS, Makenov MT, Korneev MG, Sacko N, Boumbaly S, Yakovlev SA, et al. Bombali virus in *Mops condylurus* bats, Guinea. *Emerg Infect Dis.* 2019;25:1774–5. <https://doi.org/10.3201/eid2509.190581>
5. Hoarau F, Le Minter G, Joffrin L, Schoeman MC, Lagadec E, Ramasindrazana B, et al. Bat astrovirus in Mozambique. *Virology.* 2018;15:104. <https://doi.org/10.1186/s12985-018-1011-x>
6. Joffrin L, Goodman SM, Wilkinson DA, Ramasindrazana B, Lagadec E, Gomard Y, et al. Bat coronavirus phylogeography in the Western Indian Ocean. *Sci Rep.* 2020;10:6873. <https://doi.org/10.1038/s41598-020-63799-7>
7. Hoarau AOG, Goodman SM, Al Halabi D, Ramasindrazana B, Lagadec E, Le Minter G, et al. Investigation of astrovirus, coronavirus and paramyxovirus co-infections in bats in the western Indian Ocean. *Virology.* 2021;18:205. <https://doi.org/10.1186/s12985-021-01673-2>
8. Altizer S, Dobson A, Hosseini P, Hudson P, Pascual M, Rohani P. Seasonality and the dynamics of infectious diseases. *Ecol Lett.* 2006;9:467–84. <https://doi.org/10.1111/j.1461-0248.2005.00879.x>
9. Amman BR, Carroll SA, Reed ZD, Sealy TK, Balinandi S, Swanepoel R, et al. Seasonal pulses of Marburg virus circulation in juvenile *Rousettus aegyptiacus* bats coincide with periods of increased risk of human infection. *PLoS Pathog.* 2012;8:e1002877. <https://doi.org/10.1371/journal.ppat.1002877>
10. Joffrin L, Hoarau AOG, Lagadec E, Torrontegi O, Köster M, Le Minter G, et al. Seasonality of coronavirus shedding in tropical bats. *R Soc Open Sci.* 2022;9:211600. <https://doi.org/10.1098/rsos.211600>

Address for correspondence: Camille Lebarbenchon or Patrick Mavingui, UMR Processus Infectieux en Milieu Insulaire Tropical (PIMIT; Université de La Réunion, CNRS, Inserm, IRD), GIP CYROI, 2 Rue Maxime Rivière, 97400 Saint-Denis, La Réunion, France; emails: [camille.lebarbenchon@univ-reunion.fr](mailto:camille.lebarbenchon@univ-reunion.fr) or [patrick.mavingui@cnrs.fr](mailto:patrick.mavingui@cnrs.fr)