



HAL
open science

Deciphering SARS-CoV-2 Virologic and Immunologic Features

Grégoire Lebeau, Damien Vagner, Étienne Frumence, Franck Ah-Pine, Xavier X. Guillot, Estelle Nobécourt, Loïc Raffray, Philippe Gasque

► **To cite this version:**

Grégoire Lebeau, Damien Vagner, Étienne Frumence, Franck Ah-Pine, Xavier X. Guillot, et al.. Deciphering SARS-CoV-2 Virologic and Immunologic Features. International Journal of Molecular Sciences, 2020, 21 (16), pp.5932. 10.3390/ijms21165932 . hal-03066442

HAL Id: hal-03066442

<https://hal.univ-reunion.fr/hal-03066442v1>

Submitted on 15 Dec 2020

HAL is a multi-disciplinary open access archive for the deposit and dissemination of scientific research documents, whether they are published or not. The documents may come from teaching and research institutions in France or abroad, or from public or private research centers.

L'archive ouverte pluridisciplinaire **HAL**, est destinée au dépôt et à la diffusion de documents scientifiques de niveau recherche, publiés ou non, émanant des établissements d'enseignement et de recherche français ou étrangers, des laboratoires publics ou privés.



Distributed under a Creative Commons Attribution 4.0 International License



Review

Deciphering SARS-CoV-2 Virologic and Immunologic Features

Grégoire Lebeau ^{1,2,*}, Damien Vagner ^{1,3,†}, Étienne Frumence ^{1,2}, Franck Ah-Pine ⁴,
Xavier Guillot ^{1,5}, Estelle Nobécourt ^{6,7}, Loïc Raffray ⁸ and Philippe Gasque ^{1,2}

- ¹ Unité de Recherche Études Pharmaco-Immunologiques, Centre Hospitalier Universitaire La Réunion Site Félix Guyon, CS11021, 97400 Saint Denis de La Réunion, France; damien.vag@gmail.com (D.V.); etienne.frum@gmail.com (É.F.); xavier.guillot@chu-reunion.fr (X.G.); Philippe.gasque@chu-reunion.fr (P.G.)
 - ² Laboratoire de Biologie, Secteur Laboratoire d'immunologie Clinique et Expérimentale de la Zone de l'Océan Indien (LICE-OI), Centre Hospitalier Universitaire La Réunion Site Félix Guyon, CS11021, 97400 Saint Denis de La Réunion, France
 - ³ Unité Mixte de Recherche Processus Infectieux en Milieu Insulaire Tropical (PIMIT), Université de La Réunion, INSERM UMR 1187, CNRS 9192, IRD 249, Platform CYROI, 2 rue Maxime Rivière, 97491 Sainte Clotilde, La Réunion, France
 - ⁴ Service d'anatomo-Pathologie, Centre Hospitalier Universitaire Sud Réunion, 97410 Saint Pierre, France; franck.ahpine@gmail.com
 - ⁵ Service de Rhumatologie, Centre Hospitalier Universitaire La Réunion Site Félix Guyon, CS11021, 97400 Saint Denis de La Réunion, France
 - ⁶ Service d'endocrinologie Diabétologie, Centre Hospitalier Universitaire Sud Réunion, 97410 Saint Pierre, France; estelle.nobecourt@chu-reunion.fr
 - ⁷ Université de Formation et de Recherche Santé, Université de la Réunion, 97400 Saint-Denis, France
 - ⁸ Service de Médecine Interne, Centre Hospitalier Universitaire La Réunion Site Félix Guyon, CS11021, 97400 Saint Denis de La Réunion, France; loic.raffray@chu-reunion.fr
- * Correspondence: greg.lebeau@live.fr; Tel.: +262-692-55-05-83
† Both authors contributed equally to this work.

Received: 19 June 2020; Accepted: 14 August 2020; Published: 18 August 2020



Abstract: Severe acute respiratory syndrome coronavirus (SARS-CoV)-2 and its associated pathology, COVID-19, have been of particular concerns these last months due to the worldwide burden they represent. The number of cases requiring intensive care being the critical point in this epidemic, a better understanding of the pathophysiology leading to these severe cases is urgently needed. Tissue lesions can be caused by the pathogen or can be driven by an overwhelmed immune response. Focusing on SARS-CoV-2, we and others have observed that this virus can trigger indeed an immune response that can be dysregulated in severe patients and leading to further injury to multiple organs. The purpose of the review is to bring to light the current knowledge about SARS-CoV-2 virologic and immunologic features. Thus, we address virus biology, life cycle, tropism for many organs and how ultimately it will affect several host biological and physiological functions, notably the immune response. Given that therapeutic avenues are now highly warranted, we also discuss the immunotherapies available to manage the infection and the clinical outcomes.

Keywords: SARS-CoV-2; COVID-19; virus biology; immunopathology; immunotherapy

1. Introduction

A series of coronaviruses crossed the species barrier, with the severe acute respiratory syndrome coronavirus (SARS-CoV) in 2003 and the Middle East respiratory syndrome coronavirus (MERS-CoV) in 2012, and they caused major outbreaks of lethal pneumonia. Now, a new coronavirus emerged in

December 2019 in Hubei province and was named the severe acute respiratory syndrome coronavirus 2 (SARS-CoV-2) virus. The disease caused by this virus, called COVID-19 has spread worldwide causing as early as August 2020 more than 18 million cases and more than 700,000 deaths [1].

SARS-CoV-2 is an enveloped virus with a positive RNA genome belonging to the beta genus of the Coronaviridae family [2].

The clinical features of COVID-19 range from asymptomatic or mild disease to critically life-threatening ill patients conditions. The most prevalent symptoms are fever, shortness of breath, dyspnea, cough and fatigue [3] and are commonly associated with diarrhea, headache, anosmia, lymphopenia or liver injury. An increasing number of less common manifestations are being described like acute kidney injury, vasculitis or myocarditis [4]. The most common comorbidities in critically ill patients are age, hypertension, diabetes, obesity, cardiovascular disease and respiratory system disease [3].

Viral and host interaction plays a key role in the pathogenesis of the disease. With the pandemic diffusion, better knowledge of the viral life cycle, cell tropism and host immune response is needed to find treatment against the disease. Here, we review the current understanding of the viral cycle, immunopathology as well as the current progress of immunotherapy.

2. Viral Description

2.1. Unravelling SARS-CoV-2 Genome and Viral Protein Features

SARS-CoV-2 (previously named new coronavirus 2019, nCoV-2019) is a single-stranded positive RNA virus, classified among the family Coronaviridae, within the Nidovirales order [2]. More precisely, SARS-CoV-2 belongs to the subgenus Sarbecovirus, within the *Betacoronavirus* genera and the subfamily Orthocoronavirinae [5,6]. Like other coronaviruses, SARS-CoV-2 was shown to possess a long genome, near to 30 kb, which showed 80% similarity with SARS-CoV, 50% with MERS-CoV and more identity with bat related coronaviruses (88% with bat-SL-CoVZC45 and bat-SL-CoVZXC21, 93% with RaTGT13) [6–9]. The first 2/3 parts of the genome encode the replicase–transcriptase complex, and the last third of the genome the four structural proteins [5,8,9]. Among all viral proteins, the replicase–transcriptase complex is the only one directly translated from the genome. ORF1a and ORF1b encode for two polyproteins (pp1a and pp1b) autoproteolytically processed to give the 16 non-structural proteins [5,10]. Whereas the structural proteins spike (S), envelope (E), membrane (M), nucleocapsid (N) and other accessory ones are expressed from subgenomic mRNAs [5,10].

The SARS-CoV-2 virion has a diameter of approximately 125 nm. The virion surface mainly bears the M protein and is poor in the E protein, however this last one is crucial for intracellular membrane assembly [5,11–13]. Moreover, the virion surface presents the spike protein (S), a highly glycosylated petal-shaped protein, composed of two functional domains S1 and S2 responsible for binding to the host cell receptor and membrane fusion respectively. The long genome is associated with helically symmetric N protein to form a nucleoprotein (NP), enclosed in the virion envelope. As SARS-CoV-2 has been recently identified, little is known about a large part of its proteins (structural and non-structural). However, growing efforts are made for this purpose. The SARS-CoV-2 spike protein is one of the most described, as it is the one that gives its infectivity to the virus. Spikeless coronaviruses exert poor infectivity [5]. Hence, this protein is essential for viral entry, as it binds to Angiotensin Converting Enzyme II—ACE2 as an entry receptor on the host cell, through its receptor-binding domain (RBD) located in the S1 subunit [14]. This system of entry is shared with SARS-CoV [15–18]. Additionally, this S protein is one of the major antigens [5], against whom is directed the neutralizing antibodies [14,19]. Notably a highly conserved epitope has been identified [20], which may explain cross-neutralization by SARS-CoV S-specific antibodies [14,17,19].

Of note, near-atomic structure of SARS-CoV-2 nsp12-nsp7-nsp8 complex (respectively catalytic subunit and two cofactors), representing the core polymerase complex, has been described and highly resembles SARS-CoV. Additionally, this gives insights about a better adaptation to the human host

than SARS-CoV polymerase [21], maybe explaining the increased ribonucleic acid (RNA) production compared to SARS-CoV [22]. Finally, the SARS-CoV-2 main protease (Mpro) X-ray structure has also been reported [23]. Among the viral proteins that we presented, some are potential targets for novel drug development or drug repurposing, with already established lead compounds, notably due to computational methods [18,23,24]. The antiviral activity and clinical benefits of these compounds need to be investigated.

2.2. Inside the SARS-CoV-2V Life Cycle

2.2.1. Entry and Fusion

SARS-CoV-2 is an airborne virus, meaning that it can be transmitted through droplets or contacts. Subsequently, the virus enters its target. Different roads of entry have been identified (Figure 1A). First, the most described, as aforementioned passes through ACE2 due to the RBD of the S protein [15–17]. This entry also implies the cleavage of the S protein, by the transmembrane protease serine 2 (TMPRSS2), which allows it to release the fusion peptide contained into the S2 domain and largely increases SARS-CoV-2 entry, similarly to what was shown for SARS-CoV [14–16]. Alternatively, a cleavage by the cathepsin L during endocytosis is also possible. Interestingly, unlike the classical cleavage site known in the SARS-CoV S protein, SARS-CoV-2 S presents a furin-like cleavage site, often observed in highly virulent influenza viruses. This may permit cleavage in the Golgi apparatus during biosynthesis (the global structure still maintained by non-covalent bonds) and extend tropism and transmissibility, due to the near-ubiquitous expression of furin-like protease [14]. An abundance of literature demonstrated ACE2/RBD binding, but recently, a new route of entry has been evoked via CD147 (Basigin) and needs to be further explored [25], as these results are still questionable.

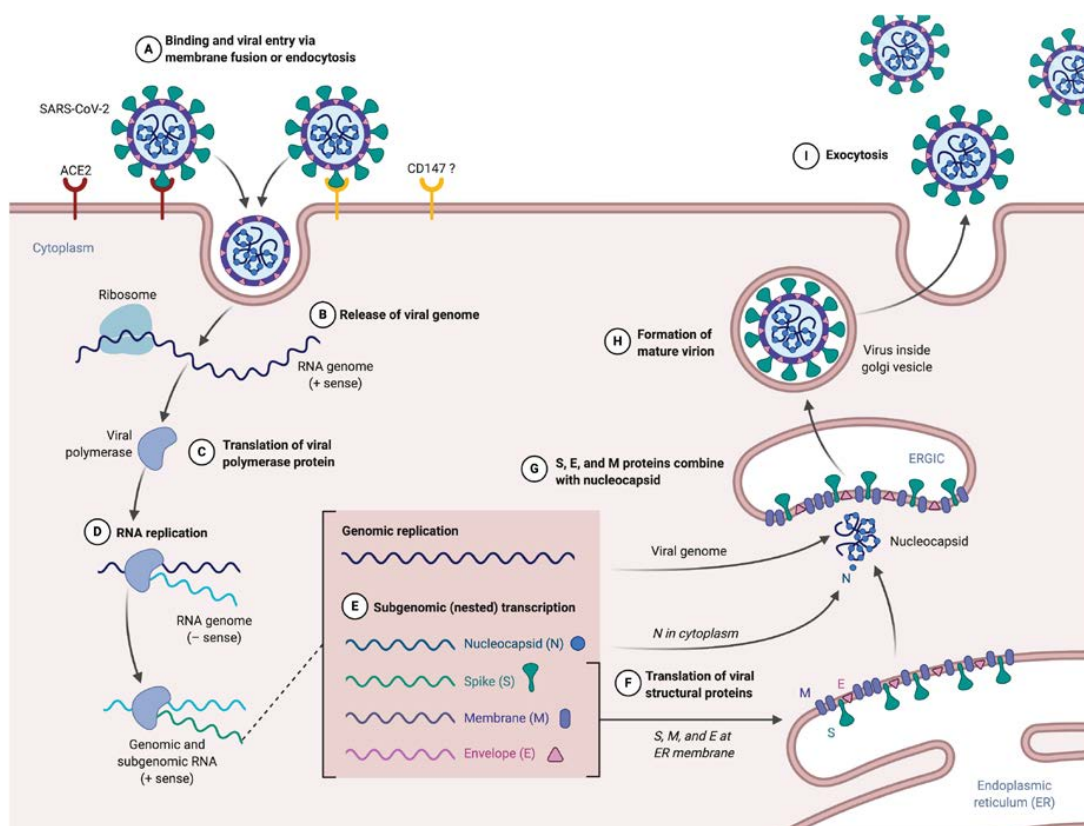


Figure 1. SARS-CoV-2 supposed life cycle. (A) Entry of SARS-CoV-2 in target cell expressing ACE2 (or another receptor, CD147 have been evoked but need to be confirmed). (B) Uncoating and releasing

SARS-CoV-2 single stranded positive RNA genome. (C) Translation of replicase–transcriptase complex directly from RNA genome. (D) RNA genome replication due to a negative template. (E) Nested production of subgenomic RNA encoding for structural proteins. (F) Translation of viral S, E and M inserted in endoplasmic reticulum. (G) Nucleocapsid coupled to the genome, forming nucleoprotein, combine to S, E and M to form a mature virion (H). (I) Exocytosis of SARS-CoV-2.

2.2.2. Release and Replication

The process of entry and fusion lead to virion contents (i.e., nucleocapsid) release inside the targeted cell (Figure 1B). The next step in the viral cycle is the replicase–transcriptase complex translation directly from the genomic RNA (Figure 1C), a process requiring ribosomal frameshifting [10,26]. The encoded polyprotein, as said earlier, is processed to give 16 nsp, which assemble to form the replicase–transcriptase complex. In coronaviruses, this complex exerts the particularity to be associated with remodeled cellular membranes, only dedicated to welcome viral RNA synthesis [27,28], representing a mean of immune evasion. Afterwards, negative-sense RNA intermediates are generated to serve as templates for the synthesis of genomic RNA on the one hand, and subgenomic RNA on the other hand that will encode structural proteins and several accessory proteins (Figure 1E) [29].

2.2.3. Assembly

After translation, M, S and E proteins are inserted in the endoplasmic reticulum (ER) membrane (Figure 1F). From this location, they are transported, through a secretion pathway, to the site of assembly: the endoplasmic reticulum–Golgi intermediate compartment (ERGIC) [10,30]. Assembly requires a complex cooperation between the M protein and other structural proteins, notably the E protein, which is essential for assembly [5,10,30,31]. N protein complexes with newly synthesized genomic RNA in cytoplasm to form NP, which then reaches the ERGIC to which achieves progeny viral formation by condensation of NP with the envelope components (Figure 1G). Conversely to what is known for entry and fusion of SARS-CoV-2, few data are available at this time about other steps of the viral life cycle. Hence experiments are highly awaited to address the direct cytopathic effects of the SARS-CoV-2 replicative cycle on cells that support infection [32,33]. Of note immune-induced tissue injuries need to be taken into consideration and these will be discussed largely below.

2.2.4. Budding and Transmission

Finally, the last step of the virus life cycle is virion exocytosis (Figure 1I). Virus budding appears to be done near the Golgi apparatus, presumably into smooth membranes of ERGIC [28]. This leads to two phenomena: transmission and viral spreading in other organs. Transmission is mainly described by person-to-person airborne transmission, via droplets or contact [34–36]. However, other routes of transmission are supposed (such as orofecal or ocular), as the virus can be found in the digestive tract [37,38] and ocular surface express ACE2 [39].

Even if data might be extrapolated from what is known from other coronaviruses, going forward remains crucial to confirm them with a cellular model of infection.

2.3. Tropism and Associated Clinical Manifestations

As we have seen, SARS-CoV-2 is mainly supposed to enter via a principal surface protein ACE2 (and maybe other entry receptors/co-receptors such as CD147) and fuse via TMPRSS2 or furin (Figure 2). These proteins are expressed on several cell types and tissues, explaining the multiple organ injuries that can be observed in SARS-CoV-2 infection.

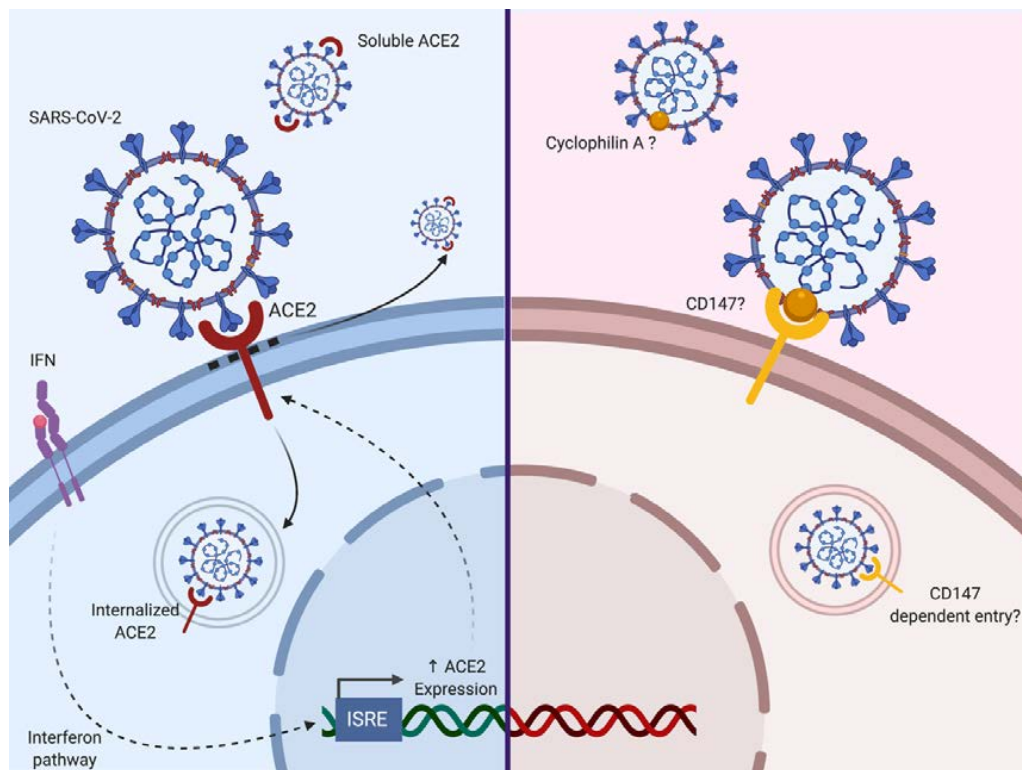


Figure 2. The two evoked routes of entry for SARS-CoV-2 to date. Angiotensin-converting-enzyme 2 (ACE2), which has been described as an interferon-stimulated gene (ISG), is a route of entry for SARS-CoV-2. Additionally, CD147 is evoked as a potential second route of entry. Based on a previous study with SARS-CoV, an interaction with Cyclophilin A is possible. The blue background corresponds to cells expressing ACE2, whereas the red background is representing cells expressing CD147. Solid arrows correspond to a direct activity involving ACE2, dotted arrows correspond to an indirect promoting activity.

ACE2 is a carboxypeptidase responsible for the conversion of angiotensin II (a potent vasoconstrictor) to angiotensin (1–7; a vasodilator). ACE2 is expressed in the nose, lung, ileum, heart, eye, liver, bladder, kidney, pancreas, brain, prostate, testis and placenta [40–42]. Following binding of the SARS-CoV-2 S protein, ACE2 activity and its surface expression are decreased. Thus, the loss of ACE2 expression on the cell surface may create an unbalance in the renin–angiotensin system, resulting in reduced metabolism of angiotensin II and leaky pulmonary blood vessels associated with severe acute lung injury through Angiotensin II Type 1a receptor stimulation (AT1R) [43,44]. Additionally, it has been shown that the injection of recombinant SARS-CoV S protein itself in acid aspiration-induced acute lung injury in the mouse is sufficient to boost lung failure [43]. It may be that similar effects of SARS-CoV-2 S protein could be envisaged. It has been shown that SARS-CoV binding to ACE2 could lead to ACE2 shedding as a soluble form by ADAM17, also known as a tumor necrosis factor alpha (TNF- α) converting enzyme [45–48]. Inflammatory cytokines such as TNF- α could enhance ACE2 shedding [45,46]. Of further note, it is known that AT1R directly upregulates nuclear factor- κ B (NF- κ B) [49–51] and ADAM17 [52], which in turn can cleave membrane-bound TNF to produce soluble TNF. So, we may have here a vicious spiral where ACE2 loss leads to overstimulation of the AT1R axis and subsequent upregulation of NF- κ B and ADAM17, triggering ACE2 shedding enhancement. TMPRSS2 can also participate in the processing of ACE2 [53]. Soluble ACE2 remains biologically active and competes for S protein binding. Furthermore, endocytosis of ACE2 after binding to SARS-CoV has been reported [54]. Interestingly, it has been reported that ACE2 is an interferon-stimulated gene *in vitro*, suggesting that the cell inflammatory response could indirectly enhance SARS-CoV-2 infection [55].

Other receptors have been reported to mediate SARS-CoV infection. DC-SIGN and L-SIGN serve as alternative receptors for SARS-CoV entry independently of ACE2 [56–58].

CD147, a surface transmembrane glycoprotein could represent a co-receptor for viral entry as it can enhance infection by SARS-CoV as well as HIV-1 or Measle Virus [59–61]. Chen et al. showed that N protein of SARS-CoV bound to Cyclophilin A could interact with CD147 [59]. This protein (also known as Basigin) is involved in the expression of matrix metalloproteinases and can interact with several proteins such as integrin, monocarboxylate transporter proteins, cyclophilins or caveolin-1 [62]. Cyclophilin-CD147 interaction has been involved in the regulation of inflammatory responses and the pathogenesis of various inflammatory-mediated diseases [63]. However to date, there is no evidence for CD147 as a direct SARS-Cov-2 binding receptor [64] although the Cyclophilin inhibitor Alisporvir could inhibit SARS-CoV2 in vitro [65].

Vimentin a structural protein may also serve as a co-receptor as it can interact with SARS-CoV S protein during viral entry [66]. Additionally, the cellular receptor neuropilin-1 (NRP1) expressed on the olfactory epithelium has been shown to facilitate SARS-CoV-2 infection [67,68]. The interaction between the S protein and NRP1 may provide a possible pathway for virus entry into the nervous system through the olfactory system.

The virus main infected cell-types and target-organs are described in Figure 3, and detailed hereafter.

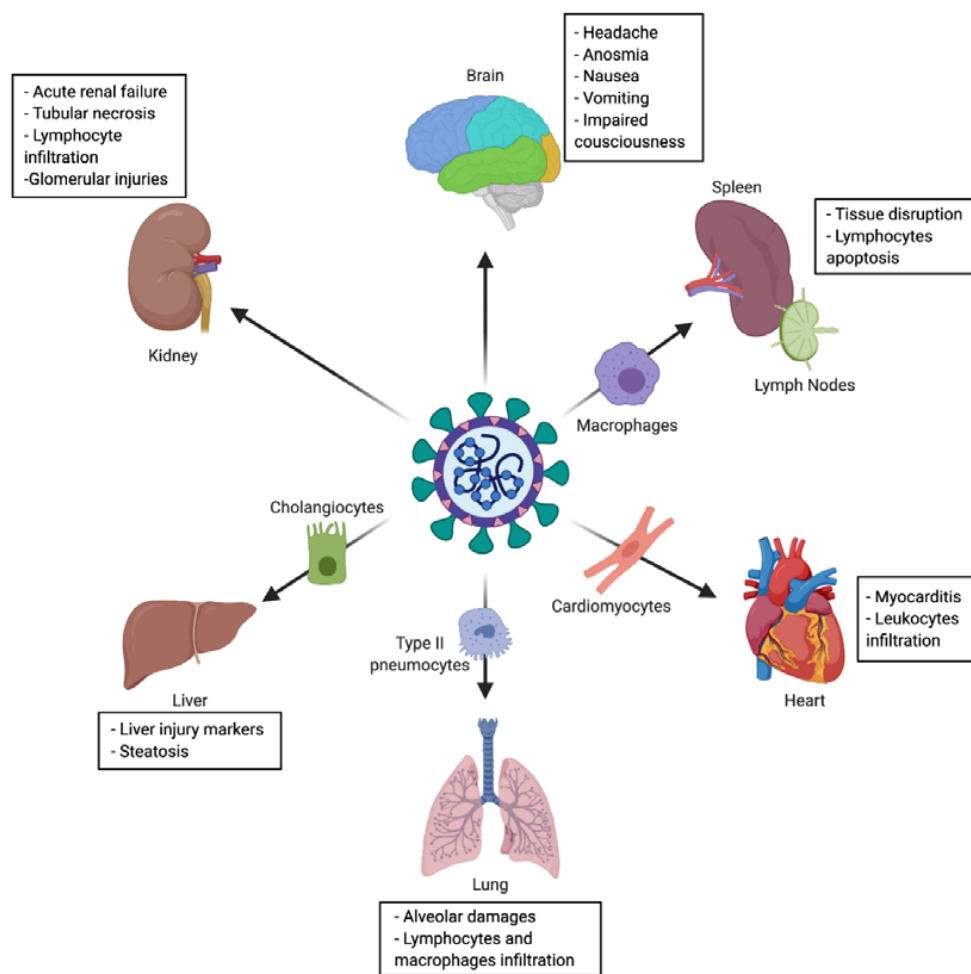


Figure 3. Tropism and multiple organ injuries in SARS-CoV-2 infection. SARS-CoV-2 infection has been associated with multiple organ injuries due to viral tropism. Among injured organs (and targeted cell) we can find: lung (type II pneumocyte), heart (cardiomyocyte), liver (cholangiocyte), spleen and lymph nodes (macrophage), kidney and brain.

2.3.1. Nasal Cavity

Since SARS-CoV-2 is notably transmitted by droplets, the nasal cavity is its first route of entry. Among the cells present in the nasal cavity, respiratory epithelial cells (goblet cells and ciliated cells) were demonstrated to express ACE2 and TMPRSS2 by some [15,17,42] while only TMPRSS2 by others [69]. Thus, these cells represent an accessible source of viral material for detection of SARS-CoV-2 infection with higher viral load on the nasal swab than on the throat swab [70], meaning that the virus actively replicates in this place. Therefore, the nasopharyngeal swab is usually employed in routine for a diagnosis purpose. In addition, these data make these cells a possible reservoir for dissemination within and between individuals [42].

2.3.2. Olfactory Epithelium

From a clinical point of view, nasal infection of SARS-CoV-2 is associated with olfactory and gustatory dysfunctions, which should be recognized as important symptoms of infection [71], observed in more than 50% of the patients [72,73]. Olfactory epithelium was shown to express ACE2 and TMPRSS2 [74], but also NRP-1 [67,68]. Even if pathophysiology underlying anosmia and gustatory dysfunction is not clearly elucidated, three mechanisms are evoked [75]. First, local inflammation due to infection of vascular and support cells of olfactory bulb, provoke downstream effect blocking odor conduction. Second, damage of support cells, responsible for water and ion balance, could influence signaling from olfactory sensory neurons. Third, damage to sustentacular and Bowman's gland cells may lead to olfactory sensory neurons death and disruption of the entire olfactory epithelium [75].

2.3.3. Lung

Lung is the organ the most concerned by SARS-CoV-2 outcomes. The most common symptomatology of COVID-19 is related to lung and respiratory tract involvement: dry cough, sputum production and shortness of breath). Indeed, infection leads to pneumonia (abnormalities on chest CT) and in severe cases to respiratory failure, which is generally the cause of death [2,9,76–78]. However, the COVID-19 pneumonia is an atypical viral pneumonia, with frequently observed dissociation between patients' well-preserved lung mechanics and the severity of hypoxemia [79]. This discrepancy could be explained notably by lung vascular injury and thrombosis induction leading to lung hypoperfusion [80]. On a histopathological point of view, pulmonary changes are the most significant, although nonspecific. In the context of SARS-CoV-2 infection, different histopathological patterns of acute lung injury have been described so far: diffuse alveolar damage (DAD), which is closely associated with acute respiratory distress syndrome (ARDS), acute fibrinous and organizing pneumonia (AFOP) and lymphocytic pneumonia [81–83]. However, the frequency, the context and the clinical implication of various histopathological patterns is yet-to-be elucidated. DAD pattern, characterized by numerous hyaline membranes, is often reported, associated with lymphocytes and few macrophages infiltration, as congested alveolar capillaries [84,85]. Type II pneumocytes are the principal target of SARS-CoV-2 in the lung, leading to desquamative and dysmorphic pneumocytes (multinucleated syncytial cells, atypically enlarged, large nuclei, amphophilic granular cytoplasm and prominent nucleoli) [82]. The main pulmonary pathologic findings are summarized in Table 1.

Table 1. Main pathologic findings in the context of SARS-CoV-2 infection reported in the literature. DAD: diffuse alveolar damage and AFOP: acute fibrinous and organizing pneumonia.

Organ	Main Reported Pathologic Findings
Lungs	Edema Mononuclear inflammatory cells (lymphocytes, plasmocytes) Cellular or proteinaceous exudate Type II pneumocyte hyperplasia with cytologic atypia Vascular congestion Fibrinoid vascular necrosis Hyaline membrane formation (hallmark of DAD) Fibrin deposition with early organization Extensive intra-alveolar “fibrin balls” and organizing pneumonia (AFOP) Desquamative pneumocytes
Gastrointestinal tract	Plasma cell and lymphocyte infiltrate Edema in the lamina propria Partial epithelial degeneration, necrosis, shedding of gastric and intestinal mucosa
Liver	Mild microvesicular steatosis Mild lobular and portal activity Centrilobular sinusoidal dilatation
Heart	Cardiomyocyte hypertrophy Degeneration and necrosis of some cardiomyocytes, mild interstitial hyperemia Edema Infiltration of a small number of lymphocytes, monocytes and neutrophils
Kidney	Diffuse proximal tubule injuries (loss of brush border, vacuolar degeneration, acute tubular necrosis) Lymphocyte infiltration Glomerular injuries

Loss of ACE2 activity after infection has been suggested to be associated with acute lung injury as it induces an imbalance of the renin–angiotensin system as aforementioned [86].

2.3.4. Gastrointestinal Tract

It is also possible to cite gastrointestinal outcomes including diarrhea, nausea, vomiting and rarely abdominal pain [87]. SARS-CoV-2 was reported to infect ACE2+ glandular cells in the gastric, duodenal and rectal epithelia [88]. Histopathology indicated infiltration of plasma cells and lymphocytes and interstitial edema in the lamina propria, in the context of SARS-CoV-2 infection [85,88]. Moreover, in some reports, infection in the gastrointestinal tract is associated with partial epithelial degeneration, necrosis, shedding of gastric and intestinal mucosa [85] and in other, with no damage of the mucous epithelium [88] (Table 1). Of note, if discharge criteria of patients are mainly based on the resolution of pulmonary symptoms (with resolved respiratory symptoms, improved acute exudative lesions on CT images and two consecutively negative RT-PCR from respiratory samples), gastrointestinal persistence of SARS-CoV-2 may be underrated. Indeed, viral RNA have been detected in stools of some patients even after resolution of respiratory symptoms and up to 35 days after onset of symptoms, leading to a protracted form of disease characterized by gastroenteritis symptoms requiring readmission to hospital [89].

2.3.5. Liver

It is largely reported that aspartate transaminase (AST), alanine transaminase (ALT) and bilirubin levels are increased during COVID-19, these three markers testifying from liver injury. In addition, they are often accompanied by an increase of acute phase inflammation markers (procalcitonin and C-reactive protein) [2,76,78]. This liver injury is usually mild and transient. MERS-CoV was already associated with liver injury, confined in portal tract and hepatic lobule [90]. These findings were

corroborated for SARS-CoV-2, with mild microvesicular steatosis, mild lobular and portal activity and centrilobular sinusoidal dilatation [81,82] (Table 1). It has been shown that SARS-CoV-2 is able to target cholangiocytes. Its cytopathogenic effects might in part explain the liver damages observed in COVID-19 patients, due to accumulation of bile acid [91]. Apart from viral direct effects, other mechanisms cannot be excluded, such as drug toxicity.

2.3.6. Cardiovascular System

Patients with pre-existing cardiovascular disease are at higher risk for mortality from COVID-19 [92]. Moreover, cardiovascular complications are frequent among patients with COVID-19, regardless of their pre-existing conditions [93,94]. Myocardial inflammation and injury are a common manifestation of COVID-19 as it has been reported during the MERS-CoV or the SARS-CoV [95,96]. SARS-CoV-2 could infect and induce cytotoxicity in human cardiomyocytes in vitro and recent autopsy evidences confirmed that direct myocardial tissue infection might occur given that ACE2 is highly expressed in myocardium [97,98]. On a histopathological plan, some described cardiomyocyte hypertrophy, degeneration and necrosis of some cardiomyocytes, mild interstitial hyperemia, oedema, infiltration of a small number of lymphocytes, monocytes and neutrophil [85] while others reported a few interstitial mononuclear inflammatory infiltrates [82].

The endothelium is also an essential contributor to the pathogenesis of COVID-19 [99]. Histopathology indicated that SARS-CoV-2 might induce endotheliitis in several organs, including the lung, as a result of both direct endothelial cells infection and overreacting inflammatory response [100]. Moreover, endotheliopathy characterized by increased thrombotic and microvascular injuries are also an important feature of COVID-19 complications and are likely to be associated with critical illness and death [101].

2.3.7. Brain

Regarding the proximity of nasal mucosa, the first entry-site of infection, with the brain (via the cribriform plate of ethmoid), it is possible to assume an infection of the central nervous system (CNS). Above all, CNS manifestations were reported during with previous epidemics of SARS-CoV and MERS-CoV, where CNS manifestations were reported [102,103]. Indeed, SARS-CoV had shown the ability to infect neurons [104,105]. Consistent with these data, CNS manifestations of COVID-19 are also depicted (headache, nausea and vomiting) suggesting that CNS is targeted by SARS-CoV-2. Among severe patients, even acute cerebrovascular diseases and impaired consciousness was observed [106–108]. However, these manifestations are clearly nonspecific, thus involvement of CNS remains to be ascertained, notably through cerebrospinal fluid explorations or autopsies [109]. Anyway, it remains that more specific neurological manifestations were observable in some patients [108]. Thus, Moriguchi et al. reported a first case of meningoencephalitis. This patient initially presented a generalized seizure and Glasgow score of 6 associated with SARS-CoV-2 RT-PCR positivity in cerebrospinal fluid but not the nasopharyngeal swab. Additionally, SARS-CoV-2 can lead to spinal cord injury and myelitis [107,108], which manifested as the Guillain-Barré syndrome notably in two case reports [110,111]. Finally, a possible involvement of SARS-CoV-2 infection in the development of long-term neuropathology, such as multiple sclerosis, is conceivable [108]. Indeed, SARS-CoV infection has already been linked with multiple sclerosis [108].

2.3.8. Kidney

Acute kidney failure was reported during SARS-CoV-2 infection [112,113]. Among the clinical manifestations of kidney dysfunction, hematuria [114], elevation of serum creatinine [115], blood urea nitrogen [115] and/or proteinuria [114–116] were reported. SARS-CoV-2 seems to be able to target the kidney: virus-like particles were visible in the kidney by electron microscopy and immunohistochemistry showed accumulation of SARS-CoV-2 antigen in kidney tubules. Moreover,

pathologic findings include diffuse proximal tubule injuries (loss of brush border, vacuolar degeneration and even acute tubular necrosis), lymphocyte infiltration [112] and glomerular injuries [85] (Table 1).

2.3.9. Secondary Lymphoid Organs

On a whole new level, SARS-CoV-2 is targeting the immune system. Indeed, ACE2 was shown to be expressed by macrophages from lymph nodes and spleen. This has been related to histologic disruption of these secondary lymphoid organs [85,117]. Furthermore, even if T cells and B cells are not directly targeted by SARS-CoV-2, it has been shown that SARS-CoV-2 induces lymphocytes apoptosis via enhancement of Fas-signaling and IL-6 signaling, which may partially explain lymphopenia observed in infected patients [117], associated eventually to other cytokines-induced phenomena [118,119].

2.3.10. Adipose Tissue

Recent data points to overweight and obesity as major risk factors for developing a severe form of COVID-19. In a recent French retrospective study nearly half of the patients admitted in an intensive care unit for COVID-19 had a body mass index—BMI over 30 kg/m². In that study severe obesity was a risk factor to require invasive mechanical ventilation independently of diabetes, hypertension, sex and age [120]. These data are not surprising as obesity has been previously reported as an independent factor for severe respiratory form and morbidity in other viral infections such as H1N1 influenza [121,122].

A link between obesity and COVID-19 severity may be related to the adipose tissue. Adipose tissue can be a direct target of SARS-CoV-2 as the ACE2 receptor is found in adipocytes smooth muscle cells and endothelial cells within this tissue [123]. However, there is currently no evidence that the adipose tissue acts as a reservoir for the virus.

Adipose tissue is a highly vascularized and active secreting organ interfering with metabolism but also immunity. Obesity is considered as a low-grade inflammatory disease due to the altered profiles of cytokines secreted by the dysfunctional adipose tissue [124]. Obesity is associated with increased levels of proinflammatory cytokines secreted by adipose tissue as IL-6, IL-1 and TNF- α and a decrease of anti-inflammatory cytokines such as IL-10. The “pre-activated” adipose tissue may participate in the explosive proinflammatory state in case of extensive infection. Severe forms of COVID-19 are associated with a “cytokine storm”, many of the reported cytokines are secreted in other inflammatory conditions by adipose tissue [125]. Lymphocytes and macrophages dysfunction are common in obesity with decreased Treg and lymphocytes T suppressor/helper. The same features have been found in severely ill patients with SARS-CoV-2 [125].

2.3.11. Musculoskeletal Symptoms

Frequent myalgia and fatigue (44–62%) were reported in Chinese and European series [126,127]. The cell receptor gene ACE2 was also shown to be expressed at low levels in human muscular tissue [128]. Respiratory muscles might also be affected [129]. No joint or bone involvement was reported so far.

Even with all these data, fundamental research is urgently needed to assess outcomes of the infection in the different organs, as no consensus exist for organ injury, and knowing that some histopathological findings cited may be linked either to a direct effect of virus, to an exacerbated immune response, to pre-existing injuries or even to pharmacological care.

3. Immunopathology of SARS-CoV-2

3.1. Cellular Response

3.1.1. Innate Immune Response

Pattern Recognition Receptor

Innate immune cells need to recognize pathogens (via pathogen associated molecular pattern—PAMP) by receptors like pattern recognition receptor—PRR. In coronaviruses, as RNA viruses, endosomal receptor Toll Like Receptor (TLR) 3 and TLR7 and cytosolic retinoic acid-inducible gene I (RIG-I) and melanoma differentiation-associated protein 5 (MDA-5) have been shown to recognize SARS-CoV and MERS-CoV. This leads to activation of a signaling cascade through NF- κ B and IRF3 pathways, resulting in a classical immune antiviral response with induction of type I interferon (IFN) and other proinflammatory cytokines as shown in Figure 4 [130]. During SARS-CoV and MERS infection, diverse dampening strategies of this cytokine response have been shown and are related to disease severity [131].

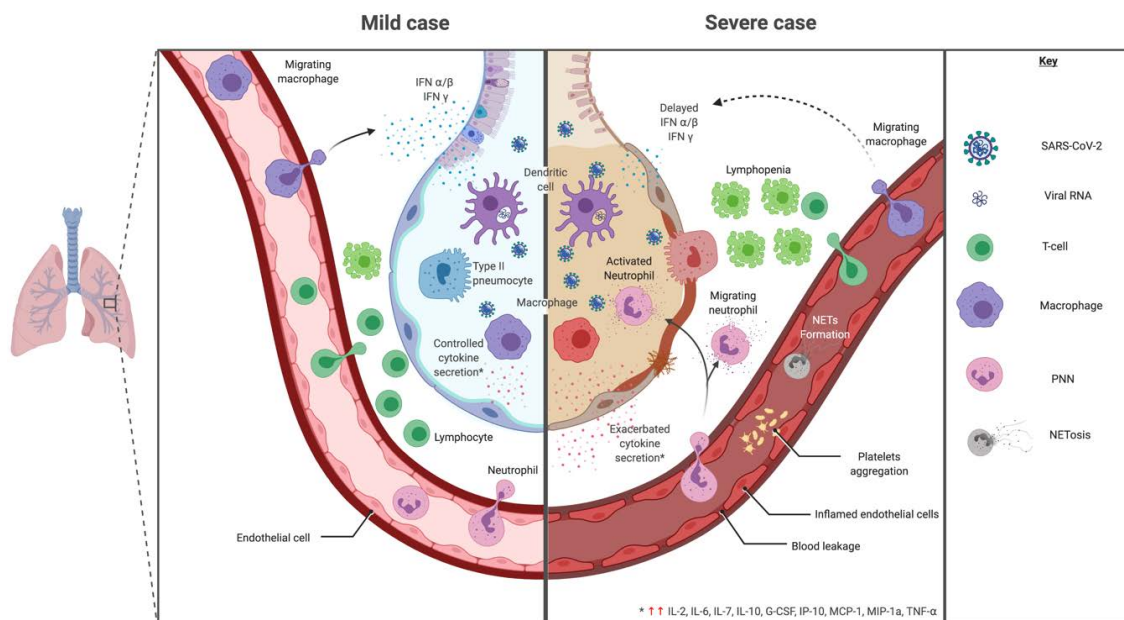


Figure 4. Mild versus severe immune response during SARS-CoV-2 infection. In regards to cytokine signature during SARS-CoV-2, mild and moderate cases showed a controlled response with higher expression of IL-1 β , IL-1RA, IL-2RA, IL-6, IL-7, IL-8, IL-9, IL-10, basic FGF, G-CSF, GM-CSF, HGF, IFN γ , IP-10, MCP-1, MIP-1a, MIP-1b, PDGF, TNF- α and VEGF. While, a cytokine-induced immunopathological mechanism has been observed with an increase of IL-2, IL-7, IL-17, IL-10, MCP-1, MIP-1a and TNF- α in severe cases, leading to a bystander effect.

This immune evasion leads to a greater viral load by delaying the type I IFN response thus following in an exacerbated bystander immunopathogenicity [132,133]. One key component of the immunopathogenesis is the accumulation of macrophages and neutrophils in tissues.

SARS-CoV-2 seems to follow the same pathways for recognition and dampening strategies, but other mechanisms may be discovered [130,134]. The major point is the suppression of the type I IFN response [130,135,136]. Although monocytes/macrophages and dendritic cells should theoretically be key producers of type I IFN, as primary responding tissue innate immune cells, studies to date showed minimal cytokine expression in the first stages of the disease.

Dendritic Cells (DCs)

As the strongest antigen-presenting cells (APC), dendritic cells (DCs) play a leading role in stimulating and linking innate and adaptive immunity. They represent one of the first-line cells during the onset of infectious disease. Thus, they are a direct target of viral evading strategies to reduce the immune response. Studies on DCs susceptibility for other coronaviruses showed susceptibility to SARS-CoV but at a low level and without a strong triggering of type I IFN secretion. On the other hand, MERS-CoV was able to activate DCs and to induce a greater cytokine reaction than SARS-CoV [137]. With the presence of ACE2 on the surface membrane of DCs, a question remains on their infectability by SARS-CoV-2 [138]. As major producers of type I IFN, they also play a role in cytokine release and attraction of immune cells. Comparably to SARS-CoV, the induction of such cytokine during SARS-CoV-2 infection is to be further explored [134]. In COVID-19 patients, DCs percentage in blood did not change with disease severity but they showed a reduction of CD86 expression in severe compared to mild disease [139]. Variation of DC subsets has been observed. CD1c+ DCs were decreased with disease severity and recruited in the lung during ARDS [140].

Macrophages

Monocytes and macrophages are important innate immunity actors of airway interface. In pulmonary infection, alveolar macrophages initiate the production of type I IFN [141].

Alveolar macrophages express ACE2 but at a low level [138]. They are present since the initiation of the disease and represent one of the initial cells involved in the innate immune response. The mechanism of entry of the virus in macrophages is still under study: through phagocytosis, ACE2-dependent [117] or -independent pathways. Studies of the SARS-CoV and MERS-CoV cellular response showed a delayed cytokine response in the initial stages of the disease. Later, they are responsible for releasing high levels of proinflammatory cytokines but low amounts of IFNs. However, the IFN response in the initial stages of viral infection is key to mounting antiviral immunity. The secondary rapid cytokine release by recruiting proinflammatory cells is hypothesized to be responsible for host tissue injury [142]. During COVID-19, a decrease of classical monocytes (CD14+ and CD16–) was observed with an increase in intermediate (CD14+ and CD16–) and non-classical (CD14– and CD16+) monocytes [141]. A mouse model of SARS-CoV infection showed that a delayed type I IFN release increased disease mortality through accumulation of inflammatory macrophages [143]. Depletion of those macrophages, but not of neutrophils, led to a protective effect on disease mortality without an increase in viral load [143]. In bronchoalveolar lavage of COVID-19 infected patients, monocytes-derived macrophages (overwhelming tissue resident macrophages) and neutrophils were increased in severe patients. Additionally, macrophages had an M1-like gene expression pattern in severe patients whereas moderate patients had a more M2-like macrophage profile [144]. Type I IFN can induce macrophages polarization depending on their microenvironment [141]. During severe COVID-19, macrophages have a M1 proinflammatory cytokine profile and are likely to be a key factor of cytokine related severity clinical features [145,146].

Polymorphonuclear Neutrophils (PMN)

Neutrophils are predominant actors for disease control in innate immunity specifically during respiratory diseases and ARDS. Neutrophils have a central role in driving an inflammatory pathogenic state, with the production of reactive oxygen species (ROS), cytokines, proteases and neutrophil extracellular traps (NETs), which exude histones and DNA [147–149]. NETs are key features to contain infection but some pathogenic effects have also been described [150,151]. As ARDS and immunothrombosis are predominant features in critically ill patients in COVID-19, the implication of neutrophil in this setting has to be explored. In previous coronaviruses infections, neutrophil appears as a major actor of aggravation rather than disease control. An animal model of depleting neutrophil during coronavirus infection shows an essential role of PMN for mounting an effective viral response

but induced lung injury [152]. An increase in neutrophil count has been associated with disease severity. Single-cell RNA sequencing based peripheral blood mononuclear cells profiling showed an increased neutrophil subpopulation expressing a progenitor profile in severe cases consistent with the reported neutrophil expansion [153]. Furthermore, the reduction of the ratio of neutrophil to lymphocyte is associated with a worse outcome [154]. A recent study of NETs during COVID-19 showed an increased sera level of cell-free DNA, myeloperoxidase-DNA and citrullinated histone H3. These were increased in critical patients needing mechanical ventilation compared to those not mechanically ventilated [155,156]. This role of NETs in ARDS may represent a new therapeutic target in those settings [148,155]. At a histological level, neutrophil infiltration has been confirmed in autopsy samples [155].

Complement

The complement system plays an essential role during response to bacterial, viral and fungal infection. It acts rapidly to activate the host immune system and attract cells towards the infection site. Its activation is tightly controlled to avoid detrimental injury. C3a and C5a have proinflammatory properties by recruiting inflammatory cells and activating PMN. They participate in acute pulmonary injury during coronavirus infection [157]. The use of an anti-C5a antibody in a mouse model of MERS-CoV infection has shown an improvement of respiratory symptoms without an increase in viral load [157].

A recent histological study of pulmonary and cutaneous biopsies or autopsy samples from five critically ill patients infected by SARS-CoV-2 showed complement mediated microthrombotic disease with deposits of C5b-9, C4d and Mannan-binding lectin serine protease 2 (MASP2). Thus, some atypical ARDS features of COVID-19-related severe respiratory distress might be caused by microvascular injury after activation of complement pathways [158]. The complement system seems a good candidate for a therapeutic target to limit disease severity by limiting inflammatory cell recruitment or direct complement activation related microthrombopathy [134,158].

Natural Killer (NK) Cells

With CD8+ T cells, NK cells are predominant actors to impeding viral replication by killing infected host cells. In previous studies on SARS-CoV, a dampening of cell-mediated cytotoxicity was observed with a reduction of NK and CD158+ NK cells with disease severity [159]. Animal models of SARS-CoV infection with specific NK cell depletion found no aggravation of the disease suggesting that NK cells are not essential for the SARS-CoV immune response [102,159]. Clinical studies during COVID-19 showed a decrease of NK cell count in severe but not mild disease, probably linked to viral propagation [146,153,154]. The dynamic profile of the NK cell count did not show differences between dead or survivor groups of the most severe patients [160]. The time to NK cell normal cell count recovery paralleled clinical amelioration. However, SARS-CoV severe disease was marked by a functionally exhausted profile with increased membrane expression of NKG2a and a reduction of CD107a+, IFN γ +, IL-2+ and TNF- α + NK cells [161]. Wilk et al. demonstrated that NK CD56+ cells were reduced in all COVID-19 patients and NK CD56- cells were reduced in ARDS patients [153].

3.1.2. Adaptive Immune Response

T Cells

Secondarily to the innate immune cells initial reaction, the adaptive immunity plays an important role in recognition and killing of infected cells with cytotoxic CD8+ lymphocyte and in mounting a humoral antigen specific response with CD4+ lymphocyte. Dysregulation of lymphocyte subsets can occur during viral infection. During COVID-19, lymphopenia is a common feature [162]. A decrease of total lymphocytes but also of CD4+ T cells, CD8+ T cells and B cells decrease was reported. The lymphocyte levels were lower in severe compared to mild cases. This is comparable to data

during SARS or MERS infection. In addition, CD8⁺ T-cell decrease and CD4/CD8 ratio increase were correlated with disease severity [162]. The normalization of the different subset cell counts appeared during the clinical convalescence.

In the context of previous coronaviruses epidemics, a strong T-cell response was associated with higher titers of neutralizing antibodies. Specific T-cytotoxic cells were still found 10 years after infection with SARS or MERS infections [163–166].

During SARS infection, the viral structural proteins E [167], S [168], M [169] and N [167,170] were shown to induce T cell antigen-specific responses [165,166]. The acute phase is followed by an important contraction of the antigen-specific T cell pool. T CD4 antigen specific cells presented a central memory phenotype (CD45RA[−] CCR7⁺ CD62L[−]) with production of IFN γ , TNF- α or IL-2 whereas CD8⁺ T cells presented an effector memory one (CD45RA⁺ CCR7[−] CD62L[−]) with production of IFN γ , TNF- α , perforine and granzyme [59,165,166]. Emerging data point that memory CD4⁺ T cell specific for commonly circulating human coronaviruses (HCoV-OC43, HCoV-229E, HCoV-NL63 and HCoV-HKU1) can cross-react with SARS-CoV-2 epitopes [171]. Thus, Mateus et al. mapped 142 T cell epitopes across the SARS-CoV-2 genome and showed a population of responsive memory CD4⁺ T cells, even in unexposed individuals [171]. Even if it is still very speculative, this pre-existing repertoire of memory CD4⁺ T cell against other coronaviruses may cross-react with SARS-CoV-2 and contribute to variations observed in COVID-19 patient disease outcomes [171–173]. This hypothesis is supported by similar data, indeed, reactivity in blood samples of unexposed individuals has been reported by several teams [174–178].

B Cells

The importance of mounting the humoral response was shown by the presence of a non-switched B lymphocyte profile in deceased patients from SARS or MERS viruses. The role of neutralizing antibodies is essential in a later stage of the disease and to prevent reinfection.

Evaluation of the antibodies response after SARS-CoV infection showed apparition of IgG as soon as 4 days after infection. Most patients had a seroconversion at 15 days [163,179]. Antibodies directed against the coronavirus S protein are protective neutralizing antibodies but binding non-neutralizing antibodies against other viral proteins are also described [180]. During the follow-up period, IgM peaked at 1 month and IgG at 2–4 months [181]. A decrease of antibody titer was observed at 3 years [181] and undetectable in 21 of 23 patients at 6 years [182]. There was no association between the drop of neutralizing antibody titer and disease severity, comorbidity or treatment use [183].

In SARS-CoV-2, the same chronological appearance of IgM and IgG has been observed [184]. In severe cases, a strong acute humoral response level has been reported [185] with increased proportion of plasmablasts in COVID-19 patients [153]. Nevertheless, a rapid decrease of the SARS-CoV-2 specific antibodies titers has been demonstrated in severe cases [186–188]. Variation of antibody response kinetic with disease severity [188,189], anti-N and anti-S antibodies antigen specificity [187,189], cytokine environment variation or major lymphopenia with disease severity [190] has been described. Their impacts on humoral protection maintenance have to be further studied. Long-lived plasma cells and memory-B cells responses and maintenance are important actors of long-term humoral protection [191,192]. The mechanisms underlying the lack of long-term humoral immunity in some infectious disease are poorly understood [193]. Pathogen's antigen evasion mechanism [194], lower B-memory cell response [195,196] or long-lived cell homeostasis anomaly [197,198] may be leads to explore.

In some animal and human coronaviruses, the mechanism of antibody-dependent enhancement (ADE) has been suspected comparably to the dengue virus. Notably for SARS-CoV, the *in vitro* experiment showed enhanced infection with specific anti-spike antibodies highly diluted [199,200]. Based on the similarity between SARS-CoV and SARS-CoV-2, some question the possibility of occurrence of ADE during COVID-19 [201] but to date no strong evidence has been found [202].

Post-infectious autoimmune disorders have been reported [203,204] such as antiphospholipid syndrome [205], immune thrombocytopenic purpura [206,207], autoimmune hemolytic anemia [208,209], Guillain-Barré syndrome [110,210,211] or Kawasaki-like syndrome in children [212].

3.2. Molecular Response

To mount an effective antiviral response, innate and adaptive immunity are essential to control viral infection and clean infected cells with limited inflammation. For their actions immune cells release variable panels and levels of cytokines. This release if uncontrolled can have detrimental consequences for the patient. A delayed response may induce viral tissue injury, which can in turn lead to an exaggerated proinflammatory cytokine response. In the setting of sepsis and multi-organ dysfunction syndrome (MODS), two phases are described. An early phase with systemic cytokine release, neutrophil-generated ROS and cytotoxic lymphocyte inducing inflammatory systemic response with endothelial damage. A later phase consists of an amplification of inflammation by interstitial compartment cells in organs further exacerbating parenchymal injury [213].

The pulmonary failure during MODS appears as acute lung injury or ARDS (Figure 4). In pathogenesis, cytokines act to initiate and amplify the inflammatory response. Some major cytokines found are IL-1, IL-6, IL-8, IL-10 and TNF- α . The cytokine attraction and activation of neutrophils acts as the main pathogenic system inducing epithelial lung injury. This was confirmed with histological studies [213].

ARDS and immunothrombosis are predominant features in severe COVID-19 [142,214]. It has been long described the importance of neutrophil activation with NETosis, cytokine, ROS and protease release in pathophysiology of viral ARDS and immunothrombosis in sepsis [147–149,215,216].

In SARS-CoV infection, the viral 3a protein has been shown to induce NLRP3 mediated inflammasome activation [217]. A delayed innate immune response with low type I IFN release was associated with a later exacerbated proinflammatory (such as IL-1 and IL-6) cytokine response in severe cases. The timely cytokine response is necessary for a rapid recruitment and clearance of neutrophils and transition to adaptive immunity with minimal immune tissue damage [218].

In regards to cytokine signature during SARS-CoV-2, studies showed an adapted, controlled response in mild and moderate cases with higher expression of IL-1 β , IL-1RA, IL-2RA, IL-6, IL-7, IL-8, IL-9, IL-10, basic FGF, G-CSF, GM-CSF, HGF (hepatocyte growth factor), IFN γ , IP-10, MCP-1, MIP-1a, MIP-1b, PDGF, TNF- α and VEGF compared to a healthy control as shown in Figure 4 [2,126,219]. These results are summarized and compared to other infectious settings in Table 2 [126,220–224].

In severe cases, clinical features show severe pneumonia, ARDS or MODS [2]. A cytokine-induced immunopathological mechanism has been observed with an increase of IL-2, IL-7, IL-17, IL-10, MCP-1, MIP-1a and TNF- α compared to moderate cases [126] (Figure 4). Other studies looking for cytokine biomarkers of worse prognosis between severe and moderate cases show that most cytokines were comparable between groups [2,219]. However, IP-10, MCP-3 and IL-1RA were significantly higher with a correlation to gravity evaluated by PaO₂/FiO₂ and Murray scores [219]. TNF- α , IL-1, IL-8 and IL-6 also increased in severe vs. non severe cases [220]. TNF- α has been shown to enhance ACE2 shedding, which participate to lung injury during SARS-CoV [145]. There was no increased risk of severe COVID-19 for patients treated by TNF- α blockers [225]. A case of severe COVID-19 disease in a recently diagnosed Crohn's disease was ameliorated under TNF- α blockade [226]. Similarly to SARS-CoV, pyroptosis may be triggered during COVID-19 leading to major IL-1 β production and uncontrolled cytokine release [145,217]. An increased IL-6/IFN γ ratio, found in severe cases, could be a sign of inappropriate immunopathologic cytokine response [218].

Table 2. Cytokine profile during diverse infections.

Cytokine (pg/mL)	COVID-19 [220] * [126] #	Dengue Fever [221]	Severe Chikungunya [224]	Viral Sepsis [222]	Leptospirosis [223]	Bacterial Sepsis [222]
IFN γ	9 #	772.4 \pm 1762.7	12.6 \pm 10.8	9.54 \pm 19.16	7.2	16.8 \pm 39.61
IL-1	5 (no detectable) *	3.3 \pm 2.2	209.6 \pm 936.8		9.6	
IL-2	8 #		2.5 \pm 0.8	1.46 \pm 1.04	4	3.2 \pm 6.67
IL-6	25.2 (9.6–54.5) *	24 \pm 47	671.9 \pm 1261.3	63.23 \pm 265	74.7	2533 \pm 6559
IL-8	18.4 (11.3–28.4) *	21.1 \pm 10.1	734.1 \pm 1721.9	30.31 \pm 38.01	251.1	1249 \pm 6944
IL-10	6.6 (5–11.3) *	32.5 \pm 54	90.9 \pm 417	14.27 \pm 16.75	21	205.11 \pm 741.85
TNF- α	8.7 (7.1–11.6) *		15.1 \pm 107.1		4	
IP-10	>1000 #	56.6 \pm 278.5	291.8 \pm 460	1944 \pm 1295		666.72 \pm 766
MCP-1	50 *	389.6 \pm 929.3	545.4 \pm 418.9	494.31 \pm 679		4533 \pm 1458
MIG			791.7 \pm 434.9	660.71 \pm 661		1377 \pm 1906

IFN γ : Interferon γ ; IL-1: Interleukin 1; IL-2: Interleukin 2; IL-6: Interleukin 6; IL-8: Interleukin 8; IL-10: Interleukin 10; TNF- α : Tumor Necrosis Factor α ; IP-10: Interferon gamma-induced protein 10; MCP-1: Monocyte Chemoattractant Protein 1; MIG: Monokine Induced by Gamma interferon. * Data coming from [220]. # Data coming from [126].

Those deregulatory cytokine features may represent potential therapeutic targets for severe COVID-19. The family of dysregulated cytokine syndromes is vast and often associated with critical life-threatening features. It is generally simplified as “cytokine storm” but comprise of a wide range of primary or secondary etiologies [227]. Familial hemophagocytic lymphohistiocytosis (HLH), macrophage activation syndrome (MAS) a secondary HLH complicating an underlying autoimmune disease, MAS-like sepsis, which appears in severe sepsis with MODS, are classical representatives of the “cytokine storm syndrome” [228].

In comparison to primary and secondary HLH, the viral immunosuppression during severe COVID-19 is supposed to arise from blood lymphopenia [126], NK and CD8 exhausted profiles [161] and interferon suppression [214,229]. Following the primary delayed response, a secondary excessive cytokine non-type I IFN but proinflammatory profile (IL-6, IL-1, IP-10, IL-18, GM-CSF and IFN γ) appears [146,214,219]. Furthermore, an increased and persistent viral release draws a cytokine and T-cell response to clear infection but induces, at the same time, pulmonary damage and ARDS. This offers explanation to clinical features typically found in severe COVID-19 pneumonia [214].

Some particularities of severe COVID-19 differ from HLH or MAS. The immune deregulation seems more confined to the lung with features of ARDS, which is linked to hypercytokine release by macrophages, attraction and activation of neutrophils [214,215,229].

The typical ARDS features found in severe COVID-19 has a cytokine profile comparable to H1N1(2009) infection where elevation of IL-6, IP-10 was observed in severe but not mild disease [230]. Compared to other pathological conditions (H1N1 influenzae and bacterial infection), patients with COVID-19 experiencing ARDS showed lower global severity, as assessed with lower SOFA score. This suggests an earlier respiratory failure in COVID-19 [146,231].

In many studies, sepsis is used to understand severe COVID-19 physiopathology. A study trying to classify COVID-19 patients into three immune states found during sepsis (MAS-like, dysregulation with immunoparalysis or functional) showed that all severe cases had an immune dysfunction with the majority of patients harboring dysregulated immunity while the rest presented MAS-like profile [146]. To confirm this classification, a specific severity score (H-score) was increased in MAS-like severe COVID-19 patients but not in the dysregulated group with immunoparalysis. In the latter group, serologic measures showed no measurable levels of IFN γ and an increase in IL-6 and CRP levels. IL-6 being one of the drivers of immunopathogenesis, a specific therapy was tested but showed only partial efficacy. Further studies need to be produced.

Another predominant cytokine driver of immunopathogenesis described during viral ARDS is IP-10 [229]. Chemoattractant cytokines for neutrophils overproduced by macrophages in lung injury are also found during severe COVID-19. They represent potential therapeutic targets for severe cases [219].

3.3. Immune Evasion

Coronaviruses are well armed to evade the immune system and particularly the initial innate immune response. The mechanism of molecular immune evasion is still to be confirmed for SARS-CoV-2 but the experience of previous SARS and MERS coronaviruses points some potential ways of immune evasion [130,232]. A common mechanism to avoid recognition of the virus is the formation of a double vesicle shielding from PRR sensing [232,233]. Among the structural proteins that serve in the architecture of the virion, SARS N protein is suspected to interfere with RNA recognition by the host immune sensors [232,234–236]. SARS and MERS protein M interact with TRAF3 to disrupt the TRAF3-TBK1 complex [232,237].

MERS non-structural protein 4a (NSP4a), 4b (NSP4b) and papain-like protease (PLpro) are described to have an immunity-evading function [232,234,237]. NSP4a interacts with PACT to inhibit dsRNA recognition and inhibit protein kinase R (PKR) [232,237–239]. NSP4b antagonizes OAS-RNase L pathway thus limiting RNase L activation and binds to TBK1 [232,237,240]. NSP15 also limits RNA

sensor activation but through unknown pathway. PLpro protease uses deubiquitination to inhibit ISG15 action [237]. Additionally, NSP 1 in SARS and MERS degrade host mRNA [237,241,242].

For SARS, NSP 7, 16 and 15 and accessory proteins ORF3b, ORF6 and ORF9b have also inhibitory activities. NSP16 prevents RNA sensing by MDA5 by formation of cap structures [243]. ORF9b acts by inducing a proteosomal degradation of MAVS/TRAF3/TRAF6 [244]. The others dampen IFN production through unclear mechanisms but ORF3b and ORF6 alter IRF3 activation and thus antagonize IFN production and signaling through IFN β notably [232,234]. Furthermore, SARS-CoV PLpro inhibits IRF3 activation and deubiquitinates RIG-I, TBK1 and IRF3 [232,245]. Those potential mechanisms for SARS-CoV 2 immune evasion are summarized in Figure 5.

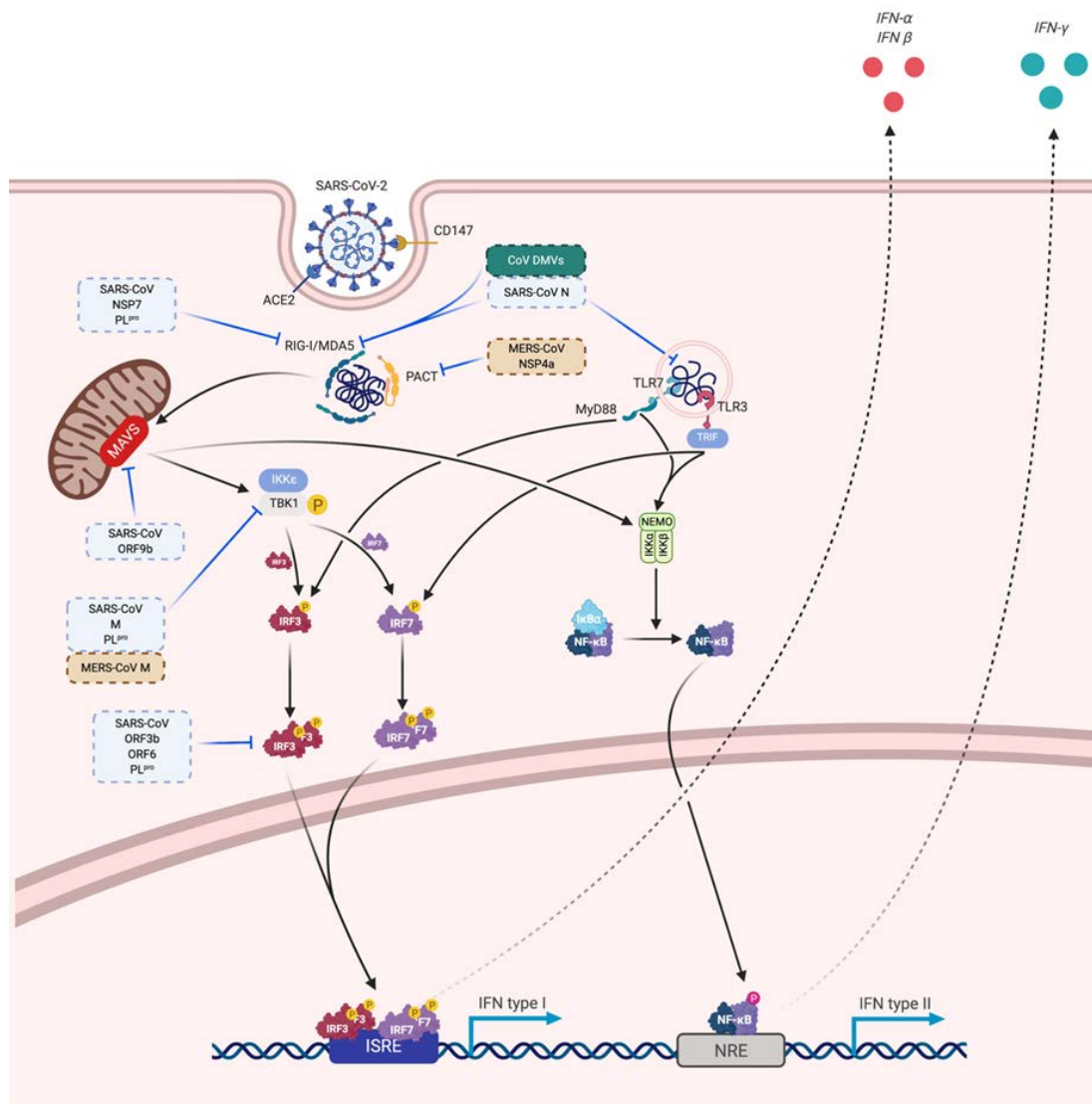


Figure 5. Viral sensing, innate antiviral response and immune evasion. Potential mechanisms of SARS-CoV-2 immune evasion based on previous studies on MERS-CoV (brown) and SARS-CoV (blue). Some mechanisms are inhibiting viral sensing, whereas others are directed against the innate antiviral response. Solid arrows correspond to a direct promoting activity, dotted arrows correspond to an indirect promoting activity and T-bars correspond to a direct inhibitory activity.

Other potential mechanisms are a reduction of presentation to an adaptive immune cell by downregulation of major histocompatibility complex (MHC) expression on antigen-presenting cells,

viral mutation, immune cell exhaustion and immune deviation to the Th2 profile or localization in the immune privilege site [130,246].

4. Regards to Discrepancies in Diverse Immune Conditions

4.1. Elderly

During COVID-19 epidemics, studies identified age as a major risk factor of disease severity and mortality. A higher proportion of severe, critically ill patients or deaths appeared within this population [247]. The progression to severity was also shorter. Some symptoms (shortness of breath and lymphopenia) and comorbidities (cardiovascular disease, chronic obstructive pulmonary disease and acute respiratory distress syndrome) were predictive of worst outcomes [247].

An explanation to this excess mortality is the mounting number of comorbidities with age. A reduction of T-cell diversity appears with aging. Interestingly, naive T-cell diversity is strongly reduced after 65 years old [248]. However, modification of senescent T-cell profile appears to compensate this lack of diversity and replication with aging [248]. Lega S. et al. hypothesized that disease severity with aging may be due to immune senescence with an insufficient pool of specific T-cell to overcome the viral replication [249]. In regard to host immunity during COVID-19, the part of the immunosenescence lacking an antiviral response is to be further explored.

4.2. Children

Since the beginning of the epidemic, children seem to be spared from infection by SARS-CoV-2 [250]. In February, a Chinese cohort found only 2.4% of patients under 19 years old. Among these, they had 2.5% of the severe forms and 0.2% of critically ill patients, compared to 13.8% and 6.1% respectively in the whole cohort [251]. They appear to more often suffer from gastrointestinal symptoms [250]. The lesser potency in children was also observed during SARS-Cov and MERS disease [250]. The infection mostly occurs through household contact. The immune system shows some discrepancies between early and adult life in innate and adaptive immune cells. This results in a difference in response to the pathogen including viruses with some being more potent during infancy [252]. For SARS-CoV-2, the immune response seems favorable in childhood compared to adulthood.

Nevertheless, the appearance of a pediatric multisystem inflammatory syndrome has been reported with clinical features of myocarditis and Kawasaki-like disease after severe SARS-CoV-2 infection [212,253,254].

4.3. Pregnancy

In regard to infectious disease and especially respiratory illnesses, pregnant women represent a high-risk population. The same has been reported with SARS-CoV and MERS-CoV [255]. For SARS-CoV-2 infection, an increased risk for preterm delivery, preeclampsia, premature rupture membrane or stillbirth seem to appear [256] but the mother prognosis seems better than during SARS-CoV or MERS-CoV diseases [255]. Mortality and morbidity during pregnancy are still unclear.

Some specific elements may explain such over-risk. Firstly, some common gestational symptoms may mask initial, non-severe COVID-19 symptoms like rhinitis or dyspnea. Thus, leading to community transmission and late diagnosis. Furthermore, reduction of total lung capacity with advancement of pregnancy can predispose for respiratory failure [255].

Secondly, focusing on the immune system, there are changes in innate and adaptive immune responses in the face of an infectious challenge like strong NK cells or monocytes responsiveness [256] or a shift of the Th1 cytokine profile to a Th2 profile [255]. The pregnancy is associated with global viral susceptibility. It is to note that, differently to SARS-CoV, the cytokine profile during SARS-CoV-2 infection shows Th1 but also Th2 (IL-4 and IL-10) cytokine increase. The Th2 shift profile in pregnant women may thus serve to reduce severity [255]. Additionally, the cytokine release occurring during

severe COVID-19, in addition to the gestation-linked proinflammatory state during the first and third semester, can alter fetal development and explain poor pregnancy outcomes [256].

In regard to their fetuses, no warning signal of vertical transmission has been observed [255].

4.4. Men/Women Susceptibility

A recent review of clinical and epidemiological findings during COVID-19 shows a 3-fold mortality increase risk in males compared to females [257]. This observation was also reported during SARS-CoV and MERS-CoV epidemics [258]. An animal model, with mice infected by SARS-CoV, reproduced this sex bias, which increased with age [258]. Sex hormones were associated to female protection.

In living organism, gender is described to influence an immunological response and affect innate and adaptive immunity alike [259]. It impacts apparition of autoimmune disease but also responses to infectious diseases. Furthermore, this influence changes over the course of life [259].

A recent review of current knowledge on sex difference of innate immune cells during respiratory virus infection showed a variety of receptors levels depending on cell subset and tissue localization [260]. Furthermore, they may act directly to promote or reduce cell function but also can act indirectly by modulating non-immune cell responses [260].

4.5. Genetic Susceptibility

Clinical aspects of COVID-19 disease are highly variable ranging from asymptomatic to life-threatening multi-organ failure disease. Differences in host genetic susceptibility may explain part of those differences in response to viral infection [261]. Host genetic polymorphisms have been associated with clinical severity in viruses [262,263]. During the SARS-CoV outbreak, HLA [264] and ABO [265] groups have been associated with disease severity. Using a genome-wide association study during the SARS-CoV-2 pandemic, HLA risk polymorphisms were described [261,266]. A susceptibility locus at chromosome 3p21.31 (spanning SLC6A20, LZTFL1, CCR9, FYCO1, CXCR6 and XCR1 genes) has notably been observed [266]. The ABO group seems to be implicated with a lesser risk of infection in the O group and higher risk in the A group [266–268]. Further studies may bring new genetic susceptibility association.

5. Immunotherapy

No antiviral therapy is available for treatment of COVID-19. Vaccines are under intensive development, and numerous clinical trials have been initiated, this could be the subject of a full-fledged review. For this reason, we will focus on SARS-CoV-2 management due to immunotherapy.

5.1. Antibody-Based Therapy

The first approach would be to use an old trick (i.e., serum therapy or serotherapy) invented by Emil Behring, more than 100 years ago, to prevent diphtheria. The purpose is to use serum from individuals who recovered from COVID-19 to treat suffering patients, the recovered serum containing neutralizing antibodies directed against SARS-CoV-2 creating passive immunity against the virus. Serotherapy, intravenous Ig (IVIg) or therapeutic plasma exchange (TPE) has been mentioned by several teams [269–271] and could be envisaged in prophylaxis or treatment, even if prophylactic injection or injection early after symptoms onset give better results than later injection [272,273]. Unlike vaccine therapy, serotherapy gives an immediate but short-lasting immunity (from weeks to months according to amount and composition) to susceptible persons. Specific antibodies are essential in viral clearance. Thus, convalescent plasma use may bring direct antiviral effect. Additionally, serotherapy has immunomodulatory effects that can be helpful in severe COVID-19 [274,275]. This solution has been used during the SARS-CoV outbreak and showed good results [276,277]. This therapy needs to be evaluated by clinical trials, taking in account all the challenges this practice could be facing [278]. Notably the potential risks could be: infection with another pathogen due to injection, reaction with serum components, ADE as a consequence of subneutralizing antibodies could thus facilitating entry

of SARS-CoV-2 in cells [269]. Preliminary studies in severe cases show a reduction of mortality after convalescent plasma use [279] and need to be further explored.

Polyvalent IVIg, another blood derived product, does not contain neutralizing antibodies against SARS-CoV-2 and preparation/availability of specific IVIg from convalescent donor may take time [274, 280]. Efficacy of IVIg during SARS-CoV has been variable [280]. Recent clinical trials seem to show an efficacy of high-dose IVIg in severe patients during COVID-19 [281,282]. Additionally, IVIg has been useful to treat autoimmune complication due to immunomodulatory effects [283,284].

As shown in sepsis, plasmapheresis was evoked as adjunctive treatment in severe COVID-19 [271, 285] to control the dysregulated immune response but its efficacy is still under question [286,287]. A recent case series showed improved outcomes after plasmapheresis [288]. Additionally, it has been proposed to use convalescent plasma for a better efficacy of plasmapheresis [289]. Therapeutic evaluation through randomized trials is still needed.

Another aspect of antibody-based therapy could be the use of recombinant antibody targeting spike protein of SARS-CoV-2. Several antibodies have been described to target SARS-CoV-2 S. CR3022, which was initially isolated from a SARS-CoV convalescent patient showed ability to cross-react with a highly conserved cryptic epitope of S [20]. 47D11 showed the same ability [290]. Additionally, immunoglobulin fragment F(ab')₂ against RBD produced in horses exhibited a potent capacity to neutralize SARS-CoV-2 in mice [291]. Similarly, 2B04 a murine monoclonal antibody that binds RBD showed a potent neutralization of SARS-CoV-2 on the mouse model of infection, reducing weight loss and viral burden [292]. Of further note, a recombinant extracellular domain of ACE2 fused to the Fc region of human IgG1 (called ACE2-Ig) showed high affinity for SARS-CoV-2 RBD, and could be considered for treatment [293]. Interestingly, Gammunex[®] and Flebogamma[®], which are currently available polyvalent IVIg, showed cross-reactivity with different coronaviruses, including SARS-CoV-2 [294]. Recently, the risk of escape mutant generation was raised under individual Spike-specific antibody selective pressure in vitro. This was prevented due to an antibody cocktail, against two non-overlapping regions of SARS-CoV-2 spike protein, which represents a therapeutic avenue limiting emergence of escape mutants and subsequent loss of drug efficacy [295].

5.2. Immunomodulators

A viable therapeutic treatment against COVID-19 is urgently needed. Drug repositioning is a fast way to produce therapeutic treatment. Numerous trials assessing antiviral or immunomodulatory efficacy of different treatments are ongoing [296].

An initial focus has been made on hydroxychloroquine, a derivative of chloroquine. Hydroxychloroquine is a known antimalarial and immunomodulatory molecule actually used for treatment during autoimmune diseases such as systemic lupus erythematosus (SLE). It acts by increasing pH in endosomes thus interfering with the antigen processing of antigen presenting cells (APC) [297]. An antiviral effect of chloroquine on both entry and post-entry stages of SARS-CoV-2 infection has been described in vitro, which could add to its immunomodulatory effect in vivo [298]. Potential mechanisms are not fully understood. Presumably, the increase of pH in endosomes and drug accumulation in lysosomes prevent viral entry and transport [299]. Furthermore, an antiviral action during SARS-CoV infection was shown by interfering with the terminal glycosylation of ACE-2 [300] and glycosylation of viral particles [301]. A review of clinical trials and cohort study of hydroxychloroquine showed conflicting results on efficacy and viral clearance [302–304]. Adverse events of hydroxychloroquine are long known. The most serious adverse events are ocular (retinopathy) following chronic exposition, cardiovascular (restrictive or dilated cardiomyopathy and conduction abnormalities), cutaneous (alopecia, pruritus, photosensitivity and skin eruption), neurologic (headache, dizziness, vertigo, convulsion and polyneuropathy), hepatic (abnormal liver function and fulminant hepatic failure) and gastrointestinal (diarrhea, anorexia, nausea and vomiting) [297,305]. In regard to the use of hydroxychloroquine during COVID-19, studies seem to show a relatively safe profile [299,306].

Its efficacy being still not demonstrated, it was removed from treatment guidelines until further studies [307,308].

Systemic corticosteroids have a broad-spectrum immunosuppressive activity. In the context of exacerbated inflammation as we described in SARS-CoV-2, they may be of benefit. Thus, clinicians tend to use it in most critically ill patients. However, such treatment was already used during SARS and MERS outbreaks, and led to delayed viral clearance and detrimental secondary outcomes, such as a prolonged length of stay in intensive care units or bacterial/fungal infections [309,310]. Similar data have been emphasized for SARS-CoV-2 in moderate disease with no clear benefit of corticosteroids use, more adverse outcomes and delayed viral clearance [311–313]. However, benefits for a precise corticosteroids therapy in severe COVID-19 patients either pulse corticosteroids or dexamethasone seems beneficial [314–316]. Therefore, such therapy could be of use rather at a late stage of ARDS.

The uncontrolled cytokine release in severe patients has been a major concern of therapeutic trials. Anti-cytokine therapy has been used in this condition (anti-IL-6, anti-TNF- α and anti-IL-1) and numerous clinical trials are still ongoing but a few showed promising results [317,318].

IL-6 is one of the most reported cytokines in COVID-19 pathology, notably in severe patients exhibiting higher serum levels than mild cases. Thus, targeting its signaling is thought to be a therapy of choice but at this time variable results are reported and there is no recommendation to use it in routine owing to limited efficacy evidence [304]. To answer this question a phase II trial has been approved with 330 patients using tocilizumab, an anti-human IL-6 receptor blocking monoclonal antibody [319]. Of note, it has been reported that the tocilizumab effect does not compromise at the same time the antiviral immunity in COVID-19 patients [320].

Granulocyte-macrophage colony-stimulating factor (GM-CSF) expression is also known to be upregulated and participate to hyperinflammation in patients suffering from COVID-19 [146,214,219]. Mavrilimumab is a human monoclonal antibody used in rheumatoid arthritis, which binds GM-CSF receptor α and disrupts its downstream signaling, thus blocking GM-CSF inflammatory activity [321]. This monoclonal antibody showed promising preliminary data, when used in addition to standard management [322]. Patients treated with mavrilimumab presented greater and faster improvement than the control group [322]. However, these data need to be reproduced and confirmed on a larger cohort and multicentric, double-blind, randomized, placebo-controlled studies.

COVID-19 patients exert a delayed IFN type I response leading to an exacerbated secondary cytokine response, responsible for disease severity. Supporting this, type I IFN could be an interesting treatment. Lokugamage et al. showed that in vitro SARS-CoV-2 is more sensitive to type I IFN than SARS-CoV. Regarding these results, they suggest IFN administration as a potential treatment [323,324].

IL-1 is a major actor of uncontrolled cytokine release during severe COVID-19 [318]. Anti-IL-1 therapy by anakinra was shown to be beneficial during severe sepsis [325]. During SARS-CoV-2, anakinra treatment improved the clinical outcome and reduced mortality [304,326].

Complement is the first line of defense during infection. As aforementioned, C5a is responsible for PMN recruitment, and thus probably participates to pulmonary injury during SARS-CoV-2 infection. Eculizumab is a monoclonal antibody that binds C5, hence inhibiting C5a and C5b release, as well as the membrane attack complex formation. This monoclonal antibody is predicted to be a potential therapeutic approach [327], according to what has been explored for MERS-CoV in animal models [157].

Clathrin-mediated endocytosis is a possible SARS-CoV-2 way of cell entry and is regulated by members of the numb-associated kinase (NAK) family [325]. Janus kinase (JAK) inhibitors, notably baricitinib used in rheumatoid arthritis, have been evoked as potential therapeutics during COVID-19 through inhibition of the NAK family [325,328]. Their anti-inflammatory effect may be beneficial in reducing cytokine release in severe patients or detrimental by delaying the interferon response [318,325]. Results of case report and small cohort studies seem encouraging with an improvement of moderate to severe cases and need to be pursued [329–331].

5.3. Stem Cell-Based Therapy

Mesenchymal stem cells (MSC) are known to have immunoregulatory activities and are for this purpose used as an injected therapy in immune-mediated diseases. Based on these immunoregulatory activities and the supposed pathogenesis of COVID-19, MSC or MSC-secretome injection have been envisaged as treatment by several teams [332–336]. Of note, unlike antibody-based therapy, MSC can target at the same time different cytokines, notably due to their diverse secretome, making these cells a therapy of choice [332]. Thus, it appears that injection of ACE2–MSCs improved the outcomes of seven enrolled COVID-19 patients, mainly through their immunomodulating function [333], leading to inflammation markers reduction [336]. Nonetheless, these experiments were conducted on a very limited number of patients and the statement established should be reconfirmed on a larger cohort.

Author Contributions: Conceptualization, G.L. and D.V.; writing—original draft preparation, G.L. and D.V.; writing—review and editing, G.L., D.V., É.F., F.A.-P., X.G., E.N., L.R. and P.G. All authors have read and agreed to the published version of the manuscript.

Funding: This research received no external funding.

Acknowledgments: Figures were created with [Biorender.com](https://biorender.com).

Conflicts of Interest: The authors declare no conflict of interest.

References

- Dong, E.; Du, H.; Gardner, L. An interactive web-based dashboard to track COVID-19 in real time. *Lancet Infect. Dis.* **2020**, *20*, 533–534. [[CrossRef](#)]
- Chen, G.; Wu, D.; Guo, W.; Cao, Y.; Huang, D.; Wang, H.; Wang, T.; Zhang, X.; Chen, H.; Yu, H.; et al. Clinical and immunological features of severe and moderate coronavirus disease 2019. *J. Clin. Investig.* **2020**. [[CrossRef](#)] [[PubMed](#)]
- Yang, J.; Zheng, Y.; Gou, X.; Pu, K.; Chen, Z.; Guo, Q.; Ji, R.; Wang, H.; Wang, Y.; Zhou, Y. Prevalence of comorbidities and its effects in patients infected with SARS-CoV-2: A systematic review and meta-analysis. *Int. J. Infect. Dis.* **2020**, *94*, 91–95. [[CrossRef](#)] [[PubMed](#)]
- Rothan, H.A.; Byrareddy, S.N. The epidemiology and pathogenesis of coronavirus disease (COVID-19) outbreak. *J. Autoimmun.* **2020**, *109*, 102433. [[CrossRef](#)]
- Mousavizadeh, L.; Ghasemi, S. Genotype and phenotype of COVID-19: Their roles in pathogenesis. *J. Microbiol. Immunol. Infect.* **2020**. [[CrossRef](#)]
- Lu, R.; Zhao, X.; Li, J.; Niu, P.; Yang, B.; Wu, H.; Wang, W.; Song, H.; Huang, B.; Zhu, N.; et al. Genomic characterisation and epidemiology of 2019 novel coronavirus: Implications for virus origins and receptor binding. *Lancet* **2020**, *395*, 565–574. [[CrossRef](#)]
- Tang, X.; Wu, C.; Li, X.; Song, Y.; Yao, X.; Wu, X.; Duan, Y.; Zhang, H.; Wang, Y.; Qian, Z.; et al. On the origin and continuing evolution of SARS-CoV-2. *Nat. Sci. Rev.* **2020**. [[CrossRef](#)]
- Wu, F.; Zhao, S.; Yu, B.; Chen, Y.-M.; Wang, W.; Song, Z.-G.; Hu, Y.; Tao, Z.-W.; Tian, J.-H.; Pei, Y.-Y.; et al. A new coronavirus associated with human respiratory disease in China. *Nature* **2020**, *579*, 265–269. [[CrossRef](#)]
- Zhou, P.; Yang, X.-L.; Wang, X.-G.; Hu, B.; Zhang, L.; Zhang, W.; Si, H.-R.; Zhu, Y.; Li, B.; Huang, C.-L.; et al. A pneumonia outbreak associated with a new coronavirus of probable bat origin. *Nature* **2020**, *579*, 270–273. [[CrossRef](#)]
- Knipe, D.M.; Howley, P.M. *Fields Virology*; Lippincott Williams & Wilkins Health: Philadelphia, PA, USA, 2013.
- Bos, E.C.W.; Luytjes, W.; Meulen, H.V.D.; Koerten, H.K.; Spaan, W.J.M. The Production of Recombinant Infectious DI-Particles of a Murine Coronavirus in the Absence of Helper Virus. *Virology* **1996**, *218*, 52–60. [[CrossRef](#)]
- Vennema, H.; Godeke, G.J.; Rossen, J.W.; Voorhout, W.F.; Horzinek, M.C.; Opstelten, D.J.; Rottier, P.J. Nucleocapsid-independent assembly of coronavirus-like particles by co-expression of viral envelope protein genes. *EMBO J.* **1996**, *15*, 2020–2028. [[CrossRef](#)]

13. Nieto-Torres, J.L.; DeDiego, M.L.; Verdiá-Báguena, C.; Jimenez-Guardeño, J.M.; Regla-Nava, J.A.; Fernandez-Delgado, R.; Castaño-Rodríguez, C.; Alcaraz, A.; Torres, J.; Aguilella, V.M.; et al. Severe Acute Respiratory Syndrome Coronavirus Envelope Protein Ion Channel Activity Promotes Virus Fitness and Pathogenesis. *PLoS Pathog.* **2014**, *10*, e1004077. [[CrossRef](#)] [[PubMed](#)]
14. Walls, A.C.; Park, Y.-J.; Tortorici, M.A.; Wall, A.; McGuire, A.T.; Veesler, D. Structure, Function, and Antigenicity of the SARS-CoV-2 Spike Glycoprotein. *Cell* **2020**, *181*, 281–292. [[CrossRef](#)] [[PubMed](#)]
15. Hoffmann, M.; Kleine-Weber, H.; Schroeder, S.; Krüger, N.; Herrler, T.; Erichsen, S.; Schiergens, T.S.; Herrler, G.; Wu, N.-H.; Nitsche, A.; et al. SARS-CoV-2 Cell Entry Depends on ACE2 and TMPRSS2 and Is Blocked by a Clinically Proven Protease Inhibitor. *Cell* **2020**, *181*, 271–280. [[CrossRef](#)] [[PubMed](#)]
16. Letko, M.; Marzi, A.; Munster, V. Functional assessment of cell entry and receptor usage for SARS-CoV-2 and other lineage B betacoronaviruses. *Nat. Microbiol.* **2020**, *5*, 562–569. [[CrossRef](#)]
17. Ou, X.; Liu, Y.; Lei, X.; Li, P.; Mi, D.; Ren, L.; Guo, L.; Guo, R.; Chen, T.; Hu, J.; et al. Characterization of spike glycoprotein of SARS-CoV-2 on virus entry and its immune cross-reactivity with SARS-CoV. *Nat. Commun.* **2020**, *11*, 1620. [[CrossRef](#)]
18. Tai, W.; He, L.; Zhang, X.; Pu, J.; Voronin, D.; Jiang, S.; Zhou, Y.; Du, L. Characterization of the receptor-binding domain (RBD) of 2019 novel coronavirus: Implication for development of RBD protein as a viral attachment inhibitor and vaccine. *Cell Mol. Immunol.* **2020**. [[CrossRef](#)]
19. Wrapp, D.; Wang, N.; Corbett, K.S.; Goldsmith, J.A.; Hsieh, C.-L.; Abiona, O.; Graham, B.S.; McLellan, J.S. Cryo-EM structure of the 2019-nCoV spike in the prefusion conformation. *Science* **2020**, *367*, 1260–1263. [[CrossRef](#)]
20. Yuan, M.; Wu, N.C.; Zhu, X.; Lee, C.-C.D.; So, R.T.Y.; Lv, H.; Mok, C.K.P.; Wilson, I.A. A highly conserved cryptic epitope in the receptor-binding domains of SARS-CoV-2 and SARS-CoV. *Science* **2020**, *368*, 630–633. [[CrossRef](#)]
21. Peng, Q.; Peng, R.; Yuan, B.; Zhao, J.; Wang, M.; Wang, X.; Wang, Q.; Sun, Y.; Fan, Z.; Qi, J.; et al. Structural and biochemical characterization of nsp12-nsp7-nsp8 core polymerase complex from COVID-19 virus. *Microbiology* **2020**, *31*, 107774.
22. Kim, J.Y.; Ko, J.-H.; Kim, Y.; Kim, Y.-J.; Kim, J.-M.; Chung, Y.-S.; Kim, H.M.; Han, M.-G.; Kim, S.Y.; Chin, B.S. Viral Load Kinetics of SARS-CoV-2 Infection in First Two Patients in Korea. *J. Korean Med. Sci.* **2020**, *35*, e86. [[CrossRef](#)] [[PubMed](#)]
23. Zhang, L.; Lin, D.; Sun, X.; Curth, U.; Drosten, C.; Sauerhering, L.; Becker, S.; Rox, K.; Hilgenfeld, R. Crystal structure of SARS-CoV-2 main protease provides a basis for design of improved α -ketoamide inhibitors. *Science* **2020**, *368*, 409–412. [[CrossRef](#)] [[PubMed](#)]
24. Wu, C.; Liu, Y.; Yang, Y.; Zhang, P.; Zhong, W.; Wang, Y.; Wang, Q.; Xu, Y.; Li, M.; Li, X.; et al. Analysis of therapeutic targets for SARS-CoV-2 and discovery of potential drugs by computational methods. *Acta Pharm. Sin. B* **2020**, *10*, 766–788. [[CrossRef](#)] [[PubMed](#)]
25. Wang, K.; Chen, W.; Zhou, Y.-S.; Lian, J.-Q.; Zhang, Z.; Du, P.; Gong, L.; Zhang, Y.; Cui, H.-Y.; Geng, J.-J.; et al. SARS-CoV-2 invades host cells via a novel route: CD147-spike protein. *Microbiology* **2020**. [[CrossRef](#)]
26. Baranov, P.V.; Henderson, C.M.; Anderson, C.B.; Gesteland, R.F.; Atkins, J.F.; Howard, M.T. Programmed ribosomal frameshifting in decoding the SARS-CoV genome. *Virology* **2005**, *332*, 498–510. [[CrossRef](#)]
27. Knoops, K.; Kikkert, M.; van den Worm, S.H.E.; Zevenhoven-Dobbe, J.C.; van der Meer, Y.; Koster, A.J.; Mommaas, A.M.; Snijder, E.J. SARS-Coronavirus Replication Is Supported by a Reticulovesicular Network of Modified Endoplasmic Reticulum. *PLOS Biol.* **2008**, *6*, e226. [[CrossRef](#)]
28. Ogando, N.S.; Dalebout, T.J.; Zevenhoven-Dobbe, J.C.; Limpens, R.W.; van der Meer, Y.; Caly, L.; Druce, J.; de Vries, J.J.C.; Kikkert, M.; Bárcena, M.; et al. SARS-coronavirus-2 replication in Vero E6 cells: Replication kinetics, rapid adaptation and cytopathology. *Microbiology* **2020**. [[CrossRef](#)]
29. Sethna, P.B.; Hung, S.L.; Brian, D.A. Coronavirus subgenomic minus-strand RNAs and the potential for mRNA replicons. *Nat. Acad. Sci.* **1989**, *86*, 5626–5630. [[CrossRef](#)]
30. Masters, P.S. The Molecular Biology of Coronaviruses. In *Advances in Virus Research*; Elsevier: Amsterdam, The Netherlands, 2006; Volume 66, pp. 193–292.
31. Fischer, F.; Stegen, C.F.; Masters, P.S.; Samsonoff, W.A. Analysis of Constructed E Gene Mutants of Mouse Hepatitis Virus Confirms a Pivotal Role for E Protein in Coronavirus Assembly. *J. Virol.* **1998**, *72*, 7885–7894. [[CrossRef](#)]

32. Chu, H.; Chan, J.F.-W.; Yuen, T.T.-T.; Shuai, H.; Yuan, S.; Wang, Y.; Hu, B.; Yip, C.C.-Y.; Tsang, J.O.-L.; Huang, X.; et al. Comparative tropism, replication kinetics, and cell damage profiling of SARS-CoV-2 and SARS-CoV with implications for clinical manifestations, transmissibility, and laboratory studies of COVID-19: An observational study. *Lancet Microbe* **2020**, *1*, e14–e23. [[CrossRef](#)]
33. Schifanella, L.; Anderson, J.L.; Galli, M.; Corbellino, M.; Lai, A.; Wieking, G.; Grzywacz, B.; Klatt, N.R.; Haase, A.T.; Schacker, T.W. Massive viral replication and cytopathic effects in early COVID-19 pneumonia. *arXiv* **2020**, arXiv:2005.00004.
34. Ghinai, I.; McPherson, T.D.; Hunter, J.C.; Kirking, H.L.; Christiansen, D.; Joshi, K.; Rubin, R.; Morales-Estrada, S.; Black, S.R.; Pacilli, M.; et al. First known person-to-person transmission of severe acute respiratory syndrome coronavirus 2 (SARS-CoV-2) in the USA. *Lancet* **2020**, *395*, 1137–1144. [[CrossRef](#)]
35. Han, Y.; Yang, H. The transmission and diagnosis of 2019 novel coronavirus infection disease (COVID-19): A Chinese perspective. *J. Med. Virol.* **2020**, *92*, 639–644. [[CrossRef](#)] [[PubMed](#)]
36. Chan, J.F.-W.; Zhang, A.J.; Yuan, S.; Poon, V.K.-M.; Chan, C.C.-S.; Lee, A.C.-Y.; Chan, W.-M.; Fan, Z.; Tsoi, H.-W.; Wen, L.; et al. Simulation of the clinical and pathological manifestations of Coronavirus Disease 2019 (COVID-19) in golden Syrian hamster model: Implications for disease pathogenesis and transmissibility. *Clin. Infect. Dis.* **2020**. [[CrossRef](#)]
37. Yeo, C.; Kaushal, S.; Yeo, D. Enteric involvement of coronaviruses: Is faecal–oral transmission of SARS-CoV-2 possible? *Lancet Gastroenterol. Hepatol.* **2020**, *5*, 335–337. [[CrossRef](#)]
38. Gu, J.; Han, B.; Wang, J. COVID-19: Gastrointestinal Manifestations and Potential Fecal–Oral Transmission. *Gastroenterology* **2020**. [[CrossRef](#)]
39. Napoli, P.E.; Nioi, M.; d’Aloja, E.; Fossarello, M. The Ocular Surface and the Coronavirus Disease 2019: Does a Dual ‘Ocular Route’ Exist? *J. Clin. Med.* **2020**, *9*, 1269. [[CrossRef](#)]
40. Zou, X.; Chen, K.; Zou, J.; Han, P.; Hao, J.; Han, Z. Single-cell RNA-seq data analysis on the receptor ACE2 expression reveals the potential risk of different human organs vulnerable to 2019-nCoV infection. *Front. Med.* **2020**. [[CrossRef](#)]
41. Muus, C.; Luecken, M.D.; Eraslan, G.; Waghray, A.; Heimberg, G.; Sikkema, L.; Kobayashi, Y.; Vaishnav, E.D.; Subramanian, A.; Smilie, C.; et al. Integrated analyses of single-cell atlases reveal age, gender, and smoking status associations with cell type-specific expression of mediators of SARS-CoV-2 viral entry and highlights inflammatory programs in putative target cells. *Bioinformatics* **2020**. [[CrossRef](#)]
42. Sungnak, W.; Huang, N.; Bécavin, C.; Berg, M.; Queen, R.; Litvinukova, M.; Talavera-López, C.; Maatz, H.; Reichart, D.; Sampaziotis, F.; et al. SARS-CoV-2 entry factors are highly expressed in nasal epithelial cells together with innate immune genes. *Nat. Med.* **2020**, *26*, 681–687. [[CrossRef](#)]
43. Kuba, K.; Imai, Y.; Rao, S.; Gao, H.; Guo, F.; Guan, B.; Huan, Y.; Yang, P.; Zhang, Y.; Deng, W.; et al. A crucial role of angiotensin converting enzyme 2 (ACE2) in SARS coronavirus–induced lung injury. *Nat. Med.* **2005**, *11*, 875–879. [[CrossRef](#)] [[PubMed](#)]
44. Imai, Y.; Kuba, K.; Rao, S.; Huan, Y.; Guo, F.; Guan, B.; Yang, P.; Sarao, R.; Wada, T.; Leong-Poi, H.; et al. Angiotensin-converting enzyme 2 protects from severe acute lung failure. *Nature* **2005**, *436*, 112–116. [[CrossRef](#)] [[PubMed](#)]
45. Lambert, D.W.; Yarski, M.; Warner, F.J.; Thornhill, P.; Parkin, E.T.; Smith, A.I.; Hooper, N.M.; Turner, A.J. Tumor Necrosis Factor- α Convertase (ADAM17) Mediates Regulated Ectodomain Shedding of the Severe-acute Respiratory Syndrome-Coronavirus (SARS-CoV) Receptor, Angiotensin-converting Enzyme-2 (ACE2). *J. Biol. Chem.* **2005**, *280*, 30113–30119. [[CrossRef](#)] [[PubMed](#)]
46. Haga, S.; Yamamoto, N.; Nakai-Murakami, C.; Osawa, Y.; Tokunaga, K.; Sata, T.; Yamamoto, N.; Sasazuki, T.; Ishizaka, Y. Modulation of TNF- α -converting enzyme by the spike protein of SARS-CoV and ACE2 induces TNF- α production and facilitates viral entry. *Proc. Natl. Acad. Sci. USA* **2008**, *105*, 7809–7814. [[CrossRef](#)]
47. Glowacka, I.; Bertram, S.; Herzog, P.; Pfefferle, S.; Steffen, I.; Muench, M.O.; Simmons, G.; Hofmann, H.; Kuri, T.; Weber, F.; et al. Differential Downregulation of ACE2 by the Spike Proteins of Severe Acute Respiratory Syndrome Coronavirus and Human Coronavirus NL63. *J. Virol.* **2010**, *84*, 1198–1205. [[CrossRef](#)]
48. Jia, H.P.; Look, D.C.; Tan, P.; Shi, L.; Hickey, M.; Gakhar, L.; Chappell, M.C.; Wohlford-Lenane, C.; McCray, P.B. Ectodomain shedding of angiotensin converting enzyme 2 in human airway epithelia. *Am. J. Physiol.-Lung Cell. Mol. Physiol.* **2009**, *297*, L84–L96. [[CrossRef](#)]

49. Ruiz-Ortega, M.; Lorenzo, Ó.; Rupérez, M.; Blanco, J.; Egidio, J. Systemic Infusion of Angiotensin II into Normal Rats Activates Nuclear Factor- κ B and AP-1 in the Kidney: Role of AT1 and AT2 Receptors. *Am. J. Pathol.* **2001**, *158*, 1743–1756. [[CrossRef](#)]
50. Wolf, G.; Wenzel, U.; Burns, K.D.; Harris, R.C.; Stahl, R.A.K.; Thaiss, F. Angiotensin II activates nuclear transcription factor- κ B through AT1 and AT2 receptors. See Editorial by Luft, p. 2272. *Kidney Int.* **2002**, *61*, 1986–1995. [[CrossRef](#)]
51. Ruiz-Ortega, M.; Rupérez, M.; Esteban, V.; Egidio, J. Molecular mechanisms of angiotensin II-induced vascular injury. *Curr. Sci.* **2003**, *5*, 73–79. [[CrossRef](#)]
52. Xu, J.; Sriramula, S.; Xia, H.; Moreno-Walton, L.; Culicchia, F.; Domenig, O.; Poglitsch, M.; Lazartigues, E. Clinical Relevance and Role of Neuronal AT1 Receptors in ADAM17-Mediated ACE2 Shedding in Neurogenic Hypertension. *Circ. Res.* **2017**, *121*, 43–55. [[CrossRef](#)]
53. Heurich, A.; Hofmann-Winkler, H.; Gierer, S.; Liepold, T.; Jahn, O.; Pöhlmann, S. TMPRSS2 and ADAM17 Cleave ACE2 Differentially and Only Proteolysis by TMPRSS2 Augments Entry Driven by the Severe Acute Respiratory Syndrome Coronavirus Spike Protein. *J. Virol.* **2014**, *88*, 1293–1307. [[CrossRef](#)] [[PubMed](#)]
54. Wang, S.; Guo, F.; Liu, K.; Wang, H.; Rao, S.; Yang, P.; Jiang, C. Endocytosis of the receptor-binding domain of SARS-CoV spike protein together with virus receptor ACE2. *Virus Res.* **2008**, *136*, 8–15. [[CrossRef](#)] [[PubMed](#)]
55. Ziegler, C.G.K.; Allon, S.J.; Nyquist, S.K.; Mbanjo, I.M.; Miao, V.N.; Tzouanas, C.N.; Cao, Y.; Yousif, A.S.; Bals, J.; Hauser, B.M.; et al. SARS-CoV-2 receptor ACE2 is an interferon-stimulated gene in human airway epithelial cells and is detected in specific cell subsets across tissues. *Cell* **2020**. [[CrossRef](#)] [[PubMed](#)]
56. Han, D.P.; Lohani, M.; Cho, M.W. Specific Asparagine-Linked Glycosylation Sites Are Critical for DC-SIGN- and L-SIGN-Mediated Severe Acute Respiratory Syndrome Coronavirus Entry. *J. Virol.* **2007**, *81*, 12029–12039. [[CrossRef](#)] [[PubMed](#)]
57. Jeffers, S.A.; Tusell, S.M.; Gillim-Ross, L.; Hemmila, E.M.; Achenbach, J.E.; Babcock, G.J.; Thomas, W.D.; Thackray, L.B.; Young, M.D.; Mason, R.J.; et al. CD209L (L-SIGN) is a receptor for severe acute respiratory syndrome coronavirus. *Proc. Natl. Acad. Sci. USA* **2004**, *101*, 15748–15753. [[CrossRef](#)] [[PubMed](#)]
58. Yang, Z.-Y.; Huang, Y.; Ganesh, L.; Leung, K.; Kong, W.-P.; Schwartz, O.; Subbarao, K.; Nabel, G.J. pH-Dependent Entry of Severe Acute Respiratory Syndrome Coronavirus Is Mediated by the Spike Glycoprotein and Enhanced by Dendritic Cell Transfer through DC-SIGN. *J. Virol.* **2004**, *78*, 5642–5650. [[CrossRef](#)]
59. Chen, Z.; Mi, L.; Xu, J.; Yu, J.; Wang, X.; Jiang, J.; Xing, J.; Shang, P.; Qian, A.; Li, Y.; et al. Function of HAb18G/CD147 in Invasion of Host Cells by Severe Acute Respiratory Syndrome Coronavirus. *J. Infect. Dis.* **2005**, *191*, 755–760. [[CrossRef](#)]
60. Pushkarsky, T.; Zybarth, G.; Dubrovsky, L.; Yurchenko, V.; Tang, H.; Guo, H.; Toole, B.; Sherry, B.; Bukrinsky, M. CD147 facilitates HIV-1 infection by interacting with virus-associated cyclophilin A. *Proc. Natl. Acad. Sci. USA* **2001**, *98*, 6360–6365. [[CrossRef](#)]
61. Watanabe, A.; Yoneda, M.; Ikeda, F.; Terao-Muto, Y.; Sato, H.; Kai, C. CD147/EMMPRIN Acts as a Functional Entry Receptor for Measles Virus on Epithelial Cells. *J. Virol.* **2010**, *84*, 4183–4193. [[CrossRef](#)]
62. Xiong, L.; Edwards, C.K.; Zhou, L. The Biological Function and Clinical Utilization of CD147 in Human Diseases: A Review of the Current Scientific Literature. *Int. J. Mol. Sci.* **2014**, *15*, 17411–17441. [[CrossRef](#)]
63. Yurchenko, V.; Constant, S.; Eisenmesser, E.; Bukrinsky, M. Cyclophilin–CD147 interactions: A new target for anti-inflammatory therapeutics. *Clin. Exp. Immunol.* **2010**, *160*, 305–317. [[CrossRef](#)] [[PubMed](#)]
64. Shilts, J.; Wright, G.J. No evidence for basigin/CD147 as a direct SARS-CoV-2 spike binding receptor. *bioRxiv* **2020**. [[CrossRef](#)]
65. Softic, L.; Brillet, R.; Berry, F.; Ahnou, N.; Nevers, Q.; Morin-Dewaele, M.; Hamadat, S.; Bruscella, P.; Fourati, S.; Pawlotsky, J.-M.; et al. Inhibition of SARS-CoV-2 Infection by the Cyclophilin Inhibitor Alisporivir (Debio 025). *Antimicrob. Agents Chemother.* **2020**, *64*. [[CrossRef](#)] [[PubMed](#)]
66. Yu, Y.T.-C.; Chien, S.-C.; Chen, I.-Y.; Lai, C.-T.; Tsay, Y.-G.; Chang, S.C.; Chang, M.-F. Surface vimentin is critical for the cell entry of SARS-CoV. *J. Biomed. Sci.* **2016**, *23*, 14. [[CrossRef](#)] [[PubMed](#)]
67. Daly, J.L.; Simonetti, B.; Antón-Plágaro, C.; Williamson, M.K.; Shoemark, D.K.; Simón-Gracia, L.; Klein, K.; Bauer, M.; Hollandi, R.; Greber, U.F.; et al. Neuropilin-1 is a host factor for SARS-CoV-2 infection. *bioRxiv* **2020**. [[CrossRef](#)]

68. Cantuti-Castelvetri, L.; Ojha, R.; Pedro, L.D.; Djannatian, M.; Franz, J.; Kuivanen, S.; Kallio, K.; Kaya, T.; Anastasina, M.; Smura, T.; et al. Neuropilin-1 facilitates SARS-CoV-2 cell entry and provides a possible pathway into the central nervous system. *bioRxiv* **2020**. [[CrossRef](#)]
69. García, S.R.; Deprez, M.; Lebrigand, K.; Cavard, A.; Paquet, A.; Arguel, M.-J.; Magnone, V.; Truchi, M.; Caballero, I.; Leroy, S.; et al. Novel dynamics of human mucociliary differentiation revealed by single-cell RNA sequencing of nasal epithelial cultures. *Development* **2019**, *146*. [[CrossRef](#)]
70. Zou, L.; Ruan, F.; Huang, M.; Liang, L.; Huang, H.; Hong, Z.; Yu, J.; Kang, M.; Song, Y.; Xia, J.; et al. SARS-CoV-2 Viral Load in Upper Respiratory Specimens of Infected Patients. *N. Engl. J. Med.* **2020**, *382*, 1177–1179. [[CrossRef](#)]
71. Lechien, J.R.; Chiesa-Estomba, C.M.; De Siati, D.R.; Horoi, M.; Le Bon, S.D.; Rodriguez, A.; Dequanter, D.; Blecic, S.; El Afia, F.; Distinguin, L.; et al. Olfactory and gustatory dysfunctions as a clinical presentation of mild-to-moderate forms of the coronavirus disease (COVID-19): A multicenter European study. *Eur. Arch. Otorhinolaryngol.* **2020**. [[CrossRef](#)]
72. Di Carlo, D.T.; Montemurro, N.; Petrella, G.; Siciliano, G.; Ceravolo, R.; Perrini, P. Exploring the clinical association between neurological symptoms and COVID-19 pandemic outbreak: A systematic review of current literature. *J. Neurol.* **2020**. [[CrossRef](#)]
73. Rocke, J.; Hopkins, C.; Philpott, C.; Kumar, N. Is loss of sense of smell a diagnostic marker in COVID-19: A Systematic Review and Meta-analysis. *Clin. Otolaryngol.* **2020**. [[CrossRef](#)] [[PubMed](#)]
74. Butowt, R.; Bilinska, K. SARS-CoV-2: Olfaction, Brain Infection, and the Urgent Need for Clinical Samples Allowing Earlier Virus Detection. *ACS Chem. Neurosci.* **2020**. [[CrossRef](#)] [[PubMed](#)]
75. Brann, D.H.; Tsukahara, T.; Weinreb, C.; Lipovsek, M.; den Berge, K.V.; Gong, B.; Chance, R.; Macaulay, I.C.; Chou, H.-J.; Fletcher, R.B.; et al. Non-neuronal expression of SARS-CoV-2 entry genes in the olfactory system suggests mechanisms underlying COVID-19-associated anosmia. *Sci. Adv.* **2020**, *6*. [[CrossRef](#)]
76. Guan, W.; Ni, Z.; Hu, Y.; Liang, W.; Ou, C.; He, J.; Liu, L.; Shan, H.; Lei, C.; Hui, D.S.C.; et al. Clinical Characteristics of Coronavirus Disease 2019 in China. *N. Engl. J. Med.* **2020**. [[CrossRef](#)] [[PubMed](#)]
77. Lai, C.-C.; Liu, Y.H.; Wang, C.-Y.; Wang, Y.-H.; Hsueh, S.-C.; Yen, M.-Y.; Ko, W.-C.; Hsueh, P.-R. Asymptomatic carrier state, acute respiratory disease, and pneumonia due to severe acute respiratory syndrome coronavirus 2 (SARS-CoV-2): Facts and myths. *J. Microbiol. Immunol. Infect.* **2020**. [[CrossRef](#)]
78. Wang, D.; Hu, B.; Hu, C.; Zhu, F.; Liu, X.; Zhang, J.; Wang, B.; Xiang, H.; Cheng, Z.; Xiong, Y.; et al. Clinical Characteristics of 138 Hospitalized Patients with 2019 Novel Coronavirus–Infected Pneumonia in Wuhan, China. *JAMA* **2020**, *323*, 1061. [[CrossRef](#)]
79. Gattinoni, L.; Coppola, S.; Cressoni, M.; Busana, M.; Rossi, S.; Chiumello, D. COVID-19 Does Not Lead to a “Typical” Acute Respiratory Distress Syndrome. *Am. J. Respir. Crit. Care Med.* **2020**, *201*, 1299–1300. [[CrossRef](#)]
80. Ackermann, M.; Verleden, S.E.; Kuehnel, M.; Haverich, A.; Welte, T.; Laenger, F.; Vanstapel, A.; Werlein, C.; Stark, H.; Tzankov, A.; et al. Pulmonary Vascular Endothelialitis, Thrombosis, and Angiogenesis in Covid-19. *N. Engl. J. Med.* **2020**, *383*, 120–128. [[CrossRef](#)]
81. Tian, S.; Xiong, Y.; Liu, H.; Niu, L.; Guo, J.; Liao, M.; Xiao, S.-Y. Pathological study of the 2019 novel coronavirus disease (COVID-19) through postmortem core biopsies. *Mod. Pathol.* **2020**, *1–8*. [[CrossRef](#)]
82. Xu, Z.; Shi, L.; Wang, Y.; Zhang, J.; Huang, L.; Zhang, C.; Liu, S.; Zhao, P.; Liu, H.; Zhu, L.; et al. Pathological findings of COVID-19 associated with acute respiratory distress syndrome. *Lancet Respir. Med.* **2020**, *8*, 420–422. [[CrossRef](#)]
83. Copin, M.-C.; Parmentier, E.; Duburcq, T.; Poissy, J.; Mathieu, D.; Caplan, M.; Cousin, N.; Durand, A.; Goutay, J.; Kalioubie, A.E.; et al. Time to consider histologic pattern of lung injury to treat critically ill patients with COVID-19 infection. *Intensive Care Med.* **2020**. [[CrossRef](#)] [[PubMed](#)]
84. Barton, L.M.; Duval, E.J.; Stroberg, E.; Ghosh, S.; Mukhopadhyay, S. COVID-19 Autopsies, Oklahoma, USA. *Am. J. Clin. Pathol.* **2020**. [[CrossRef](#)] [[PubMed](#)]
85. Yao, X.H.; Li, T.Y.; He, Z.C.; Ping, Y.F.; Liu, H.W.; Yu, S.C.; Mou, H.M.; Wang, L.H.; Zhang, H.R.; Fu, W.J.; et al. A pathological report of three COVID-19 cases by minimally invasive autopsies. *Chin. J. Pathol.* **2020**, *49*, E009. [[CrossRef](#)]
86. Ingraham, N.E.; Barakat, A.G.; Reilkoff, R.; Bezdicek, T.; Schacker, T.; Chipman, J.G.; Tignanelli, C.J.; Puskarich, M.A. Understanding the Renin-Angiotensin-Aldosterone-SARS-CoV-Axis: A Comprehensive Review. *Eur. Respir. J.* **2020**. [[CrossRef](#)] [[PubMed](#)]

87. Wong, S.H.; Lui, R.N.; Sung, J.J. Covid-19 and the digestive system. *J. Gastroenterol. Hepatol.* **2020**. [[CrossRef](#)] [[PubMed](#)]
88. Xiao, F.; Tang, M.; Zheng, X.; Liu, Y.; Li, X.; Shan, H. Evidence for Gastrointestinal Infection of SARS-CoV-2. *Gastroenterology* **2020**. [[CrossRef](#)] [[PubMed](#)]
89. Wang, X.; Zhou, Y.; Jiang, N.; Zhou, Q.; Ma, W.-L. Persistence of intestinal SARS-CoV-2 infection in patients with COVID-19 leads to re-admission after pneumonia resolved. *Int. J. Infect. Dis.* **2020**, *95*, 433–435. [[CrossRef](#)] [[PubMed](#)]
90. Alsaad, K.O.; Hajeer, A.H.; Al Balwi, M.; Al Moaiqel, M.; Al Oudah, N.; Al Ajlan, A.; AlJohani, S.; Alsolamy, S.; Gmati, G.E.; Balkhy, H.; et al. Histopathology of Middle East respiratory syndrome coronavirus (MERS-CoV) infection—Clinicopathological and ultrastructural study. *Histopathology* **2018**, *72*, 516–524. [[CrossRef](#)] [[PubMed](#)]
91. Zhao, B.; Ni, C.; Gao, R.; Wang, Y.; Yang, L.; Wei, J.; Lv, T.; Liang, J.; Zhang, Q.; Xu, W.; et al. Recapitulation of SARS-CoV-2 Infection and Cholangiocyte Damage with Human Liver Organoids. *Cell Biol.* **2020**. [[CrossRef](#)]
92. Nishiga, M.; Wang, D.W.; Han, Y.; Lewis, D.B.; Wu, J.C. COVID-19 and cardiovascular disease: From basic mechanisms to clinical perspectives. *Nat. Rev. Cardiol.* **2020**, 1–16. [[CrossRef](#)]
93. Inciardi, R.M.; Lupi, L.; Zaccone, G.; Italia, L.; Raffo, M.; Tomasoni, D.; Cani, D.S.; Cerini, M.; Farina, D.; Gavazzi, E.; et al. Cardiac Involvement in a Patient with Coronavirus Disease 2019 (COVID-19). *JAMA Cardiol.* **2020**, *5*, 819–824. [[CrossRef](#)]
94. Puntmann, V.O.; Carerj, M.L.; Wieters, I.; Fahim, M.; Arendt, C.; Hoffmann, J.; Shchendrygina, A.; Escher, F.; Vasa-Nicotera, M.; Zeiher, A.M.; et al. Outcomes of Cardiovascular Magnetic Resonance Imaging in Patients Recently Recovered From Coronavirus Disease 2019 (COVID-19). *JAMA Cardiol.* **2020**. [[CrossRef](#)] [[PubMed](#)]
95. Oudit, G.Y.; Kassiri, Z.; Jiang, C.; Liu, P.P.; Poutanen, S.M.; Penninger, J.M.; Butany, J. SARS-coronavirus modulation of myocardial ACE2 expression and inflammation in patients with SARS. *Eur. J. Clin. Investig.* **2009**, *39*, 618–625. [[CrossRef](#)] [[PubMed](#)]
96. Alhogbani, T. Acute myocarditis associated with novel Middle East respiratory syndrome coronavirus. *Annal. Saudi Med.* **2016**, *36*, 78–80. [[CrossRef](#)] [[PubMed](#)]
97. Lindner, D.; Fitzek, A.; Bräuninger, H.; Aleshcheva, G.; Edler, C.; Meissner, K.; Scherschel, K.; Kirchhof, P.; Escher, F.; Schultheiss, H.-P.; et al. Association of Cardiac Infection with SARS-CoV-2 in Confirmed COVID-19 Autopsy Cases. *JAMA Cardiol.* **2020**. [[CrossRef](#)]
98. Bojkova, D.; Wagner, J.U.G.; Shumliakivska, M.; Aslan, G.S.; Saleem, U.; Hansen, A.; Luxán, G.; Günther, S.; Pham, M.D.; Krishnan, J.; et al. SARS-CoV-2 infects and induces cytotoxic effects in human cardiomyocytes. *bioRxiv* **2020**. [[CrossRef](#)]
99. Varga, Z.; Flammer, A.J.; Steiger, P.; Haberecker, M.; Andermatt, R.; Zinkernagel, A.S.; Mehra, M.R.; Schuepbach, R.A.; Ruschitzka, F.; Moch, H. Endothelial cell infection and endotheliitis in COVID-19. *Lancet* **2020**, *395*, 1417–1418. [[CrossRef](#)]
100. Teuwen, L.-A.; Geldhof, V.; Pasut, A.; Carmeliet, P. COVID-19: The vasculature unleashed. *Nat. Rev. Immunol.* **2020**, *20*, 389–391. [[CrossRef](#)]
101. Goshua, G.; Pine, A.B.; Meizlish, M.L.; Chang, C.-H.; Zhang, H.; Bahel, P.; Baluha, A.; Bar, N.; Bona, R.D.; Burns, A.J.; et al. Endotheliopathy in COVID-19-associated coagulopathy: Evidence from a single-centre, cross-sectional study. *Lancet Haematol.* **2020**, *7*, e575–e582. [[CrossRef](#)]
102. Glass, W.G.; Subbarao, K.; Murphy, B.; Murphy, P.M. Mechanisms of Host Defense following Severe Acute Respiratory Syndrome-Coronavirus (SARS-CoV) Pulmonary Infection of Mice. *J. Immunol.* **2004**, *173*, 4030–4039. [[CrossRef](#)]
103. Li, K.; Wohlford-Lenane, C.; Perlman, S.; Zhao, J.; Jewell, A.K.; Reznikov, L.R.; Gibson-Corley, K.N.; Meyerholz, D.K.; McCray, P.B. Middle East Respiratory Syndrome Coronavirus Causes Multiple Organ Damage and Lethal Disease in Mice Transgenic for Human Dipeptidyl Peptidase 4. *J. Infect. Dis.* **2016**, *213*, 712–722. [[CrossRef](#)] [[PubMed](#)]
104. Ding, Y.; He, L.; Zhang, Q.; Huang, Z.; Che, X.; Hou, J.; Wang, H.; Shen, H.; Qiu, L.; Li, Z.; et al. Organ distribution of severe acute respiratory syndrome (SARS) associated coronavirus (SARS-CoV) in SARS patients: Implications for pathogenesis and virus transmission pathways. *J. Pathol.* **2004**, *203*, 622–630. [[CrossRef](#)] [[PubMed](#)]

105. Xu, J.; Zhong, S.; Liu, J.; Li, L.; Li, Y.; Wu, X.; Li, Z.; Deng, P.; Zhang, J.; Zhong, N.; et al. Detection of Severe Acute Respiratory Syndrome Coronavirus in the Brain: Potential Role of the Chemokine Mig in Pathogenesis. *Clin. Infect. Dis.* **2005**, *41*, 1089–1096. [[CrossRef](#)] [[PubMed](#)]
106. Li, Y.; Bai, W.; Hashikawa, T. The neuroinvasive potential of SARS-CoV2 may play a role in the respiratory failure of COVID-19 patients. *J. Med. Virol.* **2020**, *92*, 552–555. [[CrossRef](#)]
107. Mao, L.; Jin, H.; Wang, M.; Hu, Y.; Chen, S.; He, Q.; Chang, J.; Hong, C.; Zhou, Y.; Wang, D.; et al. Neurologic Manifestations of Hospitalized Patients with Coronavirus Disease 2019 in Wuhan, China. *JAMA Neurol.* **2020**, *77*, 683–690. [[CrossRef](#)]
108. Yachou, Y.; El Idrissi, A.; Belapasov, V.; Ait Benali, S. Neuroinvasion, neurotropic, and neuroinflammatory events of SARS-CoV-2: Understanding the neurological manifestations in COVID-19 patients. *J. Neurol. Sci.* **2020**. [[CrossRef](#)]
109. Asadi-Pooya, A.A.; Simani, L. Central nervous system manifestations of COVID-19: A systematic review. *J. Neurol. Sci.* **2020**, *413*, 116832. [[CrossRef](#)]
110. Sedaghat, Z.; Karimi, N. Guillain Barre syndrome associated with COVID-19 infection: A case report. *J. Clin. Neurosci.* **2020**, *76*, 233–235. [[CrossRef](#)]
111. Zhao, H.; Shen, D.; Zhou, H.; Liu, J.; Chen, S. Guillain-Barré syndrome associated with SARS-CoV-2 infection: Causality or coincidence? *Lancet Neurol.* **2020**, *19*, 383–384. [[CrossRef](#)]
112. Diao, B.; Wang, C.; Wang, R.; Feng, Z.; Tan, Y.; Wang, H.; Wang, C.; Liu, L.; Liu, Y.; Liu, Y.; et al. Human Kidney is a Target for Novel Severe Acute Respiratory Syndrome Coronavirus 2 (SARS-CoV-2) Infection. *Infect. Dis.* **2020**. [[CrossRef](#)]
113. Fanelli, V.; Fiorentino, M.; Cantaluppi, V.; Gesualdo, L.; Stallone, G.; Ronco, C.; Castellano, G. Acute kidney injury in SARS-CoV-2 infected patients. *Crit. Care* **2020**, *24*, 155. [[CrossRef](#)] [[PubMed](#)]
114. Hirsch, J.S.; Ng, J.H.; Ross, D.W.; Sharma, P.; Shah, H.H.; Barnett, R.L.; Hazzan, A.D.; Fishbane, S.; Jhaveri, K.D.; Abate, M.; et al. Acute kidney injury in patients hospitalized with COVID-19. *Kidney Int.* **2020**, *98*, 209–218. [[CrossRef](#)] [[PubMed](#)]
115. Qian, J.-Y.; Wang, B.; Liu, B.-C. Acute Kidney Injury in the 2019 Novel Coronavirus Disease. *Kidney Dis.* **2020**, 1–6. [[CrossRef](#)] [[PubMed](#)]
116. Cummings, M.J.; Baldwin, M.R.; Abrams, D.; Jacobson, S.D.; Meyer, B.J.; Balough, E.M.; Aaron, J.G.; Claassen, J.; Rabbani, L.E.; Hastie, J.; et al. Epidemiology, clinical course, and outcomes of critically ill adults with COVID-19 in New York City: A prospective cohort study. *Lancet* **2020**, *395*, 1763–1770. [[CrossRef](#)]
117. Chen, Y.; Feng, Z.; Diao, B.; Wang, R.; Wang, G.; Wang, C.; Tan, Y.; Liu, L.; Wang, C.; Liu, Y.; et al. The Novel Severe Acute Respiratory Syndrome Coronavirus 2 (SARS-CoV-2) Directly Decimates Human Spleens and Lymph Nodes. *Infect. Dis.* **2020**. [[CrossRef](#)]
118. Fathi, N.; Rezaei, N. Lymphopenia in COVID-19: Therapeutic opportunities. *Cell Biol. Int.* **2020**. [[CrossRef](#)]
119. Dierckx, T.; Khouri, R.; Menezes, S.M.; Decanine, D.; Farre, L.; Bittencourt, A.; Vandamme, A.M.; Van Weyenbergh, J. IFN- β induces greater antiproliferative and proapoptotic effects and increased p53 signaling compared with IFN- α in PBMCs of Adult T-cell Leukemia/Lymphoma patients. *Blood Cancer J.* **2017**, *7*, e519. [[CrossRef](#)]
120. Simonnet, A.; Chetboun, M.; Poissy, J.; Raverdy, V.; Noulette, J.; Duhamel, A.; Labreuche, J.; Mathieu, D.; Pattou, F.; Jourdain, M. High prevalence of obesity in severe acute respiratory syndrome coronavirus-2 (SARS-CoV-2) requiring invasive mechanical ventilation. *Obesity* **2020**. [[CrossRef](#)]
121. Venkata, C.; Sampathkumar, P.; Afessa, B. Hospitalized Patients with 2009 H1N1 Influenza Infection: The Mayo Clinic Experience. *Mayo Clin. Proc.* **2010**, *85*, 798–805. [[CrossRef](#)]
122. Maier, H.E.; Lopez, R.; Sanchez, N.; Ng, S.; Gresh, L.; Ojeda, S.; Burger-Calderon, R.; Kuan, G.; Harris, E.; Balmaseda, A.; et al. Obesity Increases the Duration of Influenza A Virus Shedding in Adults. *Infect. Dis.* **2018**, *218*, 1378–1382. [[CrossRef](#)]
123. Kruglikov, I.L.; Scherer, P.E. The role of adipocytes and adipocyte-like cells in the severity of COVID-19 infections. *Obesity* **2020**. [[CrossRef](#)] [[PubMed](#)]
124. Guzik, T.J.; Skiba, D.S.; Touyz, R.M.; Harrison, D.G. The role of infiltrating immune cells in dysfunctional adipose tissue. *Cardiovasc. Res.* **2017**, *113*, 1009–1023. [[CrossRef](#)] [[PubMed](#)]
125. Ryan, P.M.; Caplice, N.M. Is Adipose Tissue a Reservoir for Viral Spread, Immune Activation and Cytokine Amplification in COVID-19. *Obesity* **2020**. [[CrossRef](#)] [[PubMed](#)]

126. Huang, C.; Wang, Y.; Li, X.; Ren, L.; Zhao, J.; Hu, Y.; Zhang, L.; Fan, G.; Xu, J.; Gu, X.; et al. Clinical features of patients infected with 2019 novel coronavirus in Wuhan, China. *Lancet* **2020**, *395*, 497–506. [[CrossRef](#)]
127. Lechien, J.R.; Chiesa-Estomba, C.M.; Place, S.; Laethem, Y.V.; Cabaraux, P.; Mat, Q.; Huet, K.; Plzak, J.; Horoi, M.; Hans, S.; et al. Clinical and Epidemiological Characteristics of 1,420 European Patients with mild-to-moderate Coronavirus Disease 2019. *J. Intern. Med.* **2020**. [[CrossRef](#)]
128. Li, M.-Y.; Li, L.; Zhang, Y.; Wang, X.-S. Expression of the SARS-CoV-2 cell receptor gene ACE2 in a wide variety of human tissues. *Infect. Dis. Poverty* **2020**, *9*, 45. [[CrossRef](#)]
129. Severin, R.; Arena, R.; Lavie, C.J.; Bond, S.; Phillips, S.A. Respiratory Muscle Performance Screening for Infectious Disease Management Following COVID-19: A Highly Pressurized Situation. *Am. J. Med.* **2020**. [[CrossRef](#)]
130. Prompetchara, E.; Chutitorn, K.; Tanapat, T. Immune responses in COVID-19 and potential vaccines: Lessons learned from SARS and MERS epidemic. *Asian Pac. J. Allergy Immunol.* **2020**. [[CrossRef](#)]
131. Channappanavar, R.; Perlman, S. Pathogenic human coronavirus infections: Causes and consequences of cytokine storm and immunopathology. *Semin. Immunopathol.* **2017**, *39*, 529–539. [[CrossRef](#)]
132. Dandekar, A.A.; Perlman, S. Immunopathogenesis of coronavirus infections: Implications for SARS. *Nat. Rev. Immunol.* **2005**, *5*, 917–927. [[CrossRef](#)]
133. De Wit, E.; van Doremalen, N.; Falzarano, D.; Munster, V.J. SARS and MERS: Recent insights into emerging coronaviruses. *Nat. Rev. Microbiol.* **2016**, *14*, 523–534. [[CrossRef](#)] [[PubMed](#)]
134. Li, G.; Fan, Y.; Lai, Y.; Han, T.; Li, Z.; Zhou, P.; Pan, P.; Wang, W.; Hu, D.; Liu, X.; et al. Coronavirus infections and immune responses. *J. Med. Virol.* **2020**, *92*, 424–432. [[CrossRef](#)] [[PubMed](#)]
135. Hadjadj, J.; Yatim, N.; Barnabei, L.; Corneau, A.; Boussier, J.; Pere, H.; Charbit, B.; Bondet, V.; Chenevier-Gobeaux, C.; Breillat, P.; et al. Impaired type I interferon activity and exacerbated inflammatory responses in severe Covid-19 patients. *Infect. Dis.* **2020**. [[CrossRef](#)]
136. Sa Ribero, M.; Jouvenet, N.; Dreux, M.; Nisole, S. Interplay between SARS-CoV-2 and the type I interferon response. *PLoS Pathog.* **2020**, *16*, e1008737. [[CrossRef](#)] [[PubMed](#)]
137. Chu, H.; Zhou, J.; Ho-Yin Wong, B.; Li, C.; Cheng, Z.-S.; Lin, X.; Kwok-Man Poon, V.; Sun, T.; Choi-Yi Lau, C.; Fuk-Woo Chan, J.; et al. Productive replication of Middle East respiratory syndrome coronavirus in monocyte-derived dendritic cells modulates innate immune response. *Virology* **2014**, *454–455*, 197–205. [[CrossRef](#)]
138. Yuki, K.; Fujiogi, M.; Koutsogiannaki, S. COVID-19 pathophysiology: A review. *Clin. Immunol.* **2020**, *215*, 108427. [[CrossRef](#)]
139. Wang, F.; Hou, H.; Luo, Y.; Tang, G.; Wu, S.; Huang, M.; Liu, W.; Zhu, Y.; Lin, Q.; Mao, L.; et al. The laboratory tests and host immunity of COVID-19 patients with different severity of illness. *JCI Insight* **2020**. [[CrossRef](#)]
140. Sanchez-Cerrillo, I.; Landete, P.; Aldave, B.; Sanchez-Alonso, S.; Sanchez-Azofra, A.; Marcos-Jimenez, A.; Avalos, E.; Alcaraz-Serna, A.; de los Santos, I.; Mateu-Alberro, T.; et al. Differential Redistribution of Activated Monocyte and Dendritic Cell Subsets to the Lung Associates with Severity of COVID-19. *MedRxiv* **2020**. [[CrossRef](#)]
141. Jafarzadeh, A.; Chauhan, P.; Saha, B.; Jafarzadeh, S.; Nemati, M. Contribution of monocytes and macrophages to the local tissue inflammation and cytokine storm in COVID-19: Lessons from SARS and MERS, and potential therapeutic interventions. *Life Sci.* **2020**, *257*, 118102. [[CrossRef](#)]
142. Ye, Q.; Wang, B.; Mao, J. The pathogenesis and treatment of the ‘Cytokine Storm’ in COVID-19. *J. Infect.* **2020**. [[CrossRef](#)]
143. Channappanavar, R.; Fehr, A.R.; Vijay, R.; Mack, M.; Zhao, J.; Meyerholz, D.K.; Perlman, S. Dysregulated Type I Interferon and Inflammatory Monocyte-Macrophage Responses Cause Lethal Pneumonia in SARS-CoV-Infected Mice. *Cell Host Microbe* **2016**, *19*, 181–193. [[CrossRef](#)] [[PubMed](#)]
144. Liao, M.; Liu, Y.; Yuan, J.; Wen, Y.; Xu, G.; Zhao, J.; Cheng, L.; Li, J.; Wang, X.; Wang, F.; et al. Single-cell landscape of bronchoalveolar immune cells in patients with COVID-19. *Nat. Med.* **2020**, *26*, 842–844. [[CrossRef](#)] [[PubMed](#)]
145. Fu, Y.; Cheng, Y.; Wu, Y. Understanding SARS-CoV-2-Mediated Inflammatory Responses: From Mechanisms to Potential Therapeutic Tools. *Virol. Sin.* **2020**. [[CrossRef](#)] [[PubMed](#)]
146. Giamarellos-Bourboulis, E.J.; Netea, M.G.; Rovina, N.; Akinosoglou, K.; Antoniadou, A.; Antonakos, N.; Damoraki, G.; Gkavogianni, T.; Adami, M.-E.; Katsaounou, P.; et al. Complex Immune Dysregulation in COVID-19 Patients with Severe Respiratory Failure. *Cell Host Microbe* **2020**. [[CrossRef](#)] [[PubMed](#)]

147. Potey, P.M.; Rossi, A.G.; Lucas, C.D.; Dorward, D.A. Neutrophils in the initiation and resolution of acute pulmonary inflammation: Understanding biological function and therapeutic potential. *J. Pathol.* **2019**, *247*, 672–685. [[CrossRef](#)] [[PubMed](#)]
148. Twaddell, S.H.; Baines, K.J.; Grainge, C.; Gibson, P.G. The Emerging Role of Neutrophil Extracellular Traps in Respiratory Disease. *CHEST* **2019**, *156*, 774–782. [[CrossRef](#)]
149. Frantzeskaki, F.; Armaganidis, A.; Orfanos, S.E. Immunothrombosis in Acute Respiratory Distress Syndrome: Cross Talks between Inflammation and Coagulation. *RES* **2017**, *93*, 212–225. [[CrossRef](#)]
150. Ali, R.A.; Gandhi, A.A.; Meng, H.; Yalavarthi, S.; Vreede, A.P.; Estes, S.K.; Palmer, O.R.; Bockenstedt, P.L.; Pinsky, D.J.; Greve, J.M.; et al. Adenosine receptor agonism protects against NETosis and thrombosis in antiphospholipid syndrome. *Nat. Commun.* **2019**, *10*, 1–12. [[CrossRef](#)]
151. Ward, P.A.; Fattahi, F. New strategies for treatment of infectious sepsis. *J. Leukoc. Biol.* **2019**, *106*, 187–192. [[CrossRef](#)]
152. Haick, A.K.; Rzepka, J.P.; Brandon, E.; Balemba, O.B.; Miura, T.A. Neutrophils are needed for an effective immune response against pulmonary rat coronavirus infection, but also contribute to pathology. *J. Gen. Virol.* **2014**, *95*, 578–590. [[CrossRef](#)]
153. Wilk, A.J.; Rustagi, A.; Zhao, N.Q.; Roque, J.; Martínez-Colón, G.J.; McKechnie, J.L.; Ivison, G.T.; Ranganath, T.; Vergara, R.; Hollis, T.; et al. A single-cell atlas of the peripheral immune response in patients with severe COVID-19. *Nat. Med.* **2020**, *26*, 1070–1076. [[CrossRef](#)] [[PubMed](#)]
154. Cao, X. COVID-19: Immunopathology and its implications for therapy. *Nat. Rev. Immunol.* **2020**, *20*, 1–2. [[CrossRef](#)] [[PubMed](#)]
155. Barnes, B.J.; Adrover, J.M.; Baxter-Stoltzfus, A.; Borczuk, A.; Cools-Lartigue, J.; Crawford, J.M.; Daßler-Plenker, J.; Guerci, P.; Huynh, C.; Knight, J.S.; et al. Targeting potential drivers of COVID-19: Neutrophil extracellular traps. *J. Exp. Med.* **2020**, *217*. [[CrossRef](#)] [[PubMed](#)]
156. Zuo, Y.; Yalavarthi, S.; Shi, H.; Gockman, K.; Zuo, M.; Madison, J.A.; Blair, C.; Weber, A.; Barnes, B.J.; Egeblad, M.; et al. Neutrophil extracellular traps (NETs) as markers of disease severity in COVID-19. *Infect. Dis.* **2020**. [[CrossRef](#)]
157. Gralinski, L.E.; Sheahan, T.P.; Morrison, T.E.; Menachery, V.D.; Jensen, K.; Leist, S.R.; Whitmore, A.; Heise, M.T.; Baric, R.S. Complement Activation Contributes to Severe Acute Respiratory Syndrome Coronavirus Pathogenesis. *mBio* **2018**, *9*, e01753-18. [[CrossRef](#)]
158. Magro, C.; Mulvey, J.J.; Berlin, D.; Nuovo, G.; Salvatore, S.; Harp, J.; Baxter-Stoltzfus, A.; Laurence, J. Complement associated microvascular injury and thrombosis in the pathogenesis of severe COVID-19 infection: A report of five cases. *Transl. Res.* **2020**. [[CrossRef](#)]
159. Li, C.K.; Xu, X. Host Immune Responses to SARS Coronavirus in Humans. In *Molecular Biology of the SARS-Coronavirus*; Lal, S.K., Ed.; Springer: Berlin/Heidelberg, Germany, 2010; pp. 259–278.
160. He, R.; Lu, Z.; Zhang, L.; Fan, T.; Xiong, R.; Shen, X.; Feng, H.; Meng, H.; Lin, W.; Jiang, W.; et al. The clinical course and its correlated immune status in COVID-19 pneumonia. *J. Clin. Virol.* **2020**, *127*, 104361. [[CrossRef](#)]
161. Zheng, M.; Gao, Y.; Wang, G.; Song, G.; Liu, S.; Sun, D.; Xu, Y.; Tian, Z. Functional exhaustion of antiviral lymphocytes in COVID-19 patients. *Cell. Mol. Immunol.* **2020**. [[CrossRef](#)]
162. Wang, F.; Nie, J.; Wang, H.; Zhao, Q.; Xiong, Y.; Deng, L.; Song, S.; Ma, Z.; Mo, P.; Zhang, Y. Characteristics of Peripheral Lymphocyte Subset Alteration in COVID-19 Pneumonia. *J. Infect. Dis.* **2020**. [[CrossRef](#)]
163. Rokni, M.; Ghasemi, V.; Tavakoli, Z. Immune responses and pathogenesis of SARS-CoV-2 during an outbreak in Iran: Comparison with SARS and MERS. *Rev. Med. Virol.* **2020**. [[CrossRef](#)]
164. Oh, H.-L.J.; Chia, A.; Chang, C.X.L.; Leong, H.N.; Ling, K.L.; Grotenbreg, G.M.; Gehring, A.J.; Tan, Y.J.; Bertoletti, A. Engineering T Cells Specific for a Dominant Severe Acute Respiratory Syndrome Coronavirus CD8 T Cell Epitope. *J. Virol.* **2011**, *85*, 10464–10471. [[CrossRef](#)] [[PubMed](#)]
165. Channappanavar, R.; Zhao, J.; Perlman, S. T cell-mediated immune response to respiratory coronaviruses. *Immunol. Res.* **2014**, *59*, 118–128. [[CrossRef](#)] [[PubMed](#)]
166. Fan, Y.-Y.; Huang, Z.-T.; Li, L.; Wu, M.-H.; Yu, T.; Koup, R.A.; Bailer, R.T.; Wu, C.-Y. Characterization of SARS-CoV-specific memory T cells from recovered individuals 4 years after infection. *Arch. Virol.* **2009**, *154*, 1093–1099. [[CrossRef](#)] [[PubMed](#)]
167. Peng, H.; Yang, L.; Wang, L.; Li, J.; Huang, J.; Lu, Z.; Koup, R.A.; Bailer, R.T.; Wu, C. Long-lived memory T lymphocyte responses against SARS coronavirus nucleocapsid protein in SARS-recovered patients. *Virology* **2006**, *351*, 466–475. [[CrossRef](#)]

168. Yang, L.-T.; Peng, H.; Zhu, Z.-L.; Li, G.; Huang, Z.-T.; Zhao, Z.-X.; Koup, R.A.; Bailer, R.T.; Wu, C.-Y. Long-lived effector/central memory T-cell responses to severe acute respiratory syndrome coronavirus (SARS-CoV) S antigen in recovered SARS patients. *Clin. Immunol.* **2006**, *120*, 171–178. [[CrossRef](#)]
169. Yang, L.; Peng, H.; Zhu, Z.; Li, G.; Huang, Z.; Zhao, Z.; Koup, R.A.; Bailer, R.T.; Wu, C. Persistent memory CD4+ and CD8+ T-cell responses in recovered severe acute respiratory syndrome (SARS) patients to SARS coronavirus M antigen. *J. Gen. Virol.* **2007**, *88*, 2740–2748. [[CrossRef](#)]
170. Yang, K.; Sun, K.; Srinivasan, K.N.; Salmon, J.; Marques, E.T.; Xu, J.; August, J.T. Immune responses to T-cell epitopes of SARS CoV-N protein are enhanced by N immunization with a chimera of lysosome-associated membrane protein. *Gene Ther.* **2009**, *16*, 1353–1362. [[CrossRef](#)]
171. Mateus, J.; Grifoni, A.; Tarke, A.; Sidney, J.; Ramirez, S.I.; Dan, J.M.; Burger, Z.C.; Rawlings, S.A.; Smith, D.M.; Phillips, E.; et al. Selective and cross-reactive SARS-CoV-2 T cell epitopes in unexposed humans. *Science* **2020**. [[CrossRef](#)]
172. Sette, A.; Crotty, S. Pre-existing immunity to SARS-CoV-2: The knowns and unknowns. *Nat. Rev. Immunol.* **2020**, *20*, 457–458. [[CrossRef](#)]
173. Yaqinuddin, A. Cross-immunity between respiratory coronaviruses may limit COVID-19 fatalities. *Med. Hypotheses* **2020**, *144*, 110049. [[CrossRef](#)]
174. Grifoni, A.; Weiskopf, D.; Ramirez, S.I.; Mateus, J.; Dan, J.M.; Moderbacher, C.R.; Rawlings, S.A.; Sutherland, A.; Premkumar, L.; Jadi, R.S.; et al. Targets of T Cell Responses to SARS-CoV-2 Coronavirus in Humans with COVID-19 Disease and Unexposed Individuals. *Cell* **2020**, *181*, 1489–1501. [[CrossRef](#)] [[PubMed](#)]
175. Weiskopf, D.; Schmitz, K.S.; Raadsen, M.P.; Grifoni, A.; Okba, N.M.A.; Endeman, H.; van den Akker, J.P.C.; Molenkamp, R.; Koopmans, M.P.G.; van Gorp, E.C.M.; et al. Phenotype of SARS-CoV-2-specific T-cells in COVID-19 patients with acute respiratory distress syndrome. *medRxiv* **2020**. [[CrossRef](#)] [[PubMed](#)]
176. Braun, J.; Loyal, L.; Frentsch, M.; Wendisch, D.; Georg, P.; Kurth, F.; Hippenstiel, S.; Dingeldey, M.; Kruse, B.; Fauchere, F.; et al. Presence of SARS-CoV-2 reactive T cells in COVID-19 patients and healthy donors. *medRxiv* **2020**. [[CrossRef](#)]
177. Meckiff, B.J.; Ramírez-Suástegui, C.; Fajardo, V.; Chee, S.J.; Kusnadi, A.; Simon, H.; Grifoni, A.; Pelosi, E.; Weiskopf, D.; Sette, A.; et al. Single-cell transcriptomic analysis of SARS-CoV-2 reactive CD4+ T cells. *bioRxiv* **2020**. [[CrossRef](#)]
178. Bert, N.L.; Tan, A.T.; Kunasegaran, K.; Tham, C.Y.L.; Hafezi, M.; Chia, A.; Chng, M.; Lin, M.; Tan, N.; Linster, M.; et al. Different pattern of pre-existing SARS-COV-2 specific T cell immunity in SARS-recovered and uninfected individuals. *bioRxiv* **2020**. [[CrossRef](#)]
179. Hsueh, P.-R.; Huang, L.-M.; Chen, P.-J.; Kao, C.-L.; Yang, P.-C. Chronological evolution of IgM, IgA, IgG and neutralisation antibodies after infection with SARS-associated coronavirus. *Clin. Microbiol. Infect.* **2004**, *10*, 1062–1066. [[CrossRef](#)]
180. Gorse, G.J.; Donovan, M.M.; Patel, G.B. Antibodies to coronaviruses are higher in older compared with younger adults and binding antibodies are more sensitive than neutralizing antibodies in identifying coronavirus-associated illnesses. *J. Med. Virol.* **2020**, *92*, 512–517. [[CrossRef](#)]
181. Wu, L.-P.; Wang, N.-C.; Chang, Y.-H.; Tian, X.-Y.; Na, D.-Y.; Zhang, L.-Y.; Zheng, L.; Lan, T.; Wang, L.-F.; Liang, G.-D. Duration of Antibody Responses after Severe Acute Respiratory Syndrome. *Emerg. Infect. Dis.* **2007**, *13*, 1562–1564. [[CrossRef](#)]
182. Tang, F.; Quan, Y.; Xin, Z.-T.; Wrammert, J.; Ma, M.-J.; Lv, H.; Wang, T.-B.; Yang, H.; Richardus, J.H.; Liu, W.; et al. Lack of Peripheral Memory B Cell Responses in Recovered Patients with Severe Acute Respiratory Syndrome: A Six-Year Follow-Up Study. *J. Immunol.* **2011**, *186*, 7264–7268. [[CrossRef](#)]
183. Cao, W.-C.; Liu, W.; Zhang, P.-H.; Zhang, F.; Richardus, J.H. Disappearance of Antibodies to SARS-Associated Coronavirus after Recovery. *N. Engl. J. Med.* **2007**, *357*, 1162–1163. [[CrossRef](#)]
184. Wang, B.; Wang, L.; Kong, X.; Geng, J.; Xiao, D.; Ma, C.; Jiang, X.-M.; Wang, P.-H. Long-term coexistence of SARS-CoV-2 with antibody response in COVID-19 patients. *J. Med. Virol.* **2020**. [[CrossRef](#)] [[PubMed](#)]
185. Zhang, B.; Zhou, X.; Zhu, C.; Song, Y.; Feng, F.; Qiu, Y.; Feng, J.; Jia, Q.; Song, Q.; Zhu, B.; et al. Immune Phenotyping Based on the Neutrophil-to-Lymphocyte Ratio and IgG Level Predicts Disease Severity and Outcome for Patients with COVID-19. *Front. Mol. Biosci.* **2020**, *7*. [[CrossRef](#)] [[PubMed](#)]

186. Dobi, A.; Frumence, E.; Rakoto, M.L.; Lebeau, G.; Vagner, D.; Seteyen, A.-L.S.; Giry, C.; Septembre-Malaterre, A.; Jaffar-Bandjee, M.-C.; Raffray, L.; et al. Serological surveys in Reunion Island of the first hospitalized patients revealed that long-lived immunoglobulin G antibodies specific against SARS-CoV2 virus are rapidly vanishing in severe cases. *medRxiv* **2020**. [[CrossRef](#)]
187. To, K.K.-W.; Tsang, O.T.-Y.; Leung, W.-S.; Tam, A.R.; Wu, T.-C.; Lung, D.C.; Yip, C.C.-Y.; Cai, J.-P.; Chan, J.M.-C.; Chik, T.S.-H.; et al. Temporal profiles of viral load in posterior oropharyngeal saliva samples and serum antibody responses during infection by SARS-CoV-2: An observational cohort study. *Lancet Infect. Dis.* **2020**, *20*, 565–574. [[CrossRef](#)]
188. Long, Q.-X.; Tang, X.-J.; Shi, Q.-L.; Li, Q.; Deng, H.-J.; Yuan, J.; Hu, J.-L.; Xu, W.; Zhang, Y.; Lv, F.-J.; et al. Clinical and immunological assessment of asymptomatic SARS-CoV-2 infections. *Nat. Med.* **2020**, *26*, 1–5. [[CrossRef](#)]
189. Sun, B.; Feng, Y.; Mo, X.; Zheng, P.; Wang, Q.; Li, P.; Peng, P.; Liu, X.; Chen, Z.; Huang, H.; et al. Kinetics of SARS-CoV-2 specific IgM and IgG responses in COVID-19 patients. *Emerg. Microbes Infect.* **2020**, *9*, 940–948. [[CrossRef](#)]
190. Huang, W.; Berube, J.; McNamara, M.; Saksena, S.; Hartman, M.; Arshad, T.; Bornheimer, S.J.; O’Gorman, M. Lymphocyte Subset Counts in COVID-19 Patients: A Meta-Analysis. *Cytom. Part A* **2020**. [[CrossRef](#)]
191. Crotty, S.; Ahmed, R. Immunological memory in humans. *Semin. Immunol.* **2004**, *16*, 197–203. [[CrossRef](#)]
192. Slifka, M.K.; Antia, R.; Whitmire, J.K.; Ahmed, R. Humoral Immunity Due to Long-Lived Plasma Cells. *Immunity* **1998**, *8*, 363–372. [[CrossRef](#)]
193. Elsner, R.A.; Hastey, C.J.; Olsen, K.J.; Baumgarth, N. Suppression of Long-Lived Humoral Immunity Following *Borrelia burgdorferi* Infection. *PLoS Pathog.* **2015**, *11*, e1004976. [[CrossRef](#)]
194. Burton, D.R. Antibodies, viruses and vaccines. *Nat. Rev. Immunol.* **2002**, *2*, 706–713. [[CrossRef](#)] [[PubMed](#)]
195. Kucharski, A.J.; Lessler, J.; Cummings, D.A.T.; Riley, S. Timescales of influenza A/H3N2 antibody dynamics. *PLoS Biol.* **2018**, *16*, e2004974. [[CrossRef](#)] [[PubMed](#)]
196. Pasmans, H.; Schurink-van’t Klooster, T.M.; Bogaard, M.J.M.; van Rooijen, D.M.; de Melker, H.E.; Welters, M.J.P.; van der Burg, S.H.; van der Klis, F.R.M.; Buisman, A.-M. Long-term HPV-specific immune response after one versus two and three doses of bivalent HPV vaccination in Dutch girls. *Vaccine* **2019**, *37*, 7280–7288. [[CrossRef](#)] [[PubMed](#)]
197. Ng, D.H.L.; Skehel, J.J.; Kassiotis, G.; Langhorne, J. Recovery of an Antiviral Antibody Response following Attrition Caused by Unrelated Infection. *PLoS Pathog.* **2014**, *10*, e1003843. [[CrossRef](#)] [[PubMed](#)]
198. Roth, K.; Oehme, L.; Zehentmeier, S.; Zhang, Y.; Niesner, R.; Hauser, A.E. Tracking plasma cell differentiation and survival. *Cytom. Part A* **2014**, *85*, 15–24. [[CrossRef](#)] [[PubMed](#)]
199. Wang, S.-F.; Tseng, S.-P.; Yen, C.-H.; Yang, J.-Y.; Tsao, C.-H.; Shen, C.-W.; Chen, K.-H.; Liu, F.-T.; Liu, W.-T.; Chen, Y.-M.A.; et al. Antibody-dependent SARS coronavirus infection is mediated by antibodies against spike proteins. *Biochem. Biophys. Res. Commun.* **2014**, *451*, 208–214. [[CrossRef](#)] [[PubMed](#)]
200. Yip, M.S.; Leung, N.H.L.; Cheung, C.Y.; Li, P.H.; Lee, H.H.Y.; Daëron, M.; Peiris, J.S.M.; Bruzzone, R.; Jaume, M. Antibody-dependent infection of human macrophages by severe acute respiratory syndrome coronavirus. *Virology* **2014**, *11*, 82. [[CrossRef](#)]
201. Tetro, J.A. Is COVID-19 receiving ADE from other coronaviruses? *Microbes Infect.* **2020**, *22*, 72–73. [[CrossRef](#)]
202. Sharma, A. It is too soon to attribute ADE to COVID-19. *Microbes Infect.* **2020**. [[CrossRef](#)]
203. Ehrenfeld, M.; Tincani, A.; Andreoli, L.; Cattalini, M.; Greenbaum, A.; Kanduc, D.; Alijotas-Reig, J.; Zinserling, V.; Semenova, N.; Amital, H.; et al. Covid-19 and autoimmunity. *Autoimmun. Rev.* **2020**, *19*, 102597. [[CrossRef](#)]
204. Galeotti, C.; Bayry, J. Autoimmune and inflammatory diseases following COVID-19. *Nat. Rev. Rheumatol.* **2020**, *16*, 413–414. [[CrossRef](#)] [[PubMed](#)]
205. Xiao, M.; Zhang, Y.; Zhang, S.; Qin, X.; Xia, P.; Cao, W.; Jiang, W.; Chen, H.; Ding, X.; Zhao, H.; et al. Brief Report: Anti-phospholipid antibodies in critically ill patients with Coronavirus Disease 2019 (COVID-19). *Arthritis Rheumatol.* **2020**. [[CrossRef](#)] [[PubMed](#)]
206. Bomhof, G.; Mutsaers, P.G.N.J.; Leebeek, F.W.G.; te Boekhorst, P.A.W.; Hofland, J.; Croles, F.N.; Jansen, A.J.G. COVID-19-associated immune thrombocytopenia. *Br. J. Haematol.* **2020**, *190*, e61–e64. [[CrossRef](#)] [[PubMed](#)]
207. Zulfiqar, A.-A.; Lorenzo-Villalba, N.; Hassler, P.; Andrès, E. Immune Thrombocytopenic Purpura in a Patient with Covid-19. *N. Eng. J. Med.* **2020**. [[CrossRef](#)]

208. Lazarian, G.; Quinquenel, A.; Bellal, M.; Siavellis, J.; Jacquy, C.; Re, D.; Merabet, F.; Mekinian, A.; Braun, T.; Damaj, G.; et al. Autoimmune haemolytic anaemia associated with COVID-19 infection. *Br. J. Haematol.* **2020**, *190*, 29–31. [\[CrossRef\]](#)
209. Lopez, C.; Kim, J.; Pandey, A.; Huang, T.; DeLoughery, T.G. Simultaneous onset of COVID-19 and autoimmune haemolytic anaemia. *Br. Haematol.* **2020**, *190*, 31–32. [\[CrossRef\]](#)
210. Berger, J.R. COVID-19 and the nervous system. *J. Neurovirol.* **2020**, *26*, 143–148. [\[CrossRef\]](#)
211. Dalakas, M.C. Guillain-Barré syndrome: The first documented COVID-19-triggered autoimmune neurologic disease: More to come with myositis in the offing. *Neurol. Neuroimmunol. Neuroinflamm.* **2020**, *7*, e781. [\[CrossRef\]](#)
212. Pouletty, M.; Borocco, C.; Ouldali, N.; Caseris, M.; Basmaci, R.; Lachaume, N.; Bensaïd, P.; Pichard, S.; Kouider, H.; Morelle, G.; et al. Paediatric multisystem inflammatory syndrome temporally associated with SARS-CoV-2 mimicking Kawasaki disease (Kawa-COVID-19): A multicentre cohort. *Annal. Rheum. Dis.* **2020**, *79*, 999–1006. [\[CrossRef\]](#)
213. Wang, H.; Ma, S. The cytokine storm and factors determining the sequence and severity of organ dysfunction in multiple organ dysfunction syndrome. *Am. J. Emerg. Med.* **2008**, *26*, 711–715. [\[CrossRef\]](#)
214. McGonagle, D.; Sharif, K.; O'Regan, A.; Bridgewood, C. The Role of Cytokines including Interleukin-6 in COVID-19 induced Pneumonia and Macrophage Activation Syndrome-Like Disease. *Autoimmun. Rev.* **2020**, 102537. [\[CrossRef\]](#) [\[PubMed\]](#)
215. Camp, J.V.; Jonsson, C.B. A Role for Neutrophils in Viral Respiratory Disease. *Front. Immunol.* **2017**, *8*. [\[CrossRef\]](#) [\[PubMed\]](#)
216. Tecchio, C.; Cassatella, M.A. Neutrophil-derived chemokines on the road to immunity. *Semin. Immunol.* **2016**, *28*, 119–128. [\[CrossRef\]](#) [\[PubMed\]](#)
217. Chen, I.-Y.; Moriyama, M.; Chang, M.-F.; Ichinohe, T. Severe Acute Respiratory Syndrome Coronavirus Viroporin 3a Activates the NLRP3 Inflammasome. *Front. Microbiol.* **2019**, *10*. [\[CrossRef\]](#)
218. Lagunas-Rangel, F.A.; Chávez-Valencia, V. High IL-6/IFN- γ ratio could be associated with severe disease in COVID-19 patients. *J. Med. Virol.* **2020**. [\[CrossRef\]](#)
219. Yang, Y.; Shen, C.; Li, J.; Yuan, J.; Yang, M.; Wang, F.; Li, G.; Li, Y.; Xing, L.; Peng, L.; et al. Exuberant elevation of IP-10, MCP-3 and IL-1ra during SARS-CoV-2 infection is associated with disease severity and fatal outcome. *Infect. Dis.* **2020**. [\[CrossRef\]](#)
220. Qin, C.; Zhou, L.; Hu, Z.; Zhang, S.; Yang, S.; Tao, Y.; Xie, C.; Ma, K.; Shang, K.; Wang, W.; et al. Dysregulation of immune response in patients with COVID-19 in Wuhan, China. *Clin. Infect. Dis.* **2020**. [\[CrossRef\]](#)
221. Kumar, Y.; Liang, C.; Bo, Z.; Rajapakse, J.C.; Ooi, E.E.; Tannenbaum, S.R. Serum Proteome and Cytokine Analysis in a Longitudinal Cohort of Adults with Primary Dengue Infection Reveals Predictive Markers of DHF. *PLoS Negl. Trop. Dis.* **2012**, *6*, e1887. [\[CrossRef\]](#)
222. Liu, K.-T.; Liu, Y.-H.; Lin, C.-Y.; Kuo, P.-L.; Yen, M.-C. Inflammatory molecules expression pattern for identifying pathogen species in febrile patient serum. *Exp. Ther. Med.* **2016**, *12*, 312–318. [\[CrossRef\]](#)
223. Reis, E.A.G.; Hagan, J.E.; Ribeiro, G.S.; Teixeira-Carvalho, A.; Martins-Filho, O.A.; Montgomery, R.R.; Shaw, A.C.; Ko, A.I.; Reis, M.G. Cytokine Response Signatures in Disease Progression and Development of Severe Clinical Outcomes for Leptospirosis. *PLoS Negl. Trop. Dis.* **2013**, *7*, e2457. [\[CrossRef\]](#)
224. Reddy, V.; Mani, R.S.; Desai, A.; Ravi, V. Correlation of plasma viral loads and presence of Chikungunya IgM antibodies with cytokine/chemokine levels during acute Chikungunya virus infection. *J. Med. Virol.* **2014**, *86*, 1393–1401. [\[CrossRef\]](#) [\[PubMed\]](#)
225. Brenner, E.J.; Ungaro, R.C.; Geary, R.B.; Kaplan, G.G.; Kissous-Hunt, M.; Lewis, J.D.; Ng, S.C.; Rahier, J.-F.; Reinisch, W.; Ruemmele, F.M.; et al. Corticosteroids, But Not TNF Antagonists, Are Associated with Adverse COVID-19 Outcomes in Patients with Inflammatory Bowel Diseases: Results From an International Registry. *Gastroenterology* **2020**. [\[CrossRef\]](#) [\[PubMed\]](#)
226. Dolinger, M.T.; Person, H.; Smith, R.; Jarchin, L.; Pittman, N.; Dubinsky, M.C.; Lai, J. Pediatric Crohn Disease and Multisystem Inflammatory Syndrome in Children (MIS-C) and COVID-19 Treated with Infliximab. *J. Pediatr. Gastroenterol. Nutr.* **2020**, *71*, 153–155. [\[CrossRef\]](#) [\[PubMed\]](#)
227. Henderson, L.A.; Canna, S.W.; Schulert, G.S.; Volpi, S.; Lee, P.Y.; Kernan, K.F.; Caricchio, R.; Mahmud, S.; Hazen, M.M.; Halyabar, O.; et al. On the alert for cytokine storm: Immunopathology in COVID-19. *Arthritis Rheumatol.* **2020**. [\[CrossRef\]](#)

228. Cron, R.Q.; Behrens, E.M. *Cytokine Storm Syndrome*; Springer International Publishing: Cham, Switzerland, 2019.
229. Ichikawa, A.; Kuba, K.; Morita, M.; Chida, S.; Tezuka, H.; Hara, H.; Sasaki, T.; Ohteki, T.; Ranieri, V.M.; dos Santos, C.C.; et al. CXCL10-CXCR3 Enhances the Development of Neutrophil-mediated Fulminant Lung Injury of Viral and Nonviral Origin. *Am. J. Respir. Crit. Care Med.* **2013**, *187*, 65–77. [[CrossRef](#)]
230. Kim, Y.H.; Kim, J.-E.; Hyun, M.C. Cytokine response in pediatric patients with pandemic influenza H1N1 2009 virus infection and pneumonia: Comparison with pediatric pneumonia without H1N1 2009 infection. *Pediatr. Pulmonol.* **2011**, *46*, 1233–1239. [[CrossRef](#)]
231. Tang, X.; Du, R.; Wang, R.; Cao, T.; Guan, L.; Yang, C.; Zhu, Q.; Hu, M.; Li, X.; Li, Y.; et al. Comparison of Hospitalized Patients with ARDS Caused by COVID-19 and H1N1. *Chest* **2020**. [[CrossRef](#)]
232. Kindler, E.; Thiel, V.; Weber, F. Chapter Seven—Interaction of SARS and MERS Coronaviruses with the Antiviral Interferon Response. In *Advances in Virus Research*; Ziebuhr, J., Ed.; Academic Press: Cambridge, MA, USA, 2016; Volume 96, pp. 219–243.
233. Astuti, I. Ysrafil Severe Acute Respiratory Syndrome Coronavirus 2 (SARS-CoV-2): An overview of viral structure and host response. *Diabetes Metab. Syndr. Clin. Res. Rev.* **2020**, *14*, 407–412. [[CrossRef](#)]
234. Wong, L.-Y.R.; Lui, P.-Y.; Jin, D.-Y. A molecular arms race between host innate antiviral response and emerging human coronaviruses. *Virol. Sin.* **2016**, *31*, 12–23. [[CrossRef](#)]
235. Hu, Y.; Li, W.; Gao, T.; Cui, Y.; Jin, Y.; Li, P.; Ma, Q.; Liu, X.; Cao, C. The Severe Acute Respiratory Syndrome Coronavirus Nucleocapsid Inhibits Type I Interferon Production by Interfering with TRIM25-Mediated RIG-I Ubiquitination. *J. Virol.* **2017**, *91*. [[CrossRef](#)]
236. Chen, J.; Ly, H. Immunosuppression by viral N proteins. *Oncotarget* **2017**, *8*. [[CrossRef](#)] [[PubMed](#)]
237. Shokri, S.; Mahmoudvand, S.; Taherkhani, R.; Farshadpour, F. Modulation of the immune response by Middle East respiratory syndrome coronavirus. *J. Cell. Physiol.* **2019**, *234*, 2143–2151. [[CrossRef](#)] [[PubMed](#)]
238. Comar, C.E.; Goldstein, S.A.; Li, Y.; Yount, B.; Baric, R.S.; Weiss, S.R. Antagonism of dsRNA-Induced Innate Immune Pathways by NS4a and NS4b Accessory Proteins during MERS Coronavirus Infection. *mBio* **2019**, *10*. [[CrossRef](#)]
239. Rabouw, H.H.; Langereis, M.A.; Knaap, R.C.M.; Dalebout, T.J.; Canton, J.; Sola, I.; Enjuanes, L.; Bredendbeek, P.J.; Kikkert, M.; de Groot, R.J.; et al. Middle East Respiratory Coronavirus Accessory Protein 4a Inhibits PKR-Mediated Antiviral Stress Responses. *PLoS Pathog.* **2016**, *12*, e1005982. [[CrossRef](#)]
240. Thornbrough, J.M.; Jha, B.K.; Yount, B.; Goldstein, S.A.; Li, Y.; Elliott, R.; Sims, A.C.; Baric, R.S.; Silverman, R.H.; Weiss, S.R. Middle East Respiratory Syndrome Coronavirus NS4b Protein Inhibits Host RNase L Activation. *mBio* **2016**, *7*. [[CrossRef](#)]
241. Shen, Z.; Wang, G.; Yang, Y.; Shi, J.; Fang, L.; Li, F.; Xiao, S.; Fu, Z.F.; Peng, G. A conserved region of nonstructural protein 1 from alphacoronaviruses inhibits host gene expression and is critical for viral virulence. *J. Biol. Chem.* **2019**, *294*, 13606–13618. [[CrossRef](#)]
242. Jauregui, A.R.; Savalia, D.; Lowry, V.K.; Farrell, C.M.; Wathelet, M.G. Identification of Residues of SARS-CoV nsp1 That Differentially Affect Inhibition of Gene Expression and Antiviral Signaling. *PLoS ONE* **2013**, *8*, e62416. [[CrossRef](#)]
243. Menachery, V.D.; Debbink, K.; Baric, R.S. Coronavirus non-structural protein 16: Evasion, attenuation, and possible treatments. *Virus Res.* **2014**, *194*, 191–199. [[CrossRef](#)]
244. Shi, C.-S.; Qi, H.-Y.; Boullaran, C.; Huang, N.-N.; Abu-Asab, M.; Shelhamer, J.H.; Kehrl, J.H. SARS-Coronavirus Open Reading Frame-9b Suppresses Innate Immunity by Targeting Mitochondria and the MAVS/TRAF3/TRAF6 Signalingosome. *J. Immunol.* **2014**, *193*, 3080–3089. [[CrossRef](#)]
245. Báez-Santos, Y.M.; St. John, S.E.; Mesecar, A.D. The SARS-coronavirus papain-like protease: Structure, function and inhibition by designed antiviral compounds. *Antivir. Res.* **2015**, *115*, 21–38. [[CrossRef](#)]
246. Yang, J.-R.; Deng, D.-T.; Wu, N.; Yang, B.; Li, H.-J.; Pan, X.-B. Persistent viral RNA positivity during recovery period of a patient with SARS-CoV-2 infection. *J. Med. Virol.* **2020**. [[CrossRef](#)] [[PubMed](#)]
247. Wang, L.; He, W.; Yu, X.; Hu, D.; Bao, M.; Liu, H.; Zhou, J.; Jiang, H. Coronavirus disease 2019 in elderly patients: Characteristics and prognostic factors based on 4-week follow-up. *J. Infect.* **2020**. [[CrossRef](#)] [[PubMed](#)]
248. Vallejo, A.N. Age-dependent alterations of the T cell repertoire and functional diversity of T cells of the aged. *Immunol. Res.* **2006**, *36*, 221–228. [[CrossRef](#)]

249. Lega, S.; Naviglio, S.; Volpi, S.; Tommasini, A. Recent Insight into SARS-CoV2 Immunopathology and Rationale for Potential Treatment and Preventive Strategies in COVID-19. *Vaccines* **2020**, *8*, 224. [[CrossRef](#)] [[PubMed](#)]
250. Zimmermann, P.; Curtis, N. Coronavirus Infections in Children Including COVID-19: An Overview of the Epidemiology, Clinical Features, Diagnosis, Treatment and Prevention Options in Children. *Pediatr. Infect. Dis. J.* **2020**, *39*, 355–368. [[CrossRef](#)] [[PubMed](#)]
251. Kevat, A. Children may be less affected than adults by novel coronavirus (COVID-19). *Paediatr. Child Health* **2020**, *56*, 657. [[CrossRef](#)]
252. Prendergast, A.J.; Klenerman, P.; Goulder, P.J.R. The impact of differential antiviral immunity in children and adults. *Nat. Rev. Immunol.* **2012**, *12*, 636–648. [[CrossRef](#)]
253. Belot, A.; Antona, D.; Renolleau, S.; Javouhey, E.; Hentgen, V.; Angoulvant, F.; Delacourt, C.; Iriart, X.; Ovaert, C.; Bader-Meunier, B.; et al. SARS-CoV-2-related paediatric inflammatory multisystem syndrome, an epidemiological study, France, 1 March to 17 May 2020. *Eurosurveillance* **2020**, *25*, 2001010. [[CrossRef](#)]
254. Verdoni, L.; Mazza, A.; Gervasoni, A.; Martelli, L.; Ruggeri, M.; Ciuffreda, M.; Bonanomi, E.; D'Antiga, L. An outbreak of severe Kawasaki-like disease at the Italian epicentre of the SARS-CoV-2 epidemic: An observational cohort study. *Lancet* **2020**, *395*, 1771–1778. [[CrossRef](#)]
255. Dashraath, P.; Wong, J.L.J.; Lim, M.X.K.; Lim, L.M.; Li, S.; Biswas, A.; Choolani, M.; Mattar, C.; Su, L.L. Coronavirus disease 2019 (COVID-19) pandemic and pregnancy. *Am. J. Obstet. Gynecol.* **2020**. [[CrossRef](#)]
256. Liu, H.; Wang, L.-L.; Zhao, S.-J.; Kwak-Kim, J.; Mor, G.; Liao, A.-H. Why are pregnant women susceptible to COVID-19? An immunological viewpoint. *J. Reprod. Immunol.* **2020**, *139*, 103122. [[CrossRef](#)] [[PubMed](#)]
257. Nasiri, M.J.; Haddadi, S.; Tahvildari, A.; Farsi, Y.; Arbabi, M.; Hasanzadeh, S.; Jamshidi, P.; Murthi, M.; Mirsaedi, M. COVID-19 clinical characteristics, and sex-specific risk of mortality: Systematic Review and Meta-analysis. *medRxiv* **2020**. [[CrossRef](#)]
258. Channappanavar, R.; Fett, C.; Mack, M.; Eyck, P.P.T.; Meyerholz, D.K.; Perlman, S. Sex-Based Differences in Susceptibility to Severe Acute Respiratory Syndrome Coronavirus Infection. *J. Immunol.* **2017**, *198*, 4046–4053. [[CrossRef](#)] [[PubMed](#)]
259. Klein, S.L.; Flanagan, K.L. Sex differences in immune responses. *Nat. Rev. Immunol.* **2016**, *16*, 626–638. [[CrossRef](#)] [[PubMed](#)]
260. Kadel, S.; Kovats, S. Sex Hormones Regulate Innate Immune Cells and Promote Sex Differences in Respiratory Virus Infection. *Front. Immunol.* **2018**, *9*. [[CrossRef](#)]
261. Kachuri, L.; Francis, S.S.; Morrison, M.; Bossé, Y.; Cavazos, T.B.; Rashkin, S.R.; Ziv, E.; Witte, J.S. The landscape of host genetic factors involved in infection to common viruses and SARS-CoV-2. *medRxiv* **2020**. [[CrossRef](#)]
262. Scepánovic, P.; Alanio, C.; Hammer, C.; Hodel, F.; Bergstedt, J.; Patin, E.; Thorball, C.W.; Chaturvedi, N.; Charbit, B.; Abel, L.; et al. Human genetic variants and age are the strongest predictors of humoral immune responses to common pathogens and vaccines. *Genome Med.* **2018**, *10*, 59. [[CrossRef](#)]
263. Kenney, A.D.; Dowdle, J.A.; Bozzacco, L.; McMichael, T.M.; St. Gelais, C.; Panfil, A.R.; Sun, Y.; Schlesinger, L.S.; Anderson, M.Z.; Green, P.L.; et al. Human Genetic Determinants of Viral Diseases. *Annu. Rev. Genet.* **2017**, *51*, 241–263. [[CrossRef](#)]
264. Lin, M.; Tseng, H.-K.; Trejaut, J.A.; Lee, H.-L.; Loo, J.-H.; Chu, C.-C.; Chen, P.-J.; Su, Y.-W.; Lim, K.H.; Tsai, Z.-U.; et al. Association of HLA class I with severe acute respiratory syndrome coronavirus infection. *BMC Med. Genet.* **2003**, *4*, 9. [[CrossRef](#)]
265. Cheng, Y.; Cheng, G.; Chui, C.H.; Lau, F.Y.; Chan, P.K.S.; Ng, M.H.L.; Sung, J.J.Y.; Wong, R.S.M. ABO Blood Group and Susceptibility to Severe Acute Respiratory Syndrome. *JAMA* **2005**, *293*, 1447–1451. [[CrossRef](#)]
266. Ellinghaus, D.; Degenhardt, F.; Bujanda, L.; Buti, M.; Albillos, A.; Invernizzi, P.; Fernández, J.; Prati, D.; Baselli, G.; Asselta, R.; et al. Genomewide Association Study of Severe Covid-19 with Respiratory Failure. *N. Eng. J. Med.* **2020**. [[CrossRef](#)] [[PubMed](#)]
267. Zhao, J.; Yang, Y.; Huang, H.; Li, D.; Gu, D.; Lu, X.; Zhang, Z.; Liu, L.; Liu, T.; Liu, Y.; et al. Relationship between the ABO Blood Group and the COVID-19 Susceptibility. *medRxiv* **2020**. [[CrossRef](#)]
268. Zietz, M.; Tatonetti, N.P. Testing the association between blood type and COVID-19 infection, intubation, and death. *medRxiv* **2020**. [[CrossRef](#)]
269. Alzoughool, F.; Alanagreh, L. Coronavirus drugs: Using plasma from recovered patients as a treatment for COVID-19. *JRS* **2020**, 1–5. [[CrossRef](#)]

270. Jawhara, S. Could Intravenous Immunoglobulin Collected from Recovered Coronavirus Patients Protect against COVID-19 and Strengthen the Immune System of New Patients? *IJMS* **2020**, *21*, 2272. [[CrossRef](#)]
271. Keith, P.; Day, M.; Perkins, L.; Moyer, L.; Hewitt, K.; Wells, A. A novel treatment approach to the novel coronavirus: An argument for the use of therapeutic plasma exchange for fulminant COVID-19. *Crit. Care* **2020**, *24*, 128. [[CrossRef](#)]
272. Casadevall, A.; Scharff, M.D. Serum therapy revisited: Animal models of infection and development of passive antibody therapy. *Antimicrob. Agents Chemother.* **1994**, *38*, 1695–1702. [[CrossRef](#)]
273. Casadevall, A.; Pirofski, L. Antibody-mediated regulation of cellular immunity and the inflammatory response. *Trends Immunol.* **2003**, *24*, 474–478. [[CrossRef](#)]
274. Rojas, M.; Rodríguez, Y.; Monsalve, D.M.; Acosta-Ampudia, Y.; Camacho, B.; Gallo, J.E.; Rojas-Villarraga, A.; Ramírez-Santana, C.; Díaz-Coronado, J.C.; Manrique, R.; et al. Convalescent plasma in Covid-19: Possible mechanisms of action. *Autoimmun. Rev.* **2020**, *19*, 102554. [[CrossRef](#)]
275. Saghazadeh, A.; Rezaei, N. Towards treatment planning of COVID-19: Rationale and hypothesis for the use of multiple immunosuppressive agents: Anti-antibodies, immunoglobulins, and corticosteroids. *Int. Immunopharm.* **2020**, *84*, 106560. [[CrossRef](#)]
276. Soo, Y.O.Y.; Cheng, Y.; Wong, R.; Hui, D.S.; Lee, C.K.; Tsang, K.K.S.; Ng, M.H.L.; Chan, P.; Cheng, G.; Sung, J.J.Y. Retrospective comparison of convalescent plasma with continuing high-dose methylprednisolone treatment in SARS patients. *Clin. Microbiol. Infect.* **2004**, *10*, 676–678. [[CrossRef](#)] [[PubMed](#)]
277. Yeh, K.-M.; Chiueh, T.-S.; Siu, L.K.; Lin, J.-C.; Chan, P.K.S.; Peng, M.-Y.; Wan, H.-L.; Chen, J.-H.; Hu, B.-S.; Perng, C.-L.; et al. Experience of using convalescent plasma for severe acute respiratory syndrome among healthcare workers in a Taiwan hospital. *J. Antimicrob. Chemother.* **2005**, *56*, 919–922. [[CrossRef](#)] [[PubMed](#)]
278. Bloch, E.M.; Shoham, S.; Casadevall, A.; Sachais, B.S.; Shaz, B.; Winters, J.L.; van Buskirk, C.; Grossman, B.J.; Joyner, M.; Henderson, J.P.; et al. Deployment of convalescent plasma for the prevention and treatment of COVID-19. *J. Clin. Investig.* **2020**. [[CrossRef](#)] [[PubMed](#)]
279. Perotti, C.; Baldanti, F.; Bruno, R.; Fante, C.D.; Seminari, E.; Casari, S.; Percivalle, E.; Glingani, C.; Musella, V.; Belliato, M.; et al. Mortality reduction in 46 severe Covid-19 patients treated with hyperimmune plasma. A proof of concept single arm multicenter trial. *Haematologica* **2020**. [[CrossRef](#)] [[PubMed](#)]
280. Zhang, J.; Yang, Y.; Yang, N.; Ma, Y.; Zhou, Q.; Li, W.; Wang, X.; Huang, L.; Luo, X.; Fukuoka, T.; et al. Effectiveness of intravenous immunoglobulin for children with severe COVID-19: A rapid review. *Annal. Transl. Med.* **2020**, *8*, 625. [[CrossRef](#)]
281. Cao, W.; Liu, X.; Bai, T.; Fan, H.; Hong, K.; Song, H.; Han, Y.; Lin, L.; Ruan, L.; Li, T. High-Dose Intravenous Immunoglobulin as a Therapeutic Option for Deteriorating Patients with Coronavirus Disease 2019. *Open Forum Infect. Dis.* **2020**, *7*. [[CrossRef](#)]
282. Mohtadi, N.; Ghaysouri, A.; Shirazi, S.; Shafiee, E.; Bastani, E.; Kokhazadeh, T.; Tavan, H. Recovery of severely ill COVID-19 patients by intravenous immunoglobulin (IVIG) treatment: A case series. *Virology* **2020**, *548*, 1–5. [[CrossRef](#)]
283. Feldstein, L.R.; Rose, E.B.; Horwitz, S.M.; Collins, J.P.; Newhams, M.M.; Son, M.B.F.; Newburger, J.W.; Kleinman, L.C.; Heidemann, S.M.; Martin, A.A.; et al. Multisystem Inflammatory Syndrome in U.S. Children and Adolescents. *N. Eng. J. Med.* **2020**. [[CrossRef](#)]
284. Sokolovsky, S.; Soni, P.; Hoffman, T.; Kahn, P.; Scheers-Masters, J. COVID-19 associated Kawasaki-like multisystem inflammatory disease in an adult. *Am. J. Emerg. Med.* **2020**. [[CrossRef](#)]
285. Yiğenoğlu, T.N.; Ulas, T.; Dal, M.S.; Korkmaz, S.; Erkurt, M.A.; Altuntaş, F. Extracorporeal blood purification treatment options for COVID-19: The role of immunoabsorption. *Transfus. Apher. Sci.* **2020**, 102855. [[CrossRef](#)]
286. Daoud, A.M.; Soliman, K.M.; Ali, H.K. Potential Limitations of Plasmapheresis in Treatment of COVID-19 Patients and How to Overcome Them? *Ther. Apher. Dial.* **2020**. [[CrossRef](#)] [[PubMed](#)]
287. Honore, P.M.; Mugisha, A.; Kugener, L.; Redant, S.; Attou, R.; Gallerani, A.; De Bels, D. Therapeutic plasma exchange as a routine therapy in septic shock and as an experimental treatment for COVID-19: We are not sure. *Critic. Care* **2020**, *24*, 226. [[CrossRef](#)] [[PubMed](#)]
288. Khamis, F.; Al-Zakwani, I.; Al Hashmi, S.; Al Dowaiqi, S.; Al Bahrani, M.; Pandak, N.; Al Khalili, H.; Memish, Z. Therapeutic Plasma Exchange in Adults with Severe COVID-19 Infection. *Int. J. Infect. Dis.* **2020**. [[CrossRef](#)] [[PubMed](#)]

289. Kesici, S.; Yavuz, S.; Bayrakci, B. Get rid of the bad first: Therapeutic plasma exchange with convalescent plasma for severe COVID-19. *Proc. Natl. Acad. Sci. USA* **2020**, *117*, 12526–12527. [[CrossRef](#)] [[PubMed](#)]
290. Wang, C.; Li, W.; Drabek, D.; Okba, N.M.A.; van Haperen, R.; Osterhaus, A.D.M.E.; van Kuppeveld, F.J.M.; Haagmans, B.L.; Grosveld, F.; Bosch, B.-J. A human monoclonal antibody blocking SARS-CoV-2 infection. *Microbiology* **2020**. [[CrossRef](#)]
291. Pan, X.; Zhou, P.; Fan, T.; Wu, Y.; Zhang, J.; Shi, X.; Shang, W.; Fang, L.; Jiang, X.; Shi, J.; et al. Immunoglobulin fragment F(ab')₂ against RBD potently neutralizes SARS-CoV-2 in vitro. *Pharmacol. Toxicol.* **2020**. [[CrossRef](#)]
292. Alsoussi, W.B.; Turner, J.S.; Case, J.B.; Zhao, H.; Schmitz, A.J.; Zhou, J.Q.; Chen, R.E.; Lei, T.; Rizk, A.A.; McIntire, K.M.; et al. A Potently Neutralizing Antibody Protects Mice against SARS-CoV-2 Infection. *J. Immunol.* **2020**. [[CrossRef](#)]
293. Lei, C.; Qian, K.; Li, T.; Zhang, S.; Fu, W.; Ding, M.; Hu, S. Neutralization of SARS-CoV-2 spike pseudotyped virus by recombinant ACE2-Ig. *Nat. Commun.* **2020**, *11*, 2070. [[CrossRef](#)]
294. Díez, J.-M.; Romero, C.; Gajardo, R. Currently available intravenous immunoglobulin (Gamunex®-C and Flebogamma® DIF) contains antibodies reacting against SARS-CoV-2 antigens. *Immunology* **2020**. [[CrossRef](#)]
295. Baum, A.; Fulton, B.O.; Wloga, E.; Copin, R.; Pascal, K.E.; Russo, V.; Giordano, S.; Lanza, K.; Negron, N.; Ni, M.; et al. Antibody cocktail to SARS-CoV-2 spike protein prevents rapid mutational escape seen with individual antibodies. *Science* **2020**. [[CrossRef](#)]
296. Tu, Y.-F.; Chien, C.-S.; Yarmishyn, A.A.; Lin, Y.-Y.; Luo, Y.-H.; Lin, Y.-T.; Lai, W.-Y.; Yang, D.-M.; Chou, S.-J.; Yang, Y.-P.; et al. A Review of SARS-CoV-2 and the Ongoing Clinical Trials. *Int. J. Mol. Sci.* **2020**, *21*, 2657. [[CrossRef](#)] [[PubMed](#)]
297. Ponticelli, C.; Moroni, G. Hydroxychloroquine in systemic lupus erythematosus (SLE). *Expert Opin. Drug Saf.* **2017**, *16*, 411–419. [[CrossRef](#)] [[PubMed](#)]
298. Wang, M.; Cao, R.; Zhang, L.; Yang, X.; Liu, J.; Xu, M.; Shi, Z.; Hu, Z.; Zhong, W.; Xiao, G. Remdesivir and chloroquine effectively inhibit the recently emerged novel coronavirus (2019-nCoV) in vitro. *Cell Res.* **2020**, *30*, 269–271. [[CrossRef](#)] [[PubMed](#)]
299. Chowdhury, M.S.; Rathod, J.; Gernsheimer, J. A Rapid Systematic Review of Clinical Trials Utilizing Chloroquine and Hydroxychloroquine as a Treatment for COVID-19. *Acad. Emerg. Med.* **2020**, *27*, 493–504. [[CrossRef](#)]
300. Vincent, M.J.; Bergeron, E.; Benjannet, S.; Erickson, B.R.; Rollin, P.E.; Ksiazek, T.G.; Seidah, N.G.; Nichol, S.T. Chloroquine is a potent inhibitor of SARS coronavirus infection and spread. *Virol. J.* **2005**, *2*, 69. [[CrossRef](#)]
301. Picot, S.; Marty, A.; Bienvenu, A.-L.; Blumberg, L.H.; Dupouy-Camet, J.; Carnevale, P.; Kano, S.; Jones, M.K.; Daniel-Ribeiro, C.T.; Mas-Coma, S. Coalition: Advocacy for prospective clinical trials to test the post-exposure potential of hydroxychloroquine against COVID-19. *One Health* **2020**, *9*, 100131. [[CrossRef](#)]
302. Lagier, J.-C.; Million, M.; Gautret, P.; Colson, P.; Cortaredona, S.; Giraud-Gatineau, A.; Honoré, S.; Gaubert, J.-Y.; Fournier, P.-E.; Tissot-Dupont, H.; et al. Outcomes of 3737 COVID-19 patients treated with hydroxychloroquine/azithromycin and other regimens in Marseille, France: A retrospective analysis. *Travel Med. Infect. Dis.* **2020**, *36*, 101791. [[CrossRef](#)]
303. Molina, J.M.; Delaugerre, C.; Le Goff, J.; Mela-Lima, B.; Ponscarne, D.; Goldwirt, L.; de Castro, N. No evidence of rapid antiviral clearance or clinical benefit with the combination of hydroxychloroquine and azithromycin in patients with severe COVID-19 infection. *Méd. Mal. Infect.* **2020**, *50*, 384. [[CrossRef](#)]
304. Putman, M.; Chock, Y.P.E.; Tam, H.; Kim, A.H.J.; Sattui, S.E.; Berenbaum, F.; Danila, M.I.; Korsten, P.; Sanchez-Alvarez, C.; Sparks, J.A.; et al. Antirheumatic Disease Therapies for the Treatment of COVID-19: A Systematic Review and Meta-analysis. *Arthritis Rheumatol.* **2020**. [[CrossRef](#)]
305. Bauman, J.L.; Tisdale, J.E. Chloroquine and Hydroxychloroquine in the Era of SARS—CoV₂: Caution on Their Cardiac Toxicity. *Pharmacotherapy* **2020**, *40*, 387–388. [[CrossRef](#)]
306. Lofgren, S.M.M.; Nicol, M.R.; Bangdiwala, A.S.; Pastick, K.A.; Okafor, E.C.; Skipper, C.P.; Pullen, M.F.; Engen, N.W.; Abassi, M.; Williams, D.A.; et al. Safety of Hydroxychloroquine among Outpatient Clinical Trial Participants for COVID-19. *medRxiv* **2020**. [[CrossRef](#)]
307. Nanni, O.; Viale, P.; Vertogen, B.; Lilli, C.; Zingaretti, C.; Donati, C.; Masini, C.; Monti, M.; Serra, P.; Vespignani, R.; et al. PROTECT Trial: A cluster-randomized study with hydroxychloroquine versus observational support for prevention or early-phase treatment of Coronavirus disease (COVID-19): A structured summary of a study protocol for a randomized controlled trial. *Trials* **2020**, *21*, 689. [[CrossRef](#)] [[PubMed](#)]

308. Zou, L.; Dai, L.; Zhang, X.; Zhang, Z.; Zhang, Z. Hydroxychloroquine and chloroquine: A potential and controversial treatment for COVID-19. *Arch. Pharm. Res.* **2020**. [[CrossRef](#)] [[PubMed](#)]
309. Russell, C.D.; Millar, J.E.; Baillie, J.K. Clinical evidence does not support corticosteroid treatment for 2019-nCoV lung injury. *Lancet* **2020**, *395*, 473–475. [[CrossRef](#)]
310. Yang, Z.; Liu, J.; Zhou, Y.; Zhao, X.; Zhao, Q.; Liu, J. The effect of corticosteroid treatment on patients with coronavirus infection: A systematic review and meta-analysis. *J. Infect.* **2020**. [[CrossRef](#)]
311. Wang, D.; Wang, J.; Jiang, Q.; Yang, J.; Li, J.; Gao, C.; Jiang, H.; Ge, L.; Liu, Y. No Clear Benefit to the Use of Corticosteroid as Treatment in Adult Patients with Coronavirus Disease 2019: A Retrospective Cohort Study. *Infect. Dis.* **2020**. [[CrossRef](#)]
312. Hu, F.; Yin, G.; Chen, Y.; Song, J.; Ye, M.; Liu, J.; Chen, C.; Song, Y.; Tang, X.; Zhang, Y. Corticosteroid, oseltamivir, and delayed admission are independent risk factors for prolonged viral shedding in patients with Coronavirus Disease 2019. *Clin. Respir. J.* **2020**. [[CrossRef](#)]
313. Lee, K.H.; Yoon, S.; Jeong, G.H.; Kim, J.Y.; Han, Y.J.; Hong, S.H.; Ryu, S.; Kim, J.S.; Lee, J.Y.; Yang, J.W.; et al. Efficacy of Corticosteroids in Patients with SARS, MERS and COVID-19: A Systematic Review and Meta-Analysis. *J. Clin. Med.* **2020**, *9*, 2392. [[CrossRef](#)]
314. Hasan, S.S.; Capstick, T.; Ahmed, R.; Kow, C.S.; Mazhar, F.; Merchant, H.A.; Zaidi, S.T.R. Mortality in COVID-19 patients with acute respiratory distress syndrome and corticosteroids use: A systematic review and meta-analysis. *Expert Rev. Respir. Med.* **2020**. [[CrossRef](#)]
315. Group, T.R.C. Dexamethasone in Hospitalized Patients with Covid-19—Preliminary Report. *N. Eng. J. Med.* **2020**. [[CrossRef](#)]
316. Zhou, W.; Liu, Y.; Tian, D.; Wang, C.; Wang, S.; Cheng, J.; Hu, M.; Fang, M.; Gao, Y. Potential benefits of precise corticosteroids therapy for severe 2019-nCoV pneumonia. *Sig. Transduct. Target. Ther.* **2020**, *5*, 18. [[CrossRef](#)] [[PubMed](#)]
317. Ferro, F.; Elefante, E.; Puxeddu, I.; Baldini, C.; Bartoloni, E.; Baratè, C.; Galimberti, S.; Talarico, R.; Mosca, M.; Bombardieri, S. COVID-19: The new challenge for rheumatologists. First update. *Clin. Exp. Rheumatol.* **2020**, *38*, 373–382. [[PubMed](#)]
318. Sarzi-Puttini, P.; Giorgi, V.; Sirotti, S.; Marotto, D.; Ardizzone, S.; Rizzardini, G.; Antinori, S.; Galli, M. COVID-19, cytokines and immunosuppression: What can we learn from severe acute respiratory syndrome? *Clin. Exp. Rheumatol.* **2020**, *38*, 337–342. [[PubMed](#)]
319. Buonaguro, F.M.; Puzanov, I.; Ascierio, P.A. Anti-IL6R role in treatment of COVID-19-related ARDS. *J. Transl. Med.* **2020**, *18*, 165. [[CrossRef](#)]
320. Guo, C.; Li, B.; Ma, H.; Wang, X.; Cai, P.; Yu, Q.; Zhu, L.; Jin, L.; Jiang, C.; Fang, J.; et al. Tocilizumab treatment in severe COVID-19 patients attenuates the inflammatory storm incited by monocyte centric immune interactions revealed by single-cell analysis. *Genomics* **2020**. [[CrossRef](#)]
321. Bonaventura, A.; Vecchié, A.; Wang, T.S.; Lee, E.; Cremer, P.C.; Carey, B.; Rajendram, P.; Hudock, K.M.; Korbee, L.; Van Tassel, B.W.; et al. Targeting GM-CSF in COVID-19 Pneumonia: Rationale and Strategies. *Front. Immunol.* **2020**, *11*. [[CrossRef](#)]
322. Luca, G.D.; Cavalli, G.; Campochiaro, C.; Della-Torre, E.; Angelillo, P.; Tomelleri, A.; Boffini, N.; Tentori, S.; Mette, F.; Farina, N.; et al. GM-CSF blockade with mavrilimumab in severe COVID-19 pneumonia and systemic hyperinflammation: A single-centre, prospective cohort study. *Lancet Rheumatol.* **2020**, *2*, e465–e473. [[CrossRef](#)]
323. Lokugamage, K.G.; Hage, A.; Schindewolf, C.; Rajsbaum, R.; Menachery, V.D. SARS-CoV-2 is sensitive to type I interferon pretreatment. *Microbiology* **2020**. [[CrossRef](#)]
324. Sallard, E.; Lescure, F.-X.; Yazdanpanah, Y.; Mentre, F.; Peiffer-Smadja, N. Type 1 interferons as a potential treatment against COVID-19. *Antivir. Res.* **2020**, *178*, 104791. [[CrossRef](#)]
325. Soy, M.; Keser, G.; Atagündüz, P.; Tabak, F.; Atagündüz, I.; Kayhan, S. Cytokine storm in COVID-19: Pathogenesis and overview of anti-inflammatory agents used in treatment. *Clin. Rheumatol.* **2020**, *39*, 2085–2094. [[CrossRef](#)]
326. Cauchois, R.; Koubi, M.; Delarbre, D.; Manet, C.; Carvelli, J.; Blasco, V.B.; Jean, R.; Fouche, L.; Bornet, C.; Pauly, V.; et al. Early IL-1 receptor blockade in severe inflammatory respiratory failure complicating COVID-19. *PNAS* **2020**. [[CrossRef](#)] [[PubMed](#)]

327. Diurno, F.; Numis, F.G.; Porta, G.; Cirillo, F.; Maddaluno, S.; Ragozzino, A.; Negri, P.D.; Gennaro, C.D.; Pagano, A.; Allegorico, E.; et al. Eculizumab treatment in patients with COVID-19: Preliminary results from real life ASL Napoli 2 Nord experience. *Eur. Rev. Med. Pharmacol. Sci.* **2020**, *8*. [[CrossRef](#)]
328. Stebbing, J.; Phelan, A.; Griffin, I.; Tucker, C.; Oechsle, O.; Smith, D.; Richardson, P. COVID-19: Combining antiviral and anti-inflammatory treatments. *Lancet Infect. Dis.* **2020**, *20*, 400–402. [[CrossRef](#)]
329. Cantini, F.; Niccoli, L.; Nannini, C.; Matarrese, D.; Natale, M.E.D.; Lotti, P.; Aquilini, D.; Landini, G.; Cimolato, B.; Pietro, M.A.D.; et al. Beneficial impact of Baricitinib in COVID-19 moderate pneumonia; multicentre study. *J. Infect.* **2020**. [[CrossRef](#)] [[PubMed](#)]
330. Cingolani, A.; Tummolo, A.M.; Montemurro, G.; Gremese, E.; Larosa, L.; Cipriani, M.C.; Pasciuto, G.; Liperoti, R.; Murri, R.; Pirronti, T.; et al. Baricitinib as rescue therapy in a patient with COVID-19 with no complete response to sarilumab. *Infection* **2020**. [[CrossRef](#)]
331. Titanji, B.K.; Farley, M.M.; Mehta, A.; Connor-Schuler, R.; Moanna, A.; Cribbs, S.K.; O’Shea, J.; DeSilva, K.; Chan, B.; Edwards, A.; et al. Use of Baricitinib in Patients with Moderate and Severe COVID-19. *Clin. Infect. Dis.* **2020**. [[CrossRef](#)]
332. Bari, E.; Ferrarotti, I.; Saracino, L.; Perteghella, S.; Torre, M.L.; Corsico, A.G. Mesenchymal Stromal Cell Secretome for Severe COVID-19 Infections: Premises for the Therapeutic Use. *Cells* **2020**, *9*, 924. [[CrossRef](#)]
333. Leng, Z.; Zhu, R.; Hou, W.; Feng, Y.; Yang, Y.; Han, Q.; Shan, G.; Meng, F.; Du, D.; Wang, S.; et al. Transplantation of ACE2-Mesenchymal Stem Cells Improves the Outcome of Patients with COVID-19 Pneumonia. *Aging Dis.* **2020**, *11*, 216. [[CrossRef](#)]
334. Shetty, A.K. Mesenchymal Stem Cell Infusion Shows Promise for Combating Coronavirus (COVID-19)-Induced Pneumonia. *Aging Dis.* **2020**, *11*, 462. [[CrossRef](#)]
335. Zhao, R.C. Stem Cell-Based Therapy for Coronavirus Disease 2019. *Stem Cells Dev.* **2020**. [[CrossRef](#)]
336. Atluri, S.; Manchikanti, L.; Hirsch, J.A. Expanded Umbilical Cord Mesenchymal Stem Cells (UC-MSCs) as a Therapeutic Strategy In Managing Critically Ill COVID-19 Patients: The Case for Compassionate Use. *Pain Physician* **2020**, *23*, E71–E83. [[PubMed](#)]



© 2020 by the authors. Licensee MDPI, Basel, Switzerland. This article is an open access article distributed under the terms and conditions of the Creative Commons Attribution (CC BY) license (<http://creativecommons.org/licenses/by/4.0/>).