



**HAL**  
open science

# Photometrical analysis of mirrored light pipe: From state-of-the-art on experimental results (1990–2019) to the proposition of new experimental observations in high solar potential climates

Bruno Malet-Damour, Dimitri Bigot, Stéphane Guichard, Harry Boyer

## ► To cite this version:

Bruno Malet-Damour, Dimitri Bigot, Stéphane Guichard, Harry Boyer. Photometrical analysis of mirrored light pipe: From state-of-the-art on experimental results (1990–2019) to the proposition of new experimental observations in high solar potential climates. *Solar Energy*, 2019, 193, pp.637-653. 10.1016/j.solener.2019.09.082 . hal-02368566

**HAL Id: hal-02368566**

<https://hal.univ-reunion.fr/hal-02368566v1>

Submitted on 21 Dec 2021

**HAL** is a multi-disciplinary open access archive for the deposit and dissemination of scientific research documents, whether they are published or not. The documents may come from teaching and research institutions in France or abroad, or from public or private research centers.

L'archive ouverte pluridisciplinaire **HAL**, est destinée au dépôt et à la diffusion de documents scientifiques de niveau recherche, publiés ou non, émanant des établissements d'enseignement et de recherche français ou étrangers, des laboratoires publics ou privés.



Distributed under a Creative Commons Attribution - NonCommercial 4.0 International License



31 **Keywords:** Mirrored Light Pipe; Experiment; Tubular Daylight Guide Systems; Review;  
32 Photometrical analysis; Daylight

33

## 34 **Nomenclature**

$\tau_{TDGS}$	Transmission coefficient of the light pipe	[-]
$\rho_{LP}$	Internal reflectivity coefficient	[-]
$\rho_{moy}$	Average reflection coefficient of the walls test cell's	[-]
$\rho_{PV}$	Wall reflection coefficient	[-]
$A_p$	Aspect ratio, ratio between length L and diameter D of the light pipe	[-]
$A_i$	Reference of luxmeters position's inside the test cell	[-]
D	Euclidean distance (diffuser - point to illuminate)	[m]
DPF	Daylight Penetration Factor, ratio between indoor and outdoor illuminance	[-]
H	Vertical height of the diffuser	[m]
$k_t$	Brightness index	[-]

## 35 **1. Introduction**

36 Nowadays, due to climatic and energetic concerns, it is crucial to building sector to provide  
37 many solutions. The challenge is to limit the impact of buildings on energy consumption even more so  
38 greenhouse gas emissions which are responsible for global warming. That is why, it is essential to  
39 conduct investigations of passive lighting systems to use natural lighting as possible, to increase both  
40 visual and thermal comfort in buildings, and therefore help to reduce both light and HVAC energy use.  
41 From a health standpoint, artificial lighting tends to suppress melatonin production, thus ensuring  
42 increased vigilance and therefore, an improvement in work performance. The harmful effect is  
43 occupants cannot be in a serene surrounding. The intake of daylighting can balance this trend by  
44 ensuring a space of qualities both in production and in the occupant's welfare. In 1986, in Australia  
45 appeared the first innovative device in daylighting: the highly reflective light pipe, commonly known as  
46 MLP, for Mirrored Light Pipe. This technology seems to respond to energetic and health criteria. Light  
47 pipe allows daylight to be transported and distributed in dark rooms far from traditional openings. They  
48 offer the advantage of minimizing light loss while limiting heat transmission.

49 The behavior of a light pipe can be affected by 3 intrinsic factors and 1 external factor: (i) the  
50 collection of daylight (via the collector) (ii) transmission (via the tube), (iii) diffusion (via the diffuser and  
51 the area to be illuminated) and (iv) the environment (weather conditions, solar geometry, masks).

52 Light pipe has attracted considerable interest for nearly 30 years. Thanks to the beneficial effects  
53 they provide: reduction in energy consumption, quality of transmitted light, limitation of heat input or,  
54 architectural interests. In 1990, Tubular Daylight Guide Systems (TDGS) were judged by Littlefair as the  
55 most innovative technology in daylighting (Littlefair, 1990). Many experimental and numerical studies  
56 have been carried out to understand the device better. As experience can guide modeling, we conduct a  
57 literature review from 1990 to the present by targeting discovery points. The objective is to take stock of  
58 experimental knowledge about the light pipe and contribute to the understanding.

### 59 **1.1 Overall efficiency of the light pipes and energy-saving potential**

60 In 1997, Shao (Shao et al., 1997) presented an experimental study on the performance of light  
61 pipe in the United Kingdom during the winter season. They showed that the potential for energy saving  
62 is nearly 30 %, and can even increase significantly in the summer period thanks to day length.

63 Oakley continued the study by highlight the performance of 6 light pipes installed in 3 different  
64 areas (store, office, and housing) in Leicestershire, England (Oakley et al., 2000). The results showed  
65 that the most effective light pipe is straight, short with a low aspect ratio  $A_p$ . The author has noted that  
66 if the diameter increases, the device will probably be more efficient. It also highlights the impact of the  
67 light pipe on the energy savings achieved. For example, for an office which required lighting level (300  
68 lux), it could be provided whole of the day by the light pipe. Oakley also pointed out that the device  
69 affects user satisfaction with the visual comfort that creates a healthier environment.

70 Based on a coupling of light pipe and artificial lighting (LED), Ji (Ji et al., 2016) studied and  
71 improved by simulation, an underground car park at Dalian Nationalities University of China. The  
72 author showed that the hybrid lighting system allows an annual energy saving of 60.4 %.

73 The same year, Malet-Damour (Malet-Damour et al., 2016) proposed to compare the  
74 performance of the light pipe to traditional artificial lighting. It was noted that in a clear sky, the light  
75 pipe could deliver the equivalent of 10 incandescent bulbs or 5 compact fluorescent bulbs. The light

76 pipe provides an energy savings of 560 Wh, where artificial lighting is only be used 43% of the time (for  
77 a halogen bulb of 70 W).

78 Other studies have also shown the potential of light pipe (Li et al., 2010; Samuhatananon et al.,  
79 2011; Su et al., 2012; Thakkar, 2013; Wu and Li, 2012).

## 80 **1.2 Parameters related to the illuminated area: colors and dimensions**

81 The wall colors have a notable impact on light distribution due to reflection phenomena.  
82 Indeed, the better the reflection coefficient, the higher the number of reflection of incoming light ray  
83 (Descartes law), the better light distribution.

84 This observation allows to adapt the configuration of the room to limit sunspot or dark zone  
85 inside, and improved light distribution on the whole workplane. Opposite, dark colors increase the  
86 absorption coefficient.

87 In 1997, Shao (Shao et al., 1997) studied the performance of a light pipe under overcast or clear  
88 skies. He showed that the color of the walls of the illuminated area had a substantial effect on the  
89 internal illuminance. As a comparative element, he defined the ratio of indoor to global outdoor  
90 illuminance. For a white room, this ratio is on average 14 % (under overcast conditions). For black walls  
91 and the same weather conditions, this ratio can be as high as 4 %. A ratio of 7 % for white walls versus 2  
92 % for black walls is also announced for clear sky conditions.

93 This trend is verified in a parametric analysis conducted by Zhang in 2002 (Zhang, 2002) but  
94 remains very limited. Indeed, using the DPF model as also described in (Malet-Damour et al., 2016),  
95 Zhang specified that its influence does not exceed more than 5 % in the indoor lighting balance.

96 In 2006, Chella (Chella et al., 2006) proposed a comparative study between the results of  
97 numerical and experimental analysis (reduced scale with an artificial sky) for different wall reflectivities  
98 (light and dark). The software used for this study were ADELIN 3.0 (International Energy Agency,  
99 2002), ENERGY PLUS (DOE et al., 2016) and ECOTECT (Autodesk, 2008). The authors also  
100 considered 2 types of sky: clear and overcast. For a clear sky, Chella showed that indoor reflected  
101 component has an impact ranging from 19.4 % to 37.8 % (depending on the position in the place).

102 As for the geometric aspect, Zhang (Zhang et al., 2002) showed that the performance of the  
103 tubular device depends strongly on (i) the Euclidean distance  $D$  and (ii) the vertical height of the  
104 diffuser  $H$ . The author demonstrated that in real-life situations, the diffuser of the light pipe reacts more  
105 like a point source than a finite surface. The illumination achieved inside the room is proportional to  
106  $(H/D)^{1/3}$  and inversely proportional to  $D^2$  (Bouguer's law).

### 107 **1.3 Parameters related to the light pipe**

108 In this section, it was noted in the literature that parameters relatives to the light pipe have a  
109 notable impact on the quality or quantity of transmitted light. The light pipe could be considered as a  
110 black box with several parameters which can affect the light collection, distribution, and quality. Among  
111 them (i) the position and inclination of the collector (ii) the presence of dome deflector (iii) the type of  
112 surface for the tube straight or elbowed and (iv) the nature of diffuser has been studied since 2002.

#### 113 1.3.1 Impact of the position and orientation of the collector and its shape

114 In 2008, Wu (Wu et al., 2008) conducted an experimental analysis of the performance of 1  
115 lateral and 2 zenithal light pipes. Measurements were taken at the same time for each process under real  
116 weather conditions (sunny winter day in Beijing, China). If no masks obstruct access to daylight, the  
117 results showed that the lateral light pipe offers better results than the zenithal device. A similar study  
118 carried out by Duc Hien showed the efficiency of a collector placed on the façade was also (Duc Hien  
119 and Chirarattananon, 2009).

120 In 2012, Kocifaj (Kocifaj et al., 2012) published a study demonstrating the optimal  
121 configuration to take advantage of the nominal efficiency of a bent light pipe. It specifies that maximum  
122 efficiency is achieved when the collector is oriented towards the solar path and pointed towards the sun.  
123 It showed that straight pipe with horizontal collectors is less efficient than a light pipe with a collector  
124 inclined towards the sun for clear skies. However, in cloudy skies, the straight pipe captures more of the  
125 celestial illuminance.

126 Sharma (Sharma et al., 2018), with a numerical analysis, studied the optimal geometric shape of  
127 the collector. The study showed that a  $6^\circ$  angle of inclination in the lower part of the collector increases  
128 the performance of the device.

129 1.3.2 Impact of a deflector in the collector

130 Additional accessories, as light deflector associated with the light collection, increase light  
131 capture and significantly improve the efficiency of the light pipe. Azad (Azad and Rakshit, 2018)  
132 highlighted the impact of this process on the performance of the light pipe in India. He showed that  
133 changing the position of the light deflector can improve the efficiency of the device by more than 2 %.

134 1.3.3 Link between the light spectrum and the colors of the transmitted light

135 The light intensity of a source influences the qualitative perception of ambiances. However, the  
136 color of the light delivered has an essential aspect. It is generally assumed that the spectral variations  
137 generated by MLP devices do not affect the color of the transmitted light. In 2014, Nilsson (Nilsson et  
138 al., 2014) studied and confirmed this hypothesis using spectrophotometer measurements and numerical  
139 study for direct and diffuse illuminance. It should be noted that the author ignored the collection and  
140 diffusion mechanism. The MLP appears to have achromatic properties.

141 1.3.4 Impact of optical and geometric parameters of the light pipe

142 In 1998, Shao (Shao et al., 1998) studied the performance of light pipe installed in a dozen  
143 buildings in the United Kingdom. The performance of the devices was evaluated for 4 types of  
144 buildings. The light pipe all had a moderate aspect ratio  $A_p$ , and allowed indoor illuminance greater  
145 than 450 lux, with a DPF of about 1 %. It is reduced by 0.1 % in the case of a thin and long pipe with  
146 an elbow. The author concluded that large diameter pipe should be used as often as possible.

147 A few years later, Ellis (Ellis et al., 2004) showed the influence of the aspect ratio  $A_p$  on the  
148 transmission coefficient  $\tau_{TDGS}$  for several light pipe reflectivities. Indeed, in his inter-software  
149 comparative study (ENERGY PLUS (DOE et al., 2016) VS. FSEC (McCluney, 2003)), he found that the  
150 increase in the aspect ratio causes an exponential drop in transmittance. For example, for a  $\rho_{LP}$   
151 reflectivity of 98 %, the transmission coefficient increases from 96 % ( $A_p=2$ ) to 88 % ( $A_p=8$ ). The  
152 decrease is all the more significant as the reflectivity of the pipe decreases: at  $\rho_{LP} = 92$  %, for an  $A_p$  going  
153 from 2 to 8, the variation of the transmission coefficient amounts to more than 27 %. Ellis showed that  
154 the length of the pipe mainly influences the aspect ratio.

155 For a given solar altitude and brightness index, the square radius of the tube affects the amount  
156 of incoming light. Also, the aspect ratio of the light pipe and the solar altitude influence the  
157 transmittance of the device (Zhang et al., 2002).

158 Maňková's study could support the conclusion of Ellis. The author surveyed MLP straight light  
159 pipe (Maňková et al., 2009). He showed the impact of geometric and optical parameters (diameter,  
160 length of the pipe, reflectivity) on the light transmission efficiency numerically. Under direct  
161 illuminance (clear sky type), as the diameter of the tube increases, the efficiency of the device increases  
162 logarithmically. Thus, tube diameter of 20 cm generates a transmission coefficient  $\tau_{\text{TDCS}}$  of 80 %  
163 compared to 87.5 % for a pipe of 80 cm. Also, when the reflectivity  $\rho_{\text{LP}}$  increases, the efficiency increases  
164 linearly ( $\tau_{\text{TDCS}} = 71.5$  % for a tube with a  $\rho_{\text{LP}}$  of 94 %, against 92 % for a reflectivity of 99 %).

165 On the other hand, the increase in the length of the pipe leads to an exponential decrease in  
166 luminous efficacy. A 1.0 m long tube results in a transmission coefficient  $\tau_{\text{TDCS}}$  of 89 % compared to 58  
167 % for a pipe length of 5.0 m. The observation remained the same for diffuse illuminance (overcast sky),  
168 but less pronounced than for direct part. Maňková specified that these results are validated for the type  
169 of pipe studied and can evolve according to the reflectivity of the tube.

### 170 1.3.5 Impact of elbows of the light pipe

171 Based on straight and curved pipes (with a single elbow) and for elliptical or rectangular  
172 sections, Gupta (Gupta et al., 2001) have numerically studied this problem. He performed a ray-tracing  
173 simulation with variations in the radius of curvature. Gupta found that light propagation within the  
174 tube is concentrated in the central part for a straight section while it is predominant on the inner  
175 periphery for a section with an elbow.

176 In 2002, Carter (Carter, 2002) set up a study allowing him to compare experimental (in situ and  
177 laboratory) and predicted data for the performance of different light pipe configurations. Carter found  
178 that an elbow with an angle of 0 to 30 ° results in a loss of efficiency of nearly 20 % (at 30 °, -20 %).  
179 Between 30 ° and 90 °, the decrease in efficiency is smaller (about 5 % from 30 ° to 90 °).

180 The same year, Zhang (Zhang, 2002) showed that the light loss associated with the use of a 30 °  
181 bend was 20 % under overcast conditions. Similarly, Jenkins and Muneer (Jenkins and Muneer, 2004)



182 conducted a sensitivity analysis on the use of bent light pipe for 30 °, 60 °, and 90 ° inclinations. They  
183 found a slight difference in performance between these devices. They deduced an exponential  
184 relationship reflecting the losses associated with the transfer within the elbows.

185 In 2005, to model the performance of a light pipe, Jenkins (Jenkins et al., 2005) continued their  
186 study on the impact of elbows. He deduced a ratio of equivalence between the singular light loss caused  
187 by an elbow and the linear light loss of a straight pipe. Using experimental measurements on bends  
188 from 5 ° to 75 °, Jenkins proposed an equation to calculate the percentage loss for curves at the same  
189 angle. The year before, Van Derfolske and Hough (Van Derlofske and Hough, 2004) also studied the  
190 impact of elbows on light transmission through the light pipe. They found that a 50 ° bend results in a  
191 loss of flux of nearly 50 % while two 25 ° bends result in a loss of only 36 % of the luminous flux. The  
192 ratio between the bending and the light loss is not linear.

193 The CIE report (CIE, 2006) on the efficiency of light pipes recommended the use of a standard  
194 1.0 m long tube and the measurement of incoming and outgoing light fluxes. In this report, the experts  
195 used fluorescent lamps mounted on panels incorporating a sphere and 2 pipes connected by an elbow.  
196 Several elbow angles were selected for the study (0 °, 30 °, 60 °, 90 °, 2x30 °, and 2x90 °).

197 Su (Su et al., 2012) conducted an experimental study on commercial light pipes under real  
198 climatic conditions contradicting previous results. The experimental results showed that, at equal  
199 dimensions, the luminous flux at the exit of the curved light pipes is higher than the straight pipes for  
200 clear sky conditions. The results are confirmed numerically. The number of hours of illuminance  
201 accumulated between a straight and curved pipe also varies. The bent pipe is more efficient for luminous  
202 fluxes greater than 2000 lm. Below this value, the straight and curved pipes are equal.

### 203 1.3.6 Impact of the shape of the diffuser and diffusing surface

204 Zhang (Zhang et al., 2002) tested the impact of the type of diffuser on the evolution of the DPF.  
205 To do this, the author experimented with a straight diffuser and a curved diffuser. He noted that the  
206 DPF reached with the flat diffuser is higher than that achieved with the curved diffuser.

207 In 2008, Wu (Wu et al., 2008) experimentally studied 2 types of diffusers: a prismatic diffuser  
208 (diamond type) and an translucent diffuser (snow type). Experimental data showed that the light pipe

209 equipped with the translucent diffuser achieves better performance than the device with the prismatic  
210 diffuser.

211 A study similar to that of Wu was also conducted by Baroncini (Baroncini et al., 2010). He  
212 tested 2 types of polycarbonate diffusers, one characterized by a prismatic geometry, the other  
213 characterized by a radial geometry, but completely transparent in the center. The conclusions were the  
214 same as those of Wu.

215 Kennedy (Kennedy and O'Rourke, 2015) proposed and tested a new form of vertical light pipe  
216 containing lateral openings serving several levels of a building.

### 217 1.3.7 Impact on thermal comfort conditions

218 Williams (Williams and Dorville, 2014) experimentally studied the thermal performance of light  
219 pipe in a seminar room located in Beijing, China. The results showed that a significant temperature  
220 gradient during the day could increase energy consumption to maintain a temperature of 25 °C. Indeed,  
221 in clear sky, the diffuser temperature was 6.68 °C higher than the ambient temperature, and the  
222 collector nearly 4.45 °C warmer than the diffuser. At night, the author showed that the light pipe  
223 behaves like a thermal bridge because the temperature of the dome is always lower than the diffuser  
224 temperature and the room temperature at night.

## 225 1.4 Parameters related to the environment of the light pipe

### 226 1.4.1 Impact of outdoor illuminance level and seasonality

227 The behavior of a daylighting device depends naturally on solar radiation. Callow (Callow,  
228 2003), during this thesis, achieved a parametric analysis of the performance of light pipes. His  
229 measurements were made in Nottingham and Singapore, and allowed to develop models for evaluating  
230 the effectiveness of light pipes. He concluded that the efficiency of the light pipe was not always  
231 proportional to the external illuminance.

232 A few years later, Li (Li et al., 2010) continued the analysis, and experimentally studied the  
233 performance of straight light pipes equipped with sensors inside positioned according to different radii  
234 of a circle. It showed that the transmittance of the device is not a constant value for a given pipe. It

235 varies according to the amount of external illuminance. In this case, device efficiency (defining by the  
236 ratio between the outgoing and incoming luminous flux) ranged between 0.14 and 0.27.

237 Two years later, Kocifaj (Kocifaj et al., 2012) confirmed these results and showed the effect of  
238 seasonality on the behavior of the light pipe. In summer, the average luminous flux under the light pipe  
239 elbowed is only slightly higher than the luminous flux with a straight tube. In spring and autumn, it  
240 increases. For temperate climates, the author has also concluded that the devices transmit more light if  
241 they are curved.

242 Based on experimental data, Vasilakopoulou (Vasilakopoulou et al., 2017) analyzed the spatial  
243 and temporal variability of indoor lighting using clustering techniques. There is an exponential  
244 relationship between average and maximum indoor and outdoor illuminance levels.

#### 245 1.4.2 Impact of solar altitude, sky brightness index and angle of incidence of the 246 incoming beam

247 Zhang (Zhang et al., 2002; Zhang and Muneer, 2000) and Carter (Carter, 2002) experimentally  
248 studied the impact of solar altitude on the transmittance of the device. This meteorological parameter  
249 modifies the number of inter-reflections within the tube. As the solar altitude increases, the number of  
250 inter-reflections decreases, resulting in better transmittance. Wu (Wu et al., 2008) considered that solar  
251 altitude is the main factor affecting the performance of the light pipe. He concluded that the light  
252 distribution in a clear sky is asymmetrical and depends on the position of the sun. Zhang also pointed  
253 out that the brightness index  $k_t$  and solar azimuth can also affect indoor daytime illuminance,  
254 depending on the light pipe configuration (confirmed by (Darula et al., 2010)). In the tropics, the  
255 luminous efficiency of the light pipes is better due to the predominant high solar altitude and long  
256 sunshine duration. On the other hand, in temperate climates, and particularly in winter, these 2  
257 parameters do not make possible to take advantage of the performance of a light pipe, although  
258 necessary during this period (Darula et al., 2010).

259 Hansen (Garcia Hansen et al., 2009) showed that solar altitude impacts the angle of incidence  
260 of incoming rays. The light loss in a tube is related to the multitude of reflections that the wave  
261 undergoes. Consequently, a light beam with the most significant angle of incidence minimizes the

262 number of reflections and thus improves the performance of an MLP device. There are 2 solutions to  
263 achieve this objective: (i) expand the system components or (ii) improve the collection system. This  
264 finding was confirmed by Darula (Darula et al., 2010). Edmonds (Edmonds, 2010) also discussed  
265 another aspect of the impact of the angle of incidence of penetrating rays. The variation of this angle has  
266 a significant impact on the efficiency of the light pipe that can be related to the angular dependence of  
267 the reflectivity on the Fresnel surface (perfect smooth mirror). The trend is verified and confirmed  
268 through Swift's study (Swift, 2010). It showed that the transmittance of the light pipe decreases  
269 significantly during months when the incidence angles of penetrating rays are low (winter).

270         Few years later, Vasilakopoulou (Vasilakopoulou et al., 2017) used a statistical approach  
271 (clustering analysis) to confirm the existence of a correlation between the overall transmittance of the  
272 light pipe, the solar azimuth and the solar altitude in clear sky.

273         In 2018, Tsang (Tsang et al., 2018) confirmed Edmonds and Swift results by also specifying that  
274 light transmission is a monotonous function of solar altitude, except for low angles (winter, beginning,  
275 and end of the day).

#### 276                 1.4.3    Dissociate direct and diffuse illuminance

277         As we have seen in the last section, the type of sky has a notable impact on light distribution.  
278 Consequently, it is necessary to decompose the direct (significant in clear sky) and diffuse (major in an  
279 overcast sky) illuminance.

280         In 2009, Mohelnikova (Mohelnikova, 2009) conducted a study on a straight light pipe. It  
281 showed that the luminous flux at the diffuser outlet and the distribution of illuminance under the  
282 diffuser is uniform and symmetrical when the sky is overcast. In clear skies, this distribution is not  
283 directly uniform.

284         Two years later, Lo Verso (Lo Verso et al., 2011) showed with simulations under SkyVision that  
285 it is more accurate to decompose light (direct and diffuse). He justified it by means of an experiment on  
286 a Mirrored Light Pipe for 2 types of sky (overcast and clear).

287         The distinction between clear and overcast skies can be made by the solar altitude whose the  
288 influence in the clear sky is notable. Oh (Oh et al., 2013) showed using a diagram "Candela power

289 distribution curve - CDC" that the light distribution of the light pipe is directly related to the solar  
290 altitude. He concludes that the light pipe uses all the components of daylight (diffuse and direct), but  
291 that direct light influences the light distribution.

#### 292 1.4.4 Impact of condensation and dust

293 Dust and condensation that may form in light pipes can affect their performance. Wu (Wu et  
294 al., 2012) experimentally studied this link by measuring the transmitted luminous flux under 3 different  
295 conditions (cleanliness, dust, and condensation) and for clear and overcast sky conditions. The results  
296 showed that dust has a more significant impact on the performance of the device than condensation. In  
297 clear skies, condensation reduces transmission by 6.37 % compared to 15.31 % for dust. In overcast  
298 conditions, the cleanliness of the dome results in a reduction of 24.05 % compared to 17.2 % for  
299 condensation.

#### 300 1.5 Variability of all parameters

301 In 1995, Swift and Smith (Swift and Smith, 1995) studied the links between the design and  
302 material parameters for a circular MLP device. They calculated the transmission coefficient precisely by  
303 using an optical analysis of the propagation of light rays along a tube. The authors derived an equation  
304 involving the reflectivity of the pipe, aspect ratio, and angle of incidence of incoming rays. This study  
305 clearly showed that the performance of the light pipe depends on many parameters, which can  
306 themselves vary considerably.

#### 307 1.6 Originality of the paper

308 Table 1 summarizes all the studies identified from 1990 to 2019 and classified by theme.

309 All the studies reviewed were conducted under temperate or continental climatic conditions in  
310 the Northern Hemisphere. These experimental conditions made it possible to evaluate the behavior of  
311 the light pipes for nominal illuminance levels of around 100 Klux in clear sky. This paper presents the  
312 only experimental data in the southern hemisphere (different solar path) and for extreme sunlight  
313 conditions. In these climatic conditions, we come to refute, confirm, and bring a new perspective on the  
314 behavior of the Mirrored Light Pipe. We demonstrated the close link between the type of sky, the solar  
315 path, the indoor light distribution, and the lighting levels achieved. We also showed that the energy-

316 saving potential generated by the light pipe in tropical environments and associated with different colors  
317 of the area to be illuminated. We also proposed an experimental analysis of the interest of a solar  
318 concentrator placed in the dome of the device. We have also evaluated the impact on indoor lighting of  
319 a mandatory device in cyclonic areas of the globe: the anticyclonic sub-dome.

320 All these results offer an additional step forward in the understanding of the behavior of the  
321 Mirrored Tubular Daylight Guide Systems and contribute to the enhancement of this technology.

## 322 **2. Materials and methods**

323 As seen in the previous review, it is necessary to study the light pipe environments to  
324 understand their behavior. Reunion Island is very particular due to his intense solar irradiation, that is  
325 why, we choose to set up experimentation to verify and validate observations from the literature.

### 326 **2.1 Experiment set-up**

327 The measurements are carried out on an experimental cell, called LGI (Miranville, 2002), and  
328 located in Saint-Pierre, Reunion Island. The arrangement of the empirical support has been made  
329 considering the sun's path and promoting an orientation without obstacles to the wind. The LGI is  
330 oriented North/North-West ( $9^\circ$  N). Representing a small building of  $9 \text{ m}^2$ , it consists of vertical opaque  
331 walls made of composite panels, a glass door (north facade), a blind (hidden) and a horizontal ceiling.  
332 The dimensions are described in Figure 1. The sloping roof ( $20^\circ$ ) is made of corrugated night blue sheet  
333 metal. A Mirrored Light Pipe (SOLATUBE®) has been installed in the roof plane and is curved to  
334 ensure the horizontality of the diffuser. The walls of the device have an internal reflection coefficient of  
335 99.7 %. An impact study revealed that the far-mask effect was negligible.

### 336 **2.2 Measurement and data acquisition**

337 Daylight measurements are collected from AHLBORN type devices with their central data  
338 acquisition systems. These devices are synchronized with each other and record at the time step of a  
339 minute. The indoor illuminance is measured from 9 luxmeters, positioned as shown in Figure 2 so that  
340 each sensor is located on a circle of different diameter whose center is A0. The workplane is fixed at 10  
341 cm from the ground. The external luxmeters are used to measure global and diffuse illuminance (Figure  
342 3). The measurement of diffuse illuminance is ensured by the shadow ring designed in the laboratory,

343 called SHADECO. The procedure of conception and validation of this device is described in (Malet-  
344 Damour et al., 2018).

345 The test cell was adapted to correspond to each experimental scenario. By measuring indoor and  
346 outdoor illuminances, it was tried to confirmed or refuted the findings reviews about the influence of  
347 the type of sky on light distribution in the southern hemisphere. That is why the wall colors have been  
348 colored to black (deleted the reflection part of diffusing light). Also, by changing wall colors, it was  
349 possible to understand the impact of this parameter (the reflection coefficient) on the light level. Other  
350 scenarios were conducted to quantify the effects of 2 devices used to improve light collection (changing  
351 the position of a reflector in the dome) or to protect the light pipe (anticyclonic sub-dome).

352 All experimental scenarios were synthesized in Table 2.

### 353 **3. Results and discussion**

#### 354 **3.1 Solar deposit of climate study**

355 We carry out a brief climatic analysis of the environment in which the light pipe is positioned.  
356 The objective is to understand the solar potential of the city of Saint Pierre, Reunion Island. We seek to  
357 discern the annual evolution of the global outdoor illuminance measured with an external luxmeter.

358 Figure 4 highlights a significant seasonality in global illuminance corresponding substantially to  
359 the seasons present in Reunion Island. The southern summer extends from November to April. This is  
360 the period when the solar deposit is most abundant. The days are longer, with a maximum illuminance  
361 frequently between 150 Klux and 200 Klux (in clear sky), and the beginning and end of the day close to  
362 50 to 75 Klux.

363 The southern winter, from May to October, is the period when the maximum illuminance is  
364 around 100 to 125 Klux. The days are shorter. Mornings and ends of the days provide less than 75 Klux  
365 of light. The trend changes as early as August when the days recover from hours of sunshine.

366 Seasonality does not seem to be properly related to the lighting needs. Indeed, a system using  
367 daylight within a building will offer significant efficiency from September to April, and less for the rest  
368 of the year.

#### 369 **3.2 Impact of sky type on light distribution**

370 The objective was to see the impact of the type of sky on the light distribution within the room  
371 (see Table 2, scenario N°1). All the inner walls of the cell are covered with a black wallpaper (reflection  
372 coefficient close to 0.05). The objective is to eliminate factors that can influence the light distribution  
373 within the room. The part of the internal reflections being negligible, the light pipe is then the only light  
374 source in the room (Figure 5).

375 The day of September 23, 2014 presents a clear sky with a maximum global outdoor  
376 illuminance of 120 Klux. The contribution of the celestial vault is less than 17 Klux (see Figure 6). These  
377 conditions are typical of sunny conditions for a clear day in winter on Reunion Island.

378 Under the diffuser (A0), we notice that the maximum values for indoor illuminance are not at  
379 solar midday (marked by a vertical blue dotted line). When the global outdoor illuminance reaches its  
380 maximum during the day, the light pipe does not generate an illuminance that can be considered as a  
381 maximum in the area. Indeed, we can see that at this same time, the A1 sensor has illuminance values  
382 close to 600 lux. The other sensors do not seem to show any particular event.

383 Overall, if we refer to the hourly evolution of the illuminance for each instrument, we see between 1  
384 and 2 unsynchronized peaks of illuminance appear during the day. These events are localized. Their  
385 evolution is linked to time and space. We assume that these are "sunspots" depending on the position of  
386 the Sun.

387 The distribution of illuminance on the ground within the room is presented for different hours  
388 (Figure 7). This mode of representation is commonly used in lighting thanks to the ease with which a  
389 light distribution can be imaged on a work surface.

390 We select representative hours, where the indoor illuminance is important enough to allow us  
391 to observe a phenomenon. At 9:00 am, the average illuminance is about 150 lux, and the light  
392 distribution appears to be angularly uniform. In the following hours, the distribution no longer seems to  
393 follow Lambert's law because the maximum illuminances change position over time. At 11:00 am in  
394 particular, the maximum illuminance is located southeast while the Sun is oriented northeast. When the  
395 Sun is in the axis of the light pipe (due North), the distribution seems to refocus around the central  
396 point (under the diffuser in A0). The following hour we notice an opposite position to the 11:00 am



397 event: the maximum illuminance is located South-West while the Sun is located in the North-West axis.  
398 The following hours resemble the first hours of the day by not marking any particular orientation in the  
399 distribution of indoor illuminance.

400 In all likelihood, the position of the Sun impacts the light distribution, and more precisely,  
401 direct illuminance does not follow the law of logical diffusion because the source moves during the day.

402 Visually, we can confirm these results. Figure 8 shows solar bands marked by more intense  
403 illuminance. If a light band is positioned on one of the sensors, it will detect high illuminance without  
404 the phenomenon being visible through the other instruments. Unlike Baroncini's findings (Baroncini et  
405 al., 2010), these pictures clearly shows that the diffuser does not allow a distribution according to  
406 Lambert's law. Maybe these solar bands are not high enough to be visible under lower solar irradiation.

407 To conclude, direct lighting is not distributed rigorously throughout the room. It is localized  
408 and generates light bands with high illuminance levels. In a global approach, the phenomenon observed  
409 being localized, it would be necessary to consider the global impact of these "sunspots".

410 We are now looking to visualize the photometric phenomena for an overcast day (November 30,  
411 2014). As can be seen in Figure 9, the global outdoor illuminance follows the trend of diffuse part. A  
412 maximum illuminance is recorded at 10:00 am and may correspond to a partial clearing of the clouds.  
413 Otherwise, the outdoor global and diffuse illuminances are around 50 Klux between 9:30 am and 2:30  
414 pm.

415 As the direct outdoor illuminance is close to zero, we notice that the time evolution at each  
416 measurement point is similar (Figure 9). To justify this observation, we focus on an event (marked by a  
417 red dotted vertical line). This event could correspond to the passage of a denser cloud. It is reflected  
418 inside the cell at the same time. We find that the further away the measurement point is far from the  
419 diffuser, the more the illuminance decreases proportionally. This behavior suggests a distribution from  
420 an orthotropic light source.

421 Overall, we notice that in overcast skies, the daily evolution of indoor and outdoor illuminances  
422 correctly follows the same progression.

423 Using the same methodology as for clear sky, we plot the evolution of light distribution within  
424 the room for different hours (Figure 10). In the configuration of an overcast sky, the illuminance levels  
425 achieved are much lower than those obtained in clear sky. The average deviation under the diffuser is  
426 close to 200 lux.

427 During the hours of the day, the illuminance distribution does not change. At 9:00 am, the  
428 illuminance in the center of the room increases (200 lux), then decreases in the following hours to  
429 increase again at 1:00 pm. Overall, we confirm the observation made in the previous curves: the  
430 luminance increases, but remains stable according to the direction of emission: the illuminance  
431 distribution follows Lambert's law.

432 In conclusion, the light pipe can be considered as a black box that reflects the input/output  
433 load, with one inversion. In this way, the diffusion within the room can be uniform in an overcast sky,  
434 and directional in a clear sky in extreme solar irradiation environments.

### 435 **3.3 Impact of the color of the area to be illuminated: evaluation of the energy-saving** 436 **potential**

437 This study consists of varying the colors of the interior walls of the area to be illuminated and  
438 understanding their impact on indoor lighting and artificial lighting autonomy (see Table 2, scenarios  
439 N°1 to 5). We will use the average reflection coefficient to compare the different situations. This  
440 parameter is calculated retain proportion to the surfaces of each color. We assume that the reflection  
441 coefficients of the walls are constant and known: (i) white wall reflection coefficient: (ii) black wall  
442 reflection coefficient: (iii) grey wall reflection coefficient: .

443 In this way, Table 2 shows the values of this parameter according to the experimental scenarios.

444 To take into account the impact of this parameter on the energy autonomy of the room, we  
445 consider the room as an office which required a minimum lighting level of 200 lux (according to the  
446 European standard EN 12 464-1). That's why we calculate the percentage of time the lighting level is  
447 higher than needed.

448 Our reference will be scenario N°5 (5 white walls and 1 grey wall). We will compare events from  
449 one year to another. The reference case data cover the years 2013 and 2014, while the other scenarios

450 were conducted from 2014 to 2015. By comparing the same dates for different years, we are assured that  
451 the solar path is theoretically similar. Thus, the solar altitude and azimuth can deviate from the  
452 influential parameters. We will use an hourly ratio of the average indoor illuminance (average of the  
453 hourly illuminance recorded by the indoor luxmeters) to the outdoor global illuminance. This ratio gives  
454 a general trend in the time evolution of illuminance in terms of usefulness, which excludes the impact  
455 of direct part on the light distribution within the room. We select days with similar outdoor global  
456 illuminance profiles from one year to the next.

#### 457 **Comparison of scenarios N°1 and 5**

458 The days of November 21, 2013 and November 21, 2014 are clear sky days (Figure 11). The  
459 hourly profile of outdoor global illuminance from one year to another is similar with a maximum  
460 illuminance of around 131 Klux. The patterns of the ratios are related to a close coefficient: the part  
461 with the highest reflection coefficient has the highest rate. Indeed, by increasing the average reflection  
462 coefficient from 0.05 to 0.699, we increase the average indoor illuminance by 47 % on average. When  
463 the cell has its black walls, the light pipe allows autonomy in lighting nearly 3 % of the time compared  
464 to 37 % for the case study N°5. This means that 3 % of the time we are above 200 lux, the minimum  
465 required level. As a result, the artificial top-up is inevitable 97 % of the time (in clear sky) compared to  
466 63 % for a room with white walls.

#### 467 **Comparison of scenarios 2 and 5**

468 March 16, 2015 is a clear day. The same day of 2014 is partially covered (Figure 12). These two  
469 days have the most comparable profiles of the measurement period of study case N°2. The maximum  
470 outdoor global illuminance is about 120 Klux. The pattern of the ratios of the studied cases is similar.  
471 The increase in the average reflection coefficient from 0.162 to 0.699 increases the average useful indoor  
472 illuminance by 42 %. The scenario N°2 allows being autonomous almost 10 % of the time compared to  
473 32 % for the case N°5. For an area with 5 black walls and 1 white wall, artificial lighting is unavoidable  
474 90 % of the time (in clear sky) compared to 68 % for a room with white walls.

#### 475 **Comparison of scenarios 3 and 5**

476           The days of March 24, 2014 and March 24, 2015 are clear-sky days with a similar time profile  
477 for global outdoor illuminance (Figure 13). The maximum illuminance is about 121 Klux. With one  
478 factor aside, the ratios are similar. By increasing the average reflection coefficient from 0.274 to 0.699,  
479 we increase the average indoor illuminance by 36 % on average and thus be energy self-sufficient 17.5 %  
480 of the time compared to 39.8 % in case N°5. The use of artificial lighting is unavoidable 82.5 % of the  
481 time (in clear sky) compared to 60.2 % for a room with white walls.

#### 482           **Comparison of scenarios 4 and 5**

483           The days of April 3, 2014 and April 3, 2015 are also clear sky days with a similar time profile for  
484 global outdoor illuminance (Figure 14). The maximum illuminance is about 113 Klux. Both days have a  
485 ratio profile identical to a factor. By increasing the average reflection coefficient from 0.385 to 0.699, we  
486 increase the average indoor illuminance by 35 % on average. It reduces the artificial lighting level to  
487 82.3 % of the time (in clear sky) compared to 60.8 % for a room with white walls.

#### 488           **Synthesis**

489           Overall, we find that the reflection coefficient of the walls has a considerable impact on the  
490 average illuminance within the area. The more we have an area with clear walls, the more we will  
491 increase the useful average illuminance. This is due to the absorption coefficient of the black walls,  
492 considerably limiting the internally reflected illuminance.

493           This observation can be illustrated in Figure 15. By moving from a room with black walls to a room with  
494 white walls, we can double the level of indoor illuminance and thus limit the use of an additional  
495 artificial lighting system. This observation makes it possible to complete what the literature had revealed  
496 to us in the previous section (Chella et al., 2006; Shao et al., 1997; Zhang, 2002).

#### 497           **3.4 Impact of the position of a dome deflector**

498           In the southern hemisphere, the northern orientation is preferred to increase the performance  
499 of solar devices. At the summer solstice (December 21), the Sun rises in the East/South-East and sets in  
500 the West/South-West. At the winter solstice (June 21), the Sun rises in the northeast and sets in the  
501 northwest. A deflector device, placed in the dome, maximizes the collection of solar rays.

502 We wanted to evaluate the impact of deflector positions on the amount of light inside the area  
503 to be illuminated for the configuration of the light pipe studied (curved tube with the collector in the  
504 plane of the roof). That is why, measurements were made by positioning the deflector in different  
505 orientations (North, South, East, and West), as described in Table 2, with the scenarios N°6 to 9).  
506 Figure 16 shows the different positions tested and the solar-path of the study city (Saint-Pierre,  
507 Réunion). “North” orientation means that the deflector is facing south (back to the north).

508 Before identifying the most optimized orientation of the deflector to increase the collection of  
509 solar rays, we seek to evaluate the impact of this device on the supply of daylight within the area to be  
510 illuminated. We compare the effect of the deflector positioned to the South (facing the North,  
511 orientation recommended by the manufacturer, scenario N°7) for a clear sky when the walls of the room  
512 are black. The deflector-free measurements were obtained in December 2014. Measurements with  
513 deflector are collected during February 2015, at the rate of one week of collection per orientation. To  
514 rule out the impact of the solar-path, we will use the ratio between the useful average indoor and global  
515 outdoor illuminance, averaged over the measurement period.

516 We can see that the deflector increases the amount of daylight (Figure 17). However, the device  
517 does not significantly improve the performance of the light pipe.

518 Concerning the impact of the deflector orientation, and concerning the experimental data, we  
519 find for each a clear measurement period, intermediate and cloudy sky days. Since the solar path is not  
520 the same from one day to the next, and therefore from one configuration to another, we determine the  
521 impact of the deflector position from an average ratio. This ratio is the ratio between the indoor and  
522 global outdoor average illuminance during the period. With measurements in diffuse illuminance, and  
523 neglecting the part of the reflected illuminance (no mask to consider), we obtain direct illuminance  
524 (from the subtraction of diffuse from global illuminance). We apply an impact ratio to the previously  
525 calculated average one by determining the proportion of diffuse and direct impact on indoor  
526 illuminance. Then, we can learn, by orientation, two essential pieces of information (i) the relationship  
527 between the position of the deflector and the overall efficiency (ii) the relationship between the  
528 effectiveness of the deflector, its location and the type of illuminance (direct or diffuse).

529 Figure 18 confirms that positioning the deflector in the South (deflector facing North, scenario  
530 N°7) increases the efficiency of the light pipe. The figures are still close for the North position (facing  
531 South, scenario N°6) this being probably because the collector is inclined in the plane of the roof.  
532 Moreover, at this time of year (see Figure 16, red line of the solar path), the Sun passes from East to  
533 West with an almost similar part of the day when the collector sees the Sun in the South and North.  
534 The East (scenario N°9) and West (scenario N°8) positions are optimal for capturing morning or late  
535 afternoon light rays, respectively.

536 By looking at the differentiation of diffuse and direct illuminance, we can see that (i) direct part  
537 has a more significant impact on the level of indoor illuminance for a deflector positioned in the South  
538 (scenario N°7), (ii) diffuse part is predominant in the supply of light for a deflector in the North. For the  
539 East and West orientations, diffuse and direct illuminances have a similar impact.

540 We deduce that it is preferable to orient the deflector to the North or South (in the case where  
541 the collector is inclined to the North) for the Southern Hemisphere. This position can also change  
542 during the year, depending on the weather conditions. Tropical summer is marked by more cloudy days  
543 (predominant diffuse illuminance), the deflector could be placed in the North, and conversely in winter  
544 (mostly clear sky).

### 545 **3.5 Tropical arrangement: impact of the anticyclonic sub-dome**

546 During a tropical cyclone, several extreme phenomena can damage or even destroy a structure  
547 (wind gusts, torrential rain, floods, debris carried by wind or rivers, landslides, etc.). In general, an  
548 anticyclonic construction is designed to withstand the direct effects of wind, airborne debris, and rain. It  
549 is, therefore, a question of designing and building constructions with a sufficient level to ensure the  
550 three essential functions: mechanical resistance, shelter from wind and rain. That is why it is necessary  
551 to protect the fragile areas of a building. The technological difficulty is to establish a compromise  
552 between resistance and tightness without hindering the primary function. The light pipe, because of its  
553 position on the building represents a point of fragility. There is an anticyclonic sub-dome to compensate  
554 for shocks related to flying debris. Reunion Island is one of the areas where this is necessary.

555 This case study (see Table 2, scenario N°10) is specific to geographical areas subject to  
556 anticyclonic provisions. The sub-dome is installed on the light pipe, as shown in Figure 19. We are  
557 trying to evaluate the impact of this sub-dome on the overall performance of the light pipe.

558 As before, we will base our analysis on the ratio between the average indoor and outdoor  
559 illuminance. This will allow comparing days whose solar geometry will not be the same. We will examine  
560 the average daily ratio for configurations with and without the anticyclonic sub-dome for a test cell with  
561 black walls. We only use clear sky days to assess the maximum impact of the sub-dome.

562 We find that the anticyclonic sub-dome has an impact on the transmission factor of the light  
563 pipe  $\tau_{\text{TDCS}}$  (Table 3). This additive element reduces light transmission by an average of  $9.2 \% \pm 3 \%$ .  
564 While it may be negligible for indoor illuminance achieved in clear sky, it will be essential to take into  
565 account its contribution in the overcast sky.

#### 566 **Conclusions and perspectives**

567 A literature review permitted to identify and to class each parameter, which could have an impact  
568 on light pipe performance and light distribution inside the illuminated area. It was noted that  
569 geometric, optic or climatic parameters relatives to (i) illuminated area (ii) light pipe (iii) environment of  
570 the device, have a notable impact on indoor light distribution and light level. All the studies reviewed  
571 were conducted under temperate or continental climatic conditions in the Northern Hemisphere.

572 This paper presents the only experimental data in the southern hemisphere (different solar path)  
573 and for extreme sunlight conditions. It permitted to understand and apprehend the behavior of the  
574 light pipe under the intensive climatic condition of Reunion Island. We found that the light  
575 distribution within the room was strongly related to the type of sky. In cloudy skies, the diffuser behaves  
576 like an orthotropic source whose diffusion follows a Lambertian law. Indeed, the light pipe acts as a  
577 black box. The profile of the indoor illuminance is similar to the profile of the outdoor. In a clear sky,  
578 the observation is no longer valid. The indoor lighting becomes directional, linked to the position of the  
579 Sun. Lambert's law is no longer valid.

580 This work also allowed to test other experimental configurations such as the variation of the colors  
581 of the illuminated area. We noted that the increase in the average reflection coefficient could result in a  
582 significant increase in the average indoor illuminance. Energy autonomy is the most revealing parameter  
583 of the study, showing that switching from a dark to a bright room avoided the use of an artificial light  
584 source no less than 37 % of the time.

585 It was also studied the optimal position of a reflector placed in the dome to increase the collection  
586 of solar rays. Reunion Island is located in the southern hemisphere at latitude 21 °S. In this region of  
587 the globe, and given the sun path, it is common to orient solar devices to the North. The study  
588 confirmed that our collector with deflector, inclined in the roof plane (20 °), is the most efficient when  
589 facing North. A lack of orientation could lead to a drop of nearly 20 % in the light transmission of the  
590 light pipe.

591 Considering the location and cyclonic concerns of Reunion Island, it was tried to evaluate the  
592 impact of an anticyclonic sub-dome placed under the primary collector. Experimental results concluded  
593 that it reduces 9.2 % of the average transmission of the light pipe.

594 This paper was intended to contribute to the experimental photometric study of Mirrored Light  
595 Pipes. A thermal experimental study has starting to understand the impact of the light pipe on indoor  
596 ambient conditions and the user thermal comfort in the tropical climate.

## 597 **References**

598 Autodesk, 2008. ECOTECT ANALYSIS.

599 Azad, A.S., Rakshit, D., 2018. Experimental Study of Tubular Light Pipe System: Influence of Light  
600 Reflector on Its Performance, in: Sayigh, A. (Ed.), Transition Towards 100% Renewable Energy:  
601 Selected Papers from the World Renewable Energy Congress WREC 2017, Innovative Renewable  
602 Energy. Springer International Publishing, Cham, pp. 21-30. [https://doi.org/10.1007/978-3-319-](https://doi.org/10.1007/978-3-319-69844-1_3)  
603 [69844-1\\_3](https://doi.org/10.1007/978-3-319-69844-1_3)

604 Baroncini, C., Boccia, O., Chella, F., Zazzini, P., 2010. Experimental analysis on a 1:2 scale model of the  
605 double light pipe, an innovative technological device for daylight transmission. Sol. Energy 84,  
606 296-307. <https://doi.org/10.1016/j.solener.2009.11.011>



607 Callow, B.J., 2003. Daylighting Using Tubular Light Guide Systems. University of Nottingham.

608 Carter, D.J., 2002. The measured and predicted performance of passive solar light pipe systems. *Light.*  
609 *Res. Technol.* 34, 39-51. <https://doi.org/10.1191/1365782802li029oa>

610 Chella, F., Zazzini, P., Carta, G., 2006. Compared numerical and reduced scale experimental analysis on  
611 light pipes performances ., in: *Proceedings of the 5 Th International Conference on Sustainable*  
612 *Energy Technologies {SET}*. pp. 1-6.

613 CIE, 2006. Tubular daylight guidance systems. Vienna. *Comm. Int. l'Eclairage* 173:2006, 3-38.

614 Darula, S., Kocifaj, M., Kittler, R., Kundracik, F., 2010. Illumination of interior spaces by bended  
615 hollow light guides: Application of the theoretical light propagation method. *Sol. Energy* 84,  
616 2112-2119. <https://doi.org/10.1016/j.solener.2010.09.003>

617 DOE, BTO, NREL, 2016. *Energy Plus*.

618 Duc Hien, V., Chirarattananon, S., 2009. An experimental study of a facade mounted light pipe. *Light.*  
619 *Res. Technol.* 41, 123-139. <https://doi.org/10.1177/1477153508096167>

620 Edmonds, I., 2010. Transmission of mirror light pipes with triangular, rectangular, rhombic and  
621 hexagonal cross section. *Sol. Energy* 84, 928-938. <https://doi.org/10.1016/j.solener.2010.03.001>

622 Ellis, P.G., Strand, R.K., Baumgartner, K.T., 2004. Simulation of Tubular Daylighting Devices and  
623 Daylighting Shelves in Energyplus, in: *Conference, I-U.N. (Ed.), SimBuild 2004*. Boulder,  
624 Colorado, pp. 1-8.

625 Garcia Hansen, V., Edmonds, I., Bell, J.M., 2009. Improving daylighting performance of mirrored light  
626 pipes: Passive vs. active collection systems, in: *PLEA 2009 - Architecture Energy and the*  
627 *Occupant's Perspective: Proceedings of the 26th International Conference on Passive and Low*  
628 *Energy Architecture*. Quebec City, Canada.

629 Gupta, A., Lee, J., Koshel, R.J., 2001. Design of efficient LightPipes for illumination by an analytical  
630 approach. *Appl. Opt.* 40, 3640-3648.

631 International Energy Agency, I., 2002. *ADELIN*E.

632 Jenkins, D., Muneer, T., 2004. Light-pipe prediction methods. *Appl. Energy* 79, 77-86.  
633 <https://doi.org/10.1016/j.apenergy.2003.11.003>

634 Jenkins, D., Muneer, T., Kubie, J., 2005. A design tool for predicting the performances of light pipes.  
635 Energy Build. 37, 485–492. <https://doi.org/10.1016/j.enbuild.2004.09.014>

636 Ji, S., Cao, G., Zhang, J., Yu, F., Li, D., Yu, J., 2016. Lighting design of underground parking with  
637 tubular daylighting devices and LEDs. Optik (Stuttg). 127, 1213–1216.  
638 <https://doi.org/10.1016/j.ijleo.2015.10.189>

639 Kennedy, D.M., O'Rourke, F., 2015. Experimental analysis of a scaled, multi-aperture, light-pipe,  
640 daylighting system. Sol. Energy 122, 181–190. <https://doi.org/10.1016/j.solener.2015.08.013>

641 Kocifaj, M., Kundracik, F., Darula, S., Kittler, R., 2012. Availability of luminous flux below a bended  
642 light-pipe: Design modelling under optimal daylight conditions. Sol. Energy 86, 2753–2761.  
643 <https://doi.org/10.1016/j.solener.2012.06.017>

644 Li, D.H.W., Tsang, E.K.W., Cheung, K.L., Tam, C.O., 2010. An analysis of light-pipe system via full-  
645 scale measurements. Appl. Energy 87, 799–805. <https://doi.org/10.1016/j.apenergy.2009.09.008>

646 Littlefair, P. j., 1990. Review Paper: Innovative daylighting: Review of systems and evaluation methods.  
647 Light. Res. Technol. 22, 1–17. <https://doi.org/10.1177/096032719002200101>

648 Lo Verso, V.R.M., Pellegrino, A., Serra, V., 2011. Light transmission efficiency of daylight guidance  
649 systems: An assessment approach based on simulations and measurements in a sun/sky simulator.  
650 Sol. Energy 85, 2789–2801. <https://doi.org/10.1016/j.solener.2011.08.017>

651 Malet-Damour, B., Boyer, H., Guichard, S., Miranville, F., 2017. Performance Testing of Light Pipes in  
652 Real Weather Conditions for a Confrontation with Hemera, in: Journal of Clean Energy  
653 Technologies. Hong Kong - Chine, pp. 73–76. <https://doi.org/10.18178/jocet.2017.5.1.347>

654 Malet-Damour, B., Guichard, S., Bigot, D., Boyer, H., 2016. Study of tubular daylight guide systems in  
655 buildings: Experimentation, modelling and validation. Energy Build. 129, 308–321.  
656 <https://doi.org/10.1016/j.enbuild.2016.08.019>

657 Malet-Damour, B., Guichard, S., Jean, A.P., Miranville, F., Boyer, H., 2018. SHADECO: A low-cost  
658 shadow-ring for diffuse measures: State of the art, principles, design and application. Renew.  
659 Energy 117, 71–84. <https://doi.org/https://doi.org/10.1016/j.renene.2017.09.083>

660 Maňková, L., Hraška, J., Janák, M., 2009. Simplified Determination of Indoor Daylight Illumination By

661 Light Pipes. *Slovak J. Civ. Eng.* 4, 22–30.

662 McCluney, R., 2003. Rating of Tubular Daylighting Devices for Visible Transmittance and Solar Heat  
663 Gain - Final Report. Cocoa, Florida.

664 Miranville, F., 2002. Contribution à l'étude des parois complexes en physique du bâtiment :  
665 modélisation, expérimentation et validation expérimental de toitures complexes incluant des  
666 produits minces réfléchissants en climat tropical humide. La Réunion.

667 Mohelnikova, J., 2009. Tubular light guide evaluation. *Build. Environ.* 44, 2193–2200.  
668 <https://doi.org/10.1016/j.buildenv.2009.03.015>

669 Nilsson, A.M., Jonsson, J.C., Roos, A., 2014. Spectrophotometric measurements and ray tracing  
670 simulations of mirror light pipes to evaluate the color of the transmitted light. *Sol. Energy Mater.*  
671 *Sol. Cells* 124, 172–179. <https://doi.org/10.1016/j.solmat.2014.01.049>

672 Oakley, G., Riffat, S.B., Shao, L., 2000. Daylight performance of lightpipes. *Sol. Energy* 69, 89–98.  
673 [https://doi.org/10.1016/S0038-092X\(00\)00049-9](https://doi.org/10.1016/S0038-092X(00)00049-9)

674 Oh, S.J., Chun, W., Riffat, S.B., Jeon, Y. Il, Dutton, S., Han, H.J., 2013. Computational analysis on the  
675 enhancement of daylight penetration into dimly lit spaces: Light tube vs. fiber optic dish  
676 concentrator. *Build. Environ.* 59, 261–274. <https://doi.org/10.1016/j.buildenv.2012.08.025>

677 Samuhatananon, S., Chirarattananon, S., Chirarattananon, S., Chirarattananon, P., 2011. An  
678 experimental and analytical study of transmission of daylight through circular light pipes.  
679 *LEUKOS - J. Illum. Eng. Soc. North Am.* 7, 203–219.  
680 <https://doi.org/10.1080/15502724.2011.10732147>

681 Shao, L., Elmualim, A.A., Yohannes, I., 1998. Mirror lightpipes: Daylighting performance in real  
682 buildings. *Light. Res. Technol.* 30, 37–44. <https://doi.org/10.1177/096032719803000106>

683 Shao, L., Riffat, S.B., Icks, W.H., Yohanne, I.S., 1997. A Study of Performance of Light Pipes Under  
684 Cloudy and Sunny Conditions in the UK. *Right Light* 1, 155–159.

685 Sharma, L., Ali, S.F., Rakshit, D., 2018. Performance evaluation of a top lighting light-pipe in buildings  
686 and estimating energy saving potential. *Energy Build.* 179, 57–72.  
687 <https://doi.org/10.1016/j.enbuild.2018.09.022>

688 Su, Y., Khan, N., Riffat, S.B., Gareth, O., 2012. Comparative monitoring and data regression of various  
689 sized commercial lightpipes. *Energy Build.* 50, 308–314.  
690 <https://doi.org/10.1016/j.enbuild.2012.03.053>

691 Swift, P.D., 2010. Splayed mirror light pipes. *Sol. Energy* 84, 160–165.  
692 <https://doi.org/10.1016/j.solener.2009.10.008>

693 Swift, P.D., Smith, G.B., 1995. Cylindrical mirror light pipes. *Sol. Energy Mater. Sol. Cells* 36, 159–  
694 168. [https://doi.org/10.1016/0927-0248\(94\)00172-3](https://doi.org/10.1016/0927-0248(94)00172-3)

695 Thakkar, V., 2013. Experimental study of Tubular Skylight and comparison with Artificial Lighting of  
696 standard ratings. *Int. J. Enhanc. Res. Sci. Technol. Eng.*, 6 2, 4–9.

697 Tsang, E.K.W., Kocifaj, M., Li, D.H.W., Kundracik, F., Mohelniková, J., 2018. Straight light pipes'  
698 daylighting: A case study for different climatic zones. *Sol. Energy* 170, 56–63.  
699 <https://doi.org/10.1016/j.solener.2018.05.042>

700 Van Derlofske, J.F., Hough, T.A., 2004. Analytical model of flux propagation in light-pipe systems. *Opt.*  
701 *Eng.* 43, 1503. <https://doi.org/10.1117/1.1753272>

702 Vasilakopoulou, K., Kolokotsa, D., Santamouris, M., Kousis, I., Asproulas, H., Giannarakis, I., 2017.  
703 Analysis of the experimental performance of light pipes. *Energy Build.* 151, 242–249.  
704 <https://doi.org/10.1016/j.enbuild.2017.06.061>

705 Williams, D., Dorville, J.-F., 2014. Investigating the Thermal and the Lighting Performance of Light  
706 Pipes for Sunny and Cloudy Conditions in Insular Tropical Climate. *Electr. Eng.* 2, 221–227.  
707 <https://doi.org/10.17265/2328-2223/2014.05>

708 Wu, Y., Jin, R., Li, D., Zhang, W., Ma, C., 2008. Experimental investigation of top lighting and side  
709 lighting solar light pipes under sunny conditions in winter in Beijing, in: Wang, A., Liao, Y., Song,  
710 A., Ishii, Y., Fan, X. (Eds.), 2008 International Conference on Optical Instruments and  
711 Technology: Advanced Sensor Technologies and Applications. p. 715710.  
712 <https://doi.org/10.1117/12.811992>

713 Wu, Y., Li, H., 2012. Experimental study on performance of top lighting solar light pipes in the meeting  
714 room in winter in Beijing. *Appl. Mech. Mater.* 178–181, 29–32.

715 <https://doi.org/10.4028/www.scientific.net/AMM.178-181.29>

716 Wu, Y.P., Wang, X.D., Chen, Z.G., Zhang, C.Y., 2012. Experimental Study on the Influence of  
717 Daylighting Performance of Solar Light Pipes by Dusts and Condensation, in: Sustainable  
718 Development of Urban Environment and Building Material, Advanced Materials Research. Trans  
719 Tech Publications Ltd, pp. 1096–1099. [https://doi.org/10.4028/www.scientific.net/AMR.374-](https://doi.org/10.4028/www.scientific.net/AMR.374-377.1096)  
720 [377.1096](https://doi.org/10.4028/www.scientific.net/AMR.374-377.1096)

721 Zhang, X., 2002. Daylighting Performance of Tubular Solar Light Pipes: Measurement, Modelling and  
722 Validation. Napier University of Edinburgh.

723 Zhang, X., Muneer, T., 2000. Mathematical model for the performance of light pipes. *Light. Res.*  
724 *Technol.* 32, 141–146. <https://doi.org/10.1177/096032710003200306>

725 Zhang, X., Muneer, T., Kubie, J., 2002. A design guide for performance assessment of solar light-pipes.  
726 *Light. Res. Technol.* 34, 149–168. <https://doi.org/10.1191/1365782802li041oa>

727

# List of figures

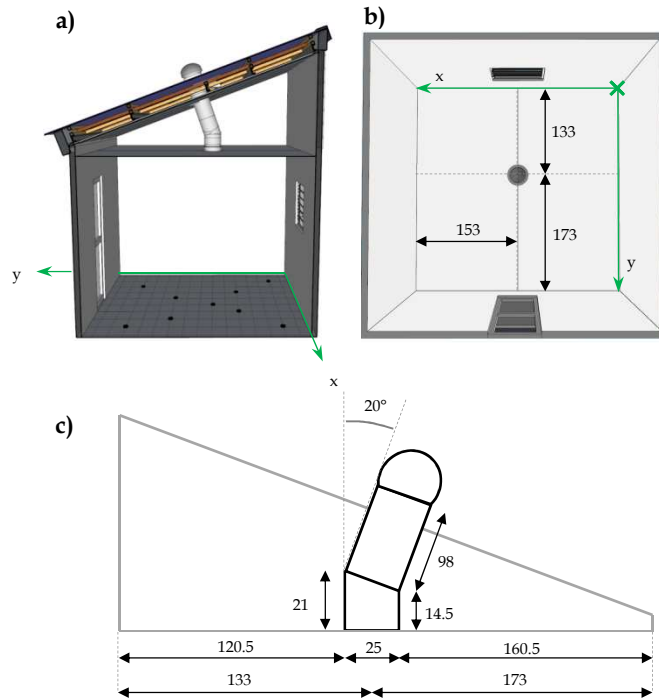


Figure 1: a) Cross-section view of the LGI cell b) Bottom view of the LGI

c) Dimensions of the light pipe

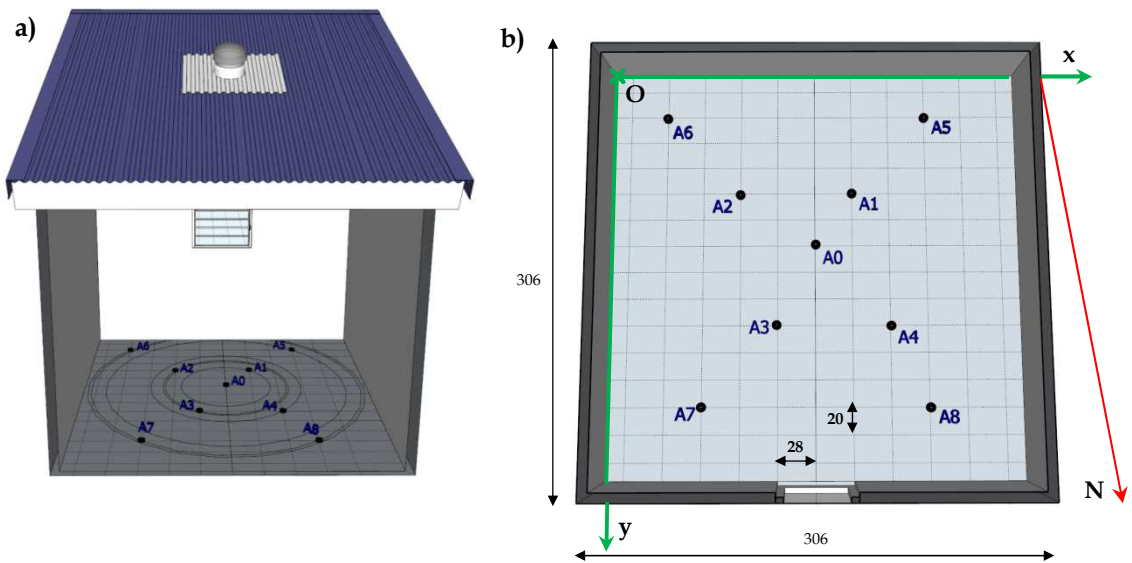


Figure 2: Position of indoor luxmeters



Figure 3: Outdoor luxmeters for global and diffuse illuminance

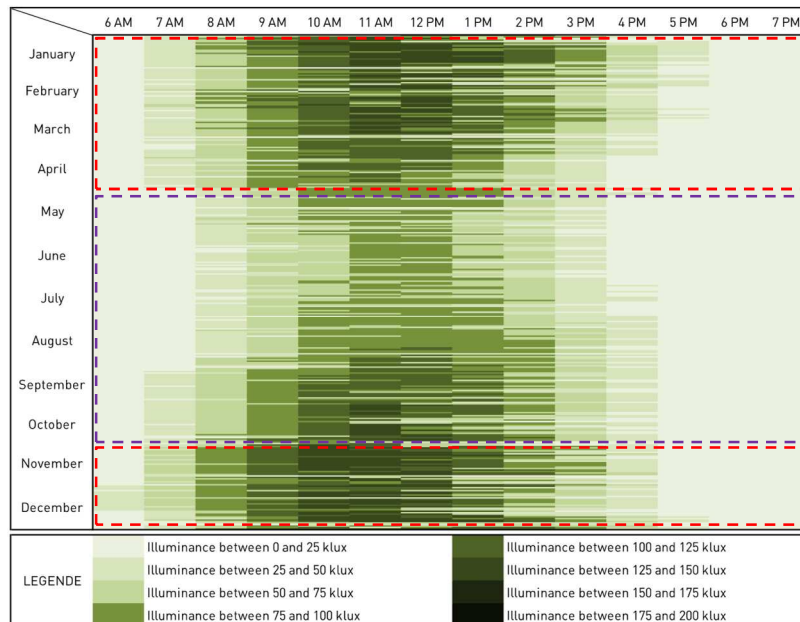


Figure 4: Hourly distribution of the global outdoor illuminance of the city of Saint-Pierre (Reunion) during the year 2014



Figure 5: Experimental cell with black inner walls

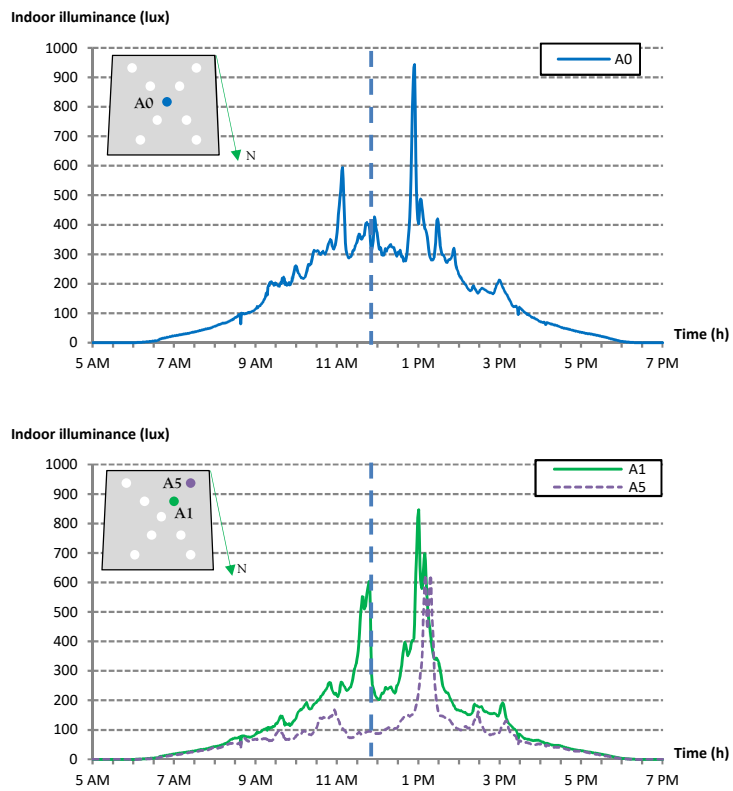


Figure 6: Hourly evolution of indoor illuminance for a clear day (23 September 2014)



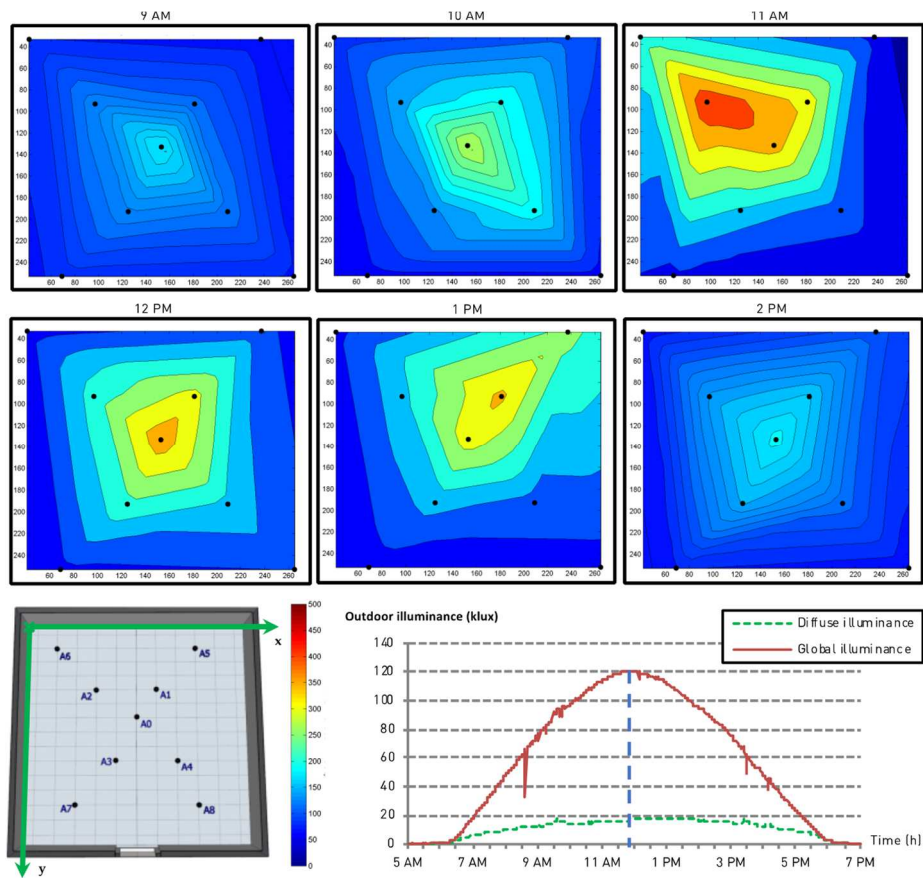


Figure 7: Spatio-temporal distribution of indoor illuminance within the clear sky room (September 23, 2014)

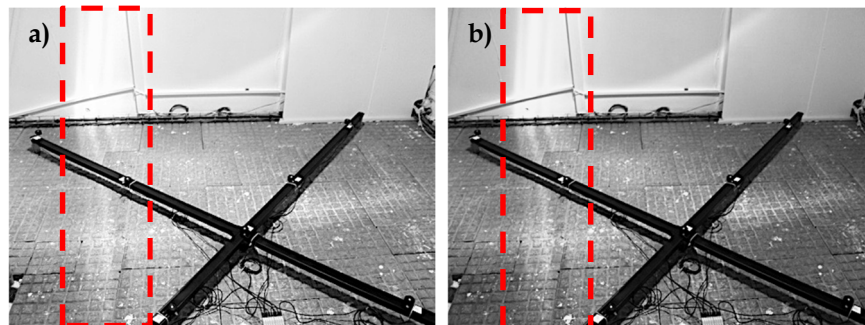


Figure 8: a) Solar spot with the diffuser b) Solar spot without the diffuser

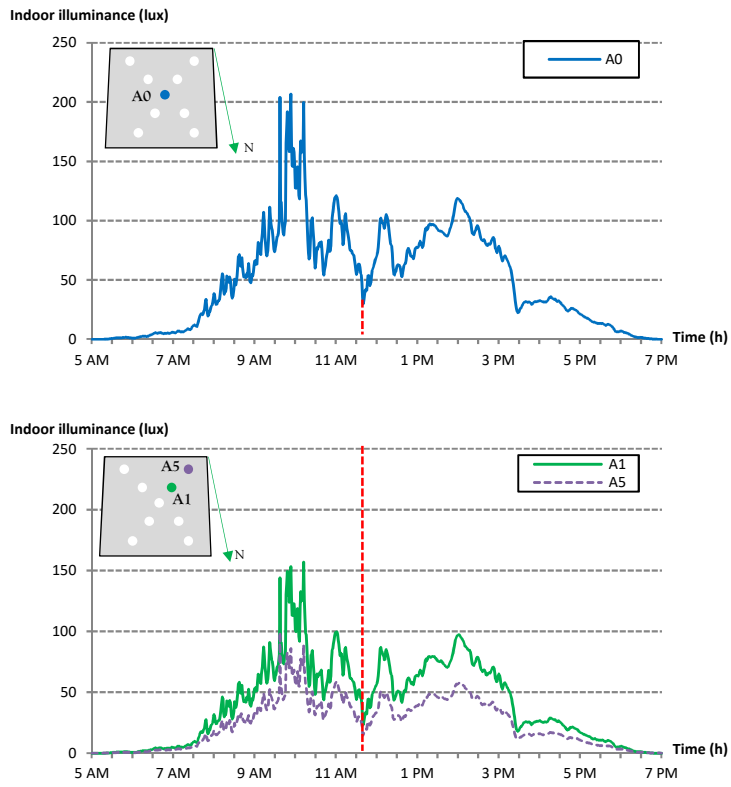


Figure 9 : Hourly evolution of indoor illuminance for an overcast day (November 30, 2014)

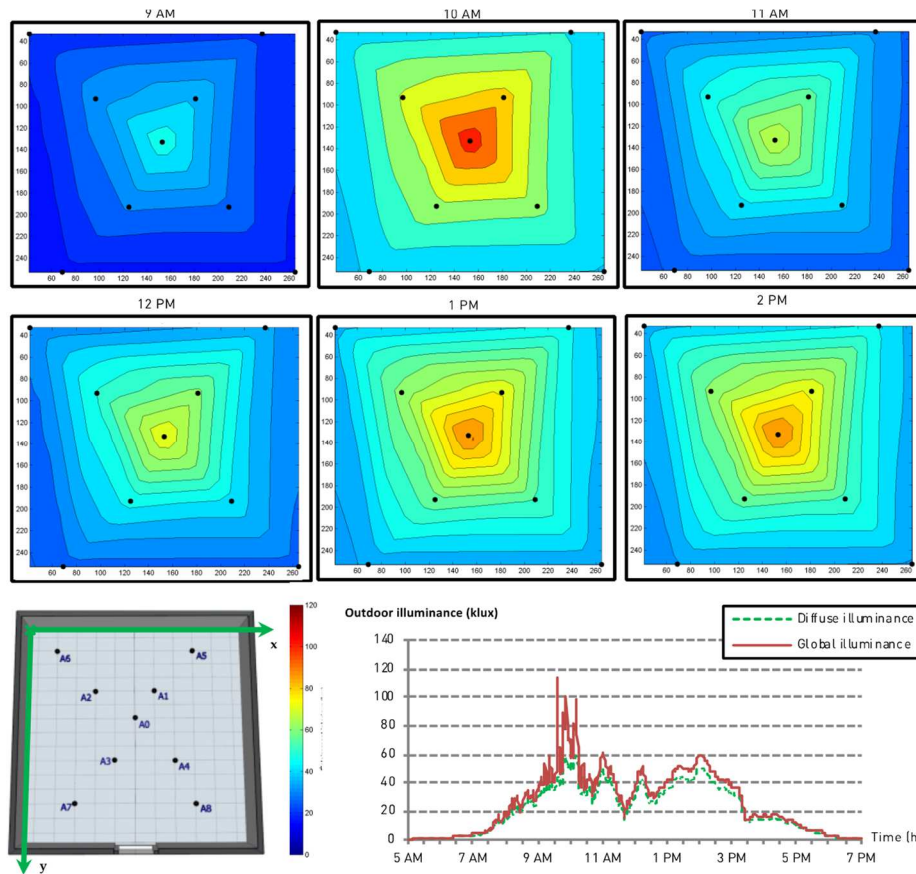


Figure 10 : Spatio-temporal distribution of indoor illuminance within the overcast sky room  
(November 30, 2014)

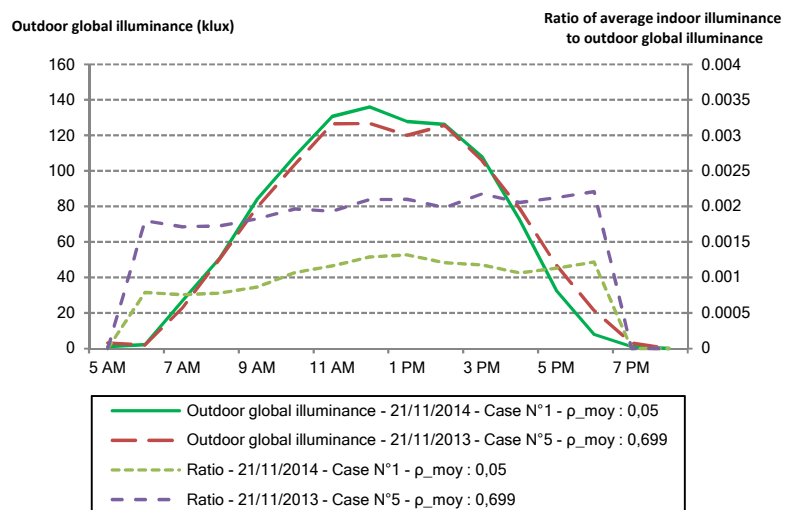


Figure 11 : Evolution of outdoor global illuminances and average hourly indoor illuminance ratio for study cases 1 and 5 for the day of 11/21/2013 and 11/21/2014

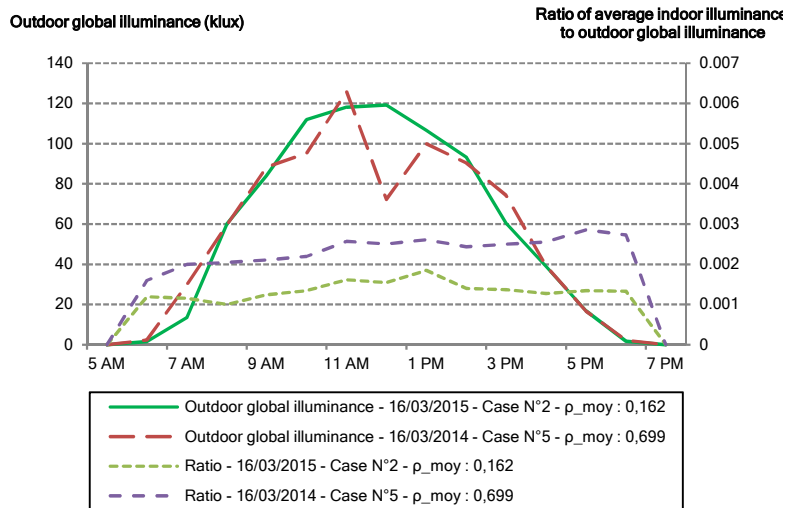


Figure 12 : Evolution of outdoor global illuminances and average hourly indoor illuminance ratio of study cases 2 and 5 for the day of 16/03/2014 and 16/03/2015

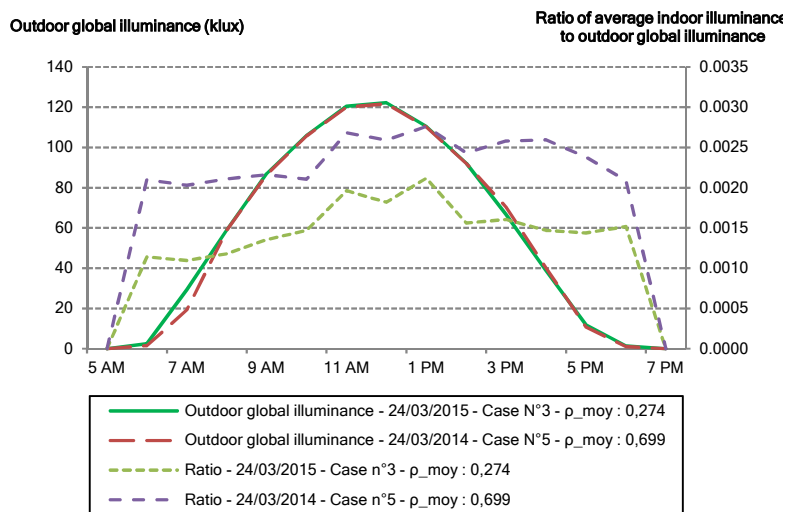


Figure 13 : Evolution of outdoor global illuminances and average hourly indoor lighting ratio for study cases N°3 and 5 for the day of 24/03/2014 and 24/03/2015

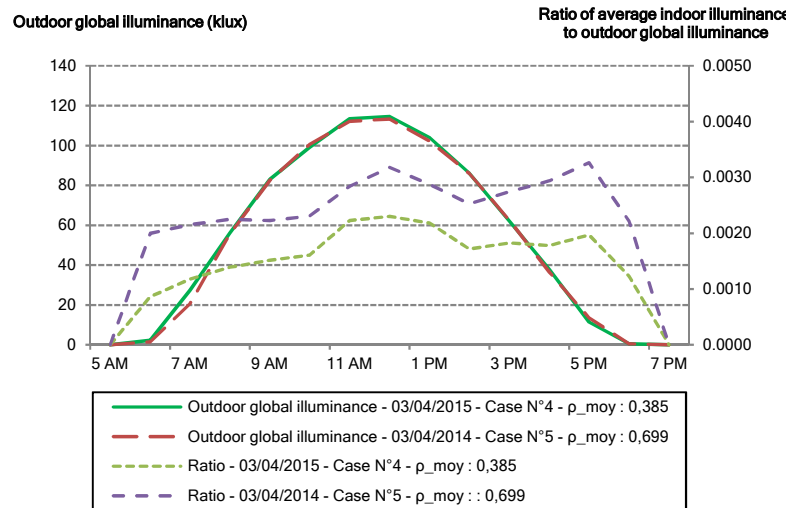


Figure 14 : Evolution of outdoor global illuminances and average hourly indoor illuminance ratio of study cases N°4 and 5 for the day of 03/04/2014 and 03/04/2015

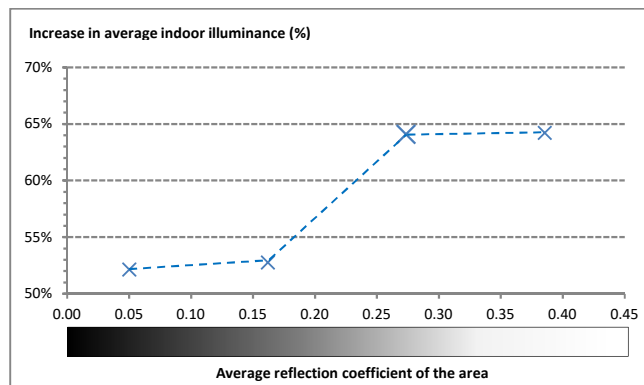


Figure 15 : Evolution of the amount of indoor illuminance as a function of the average reflection coefficient of the area

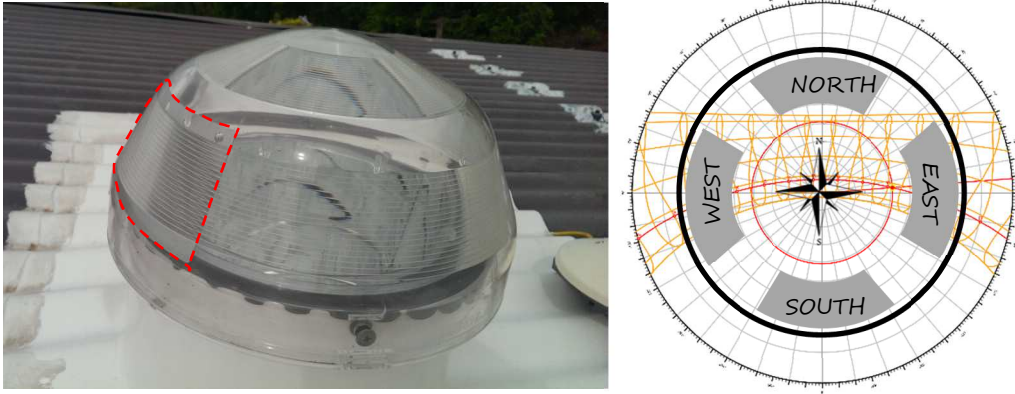


Figure 16 : Deflector in the light pipe collector with solar-path of Saint-Pierre (Reunion)

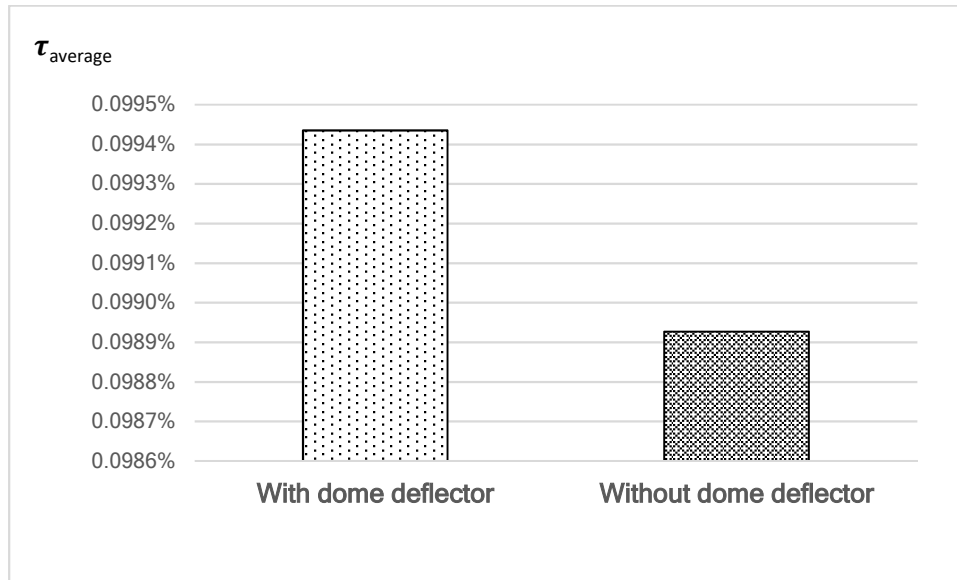


Figure 17 : Impact of dome deflector in the South on ratio between indoor and outdoor average illuminance for a clear sky day

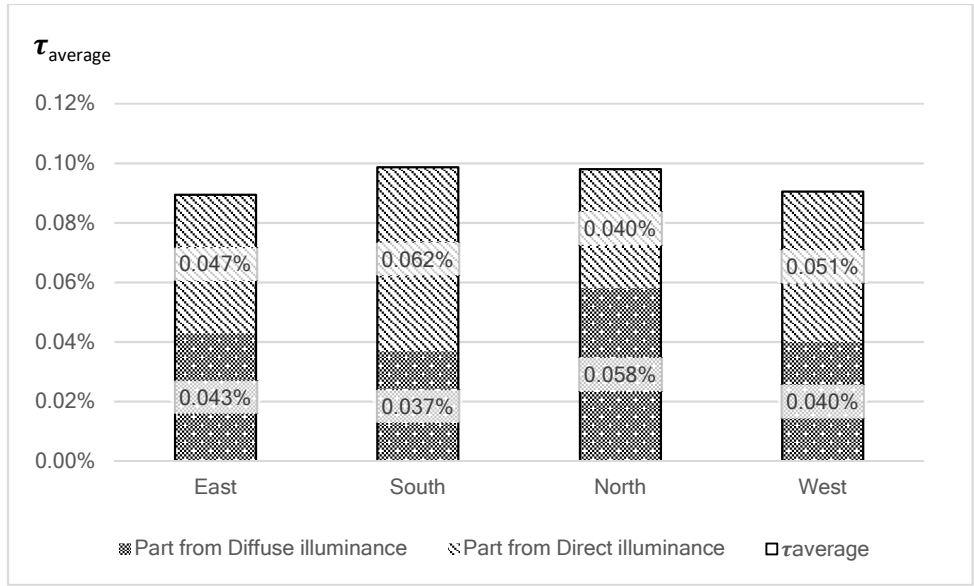


Figure 18: Evolution of the overall ratio between average indoor illuminance and average outdoor global illuminance during the measure period's



Figure 19 : Anticyclonic sub-dome

# List of tables

**Table 1 : synthesis of numerical and experimental studies from 1990 to 2019**

Overall efficiency of the light pipes and energy-saving potential	Parameters related to the environment of the light pipe	Parameters related to the light pipe	Parameters related to the illuminated area: colors and dimensions
<p>(Ji et al., 2016; Li et al., 2010; Oakley et al., 2000; Samuhatananon et al., 2011; Shao et al., 1997; Su et al., 2012; Thakkar, 2013; Wu and Li, 2012)</p>	<p>Impact of outdoor illuminance level and seasonality (Callow, 2003; Kocifaj et al., 2012; Li et al., 2010; Vasilakopoulou et al., 2017)</p>	<p>Impact of the position and orientation of the collector and its shape (Kocifaj et al., 2012; Sharma et al., 2018; Wu et al., 2008; Zhang et al., 2002)</p>	<p>Influence of the color of the area to be illuminated (Chella et al., 2006; Shao et al., 1997; Zhang, 2002)</p>
	<p>Decomposition of direct and diffuse illuminance (Lo Verso et al., 2011; Mohelnikova, 2009; Oh et al., 2013)</p>	<p>Impact of a deflector/reflector in the collector (Azad and Rakshit, 2018)</p>	<p>Effect of the Euclidean distance D and the vertical height of the diffuser H (Zhang et al., 2002)</p>
	<p>Impact of solar altitude, sky brightness index and angle of incidence of incoming beam (Carter, 2002; Darula et al., 2010a; Edmonds, 2010; Garcia Hansen et al., 2009; Swift, 2010; Tsang et al., 2018; Vasilakopoulou et al., 2017; Wu et al., 2008; Zhang et al., 2002; Zhang and Muneer, 2000)</p>	<p>Link between the light spectrum and the colors of the transmitted light (Nilsson et al., 2014)</p>	
	<p>Impact of condensation and dust (Wu et al., 2012)</p>	<p>Impact of optical and geometric parameters of the light pipe (Ellis et al., 2004; Maňková et al., 2009; Shao et al., 1998; Zhang et al., 2002)</p>	
		<p>Impact of elbows of the light pipe (Carter, 2002; Darula et al., 2010b; Gupta et al., 2001; Jenkins et al., 2005; Jenkins and Muneer, 2004; Su et al., 2012; Zhang, 2002)</p>	
<p>Impact of the shape of the diffuser and type of diffusing surface (Baroncini et al., 2010; Kennedy and O'Rourke, 2015; Wu et al., 2008; Zhang et al., 2002)</p>			
<p>Impact on thermal comfort conditions (Williams and Dorville, 2014)</p>			



**Table 2: Experimental scenarios and associated average reflection coefficient  $\rho_{moy}$**

			<i>Contribution of the paper</i>						
			Section 3.2 Impact of sky type on light distribution	Section 3.3 Impact of the color of the illuminated area	Section 3.4 Impact of the position of a dome deflector				Section 3.5 Impact of the anticyclonic sub-dome
					North	South	West	East	
Color of the area to be illuminated	6 black walls	$\rho_{moy} = 0.050$	1	1	6	7	8	9	10
	5 black walls 1 white wall	$\rho_{moy} = 0.162$		2					
	4 black walls 2 white walls	$\rho_{moy} = 0.274$		3					
	3 black walls 3 white walls	$\rho_{moy} = 0.385$		4					
	1 grey wall 5 white walls	$\rho_{moy} = 0.699$		5					

**Table 3: Results on experimental studies about anticyclonic sub-dome impact**

		Black walls + With anticyclonic dome				
		02/25/2015 $I_{glo} = 135\ 386\ \text{lux}$ $\tau_{TDGS} = 0.1076\ \%$	02/26/2015 $I_{glo} = 134\ 405\ \text{lux}$ $\tau_{TDGS} = 0.1069\ \%$	02/28/2015 $I_{glo} = 135\ 016\ \text{lux}$ $\tau_{TDGS} = 0.1085\ \%$	02/29/2015 $I_{glo} = 134\ 523\ \text{lux}$ $\tau_{TDGS} = 0.1085\ \%$	02/30/2014 $I_{glo} = 131\ 975\ \text{lux}$ $\tau_{TDGS} = 0.1084\ \%$
Black walls + Without anticyclonic dome	12/06/2014 $I_{glo} = 135\ 684\ \text{lux}$ $\tau_{TDGS} = 0.0957\ \%$	11.09%	10.59%	11.82%	11.92%	11.79%
	12/09/2014 $I_{glo} = 139\ 051\ \text{lux}$ $\tau_{TDGS} = 0.1003\ \%$	6.79%	6.27%	7.55%	7.65%	7.52%
	12/11/2014 $I_{glo} = 123\ 669\ \text{lux}$ $\tau_{TDGS} = 0.0972\ \%$	9.65%	9.15%	10.39%	10.49%	10.36%
	12/13/2014 $I_{glo} = 137\ 112\ \text{lux}$ $\tau_{TDGS} = 0.0973\ \%$	9.58%	9.07%	10.32%	10.42%	10.29%
	12/16/2014 $I_{glo} = 136\ 781\ \text{lux}$ $\tau_{TDGS} = 0.1001\ \%$	6.97%	6.45%	7.73%	7.83%	7.70%